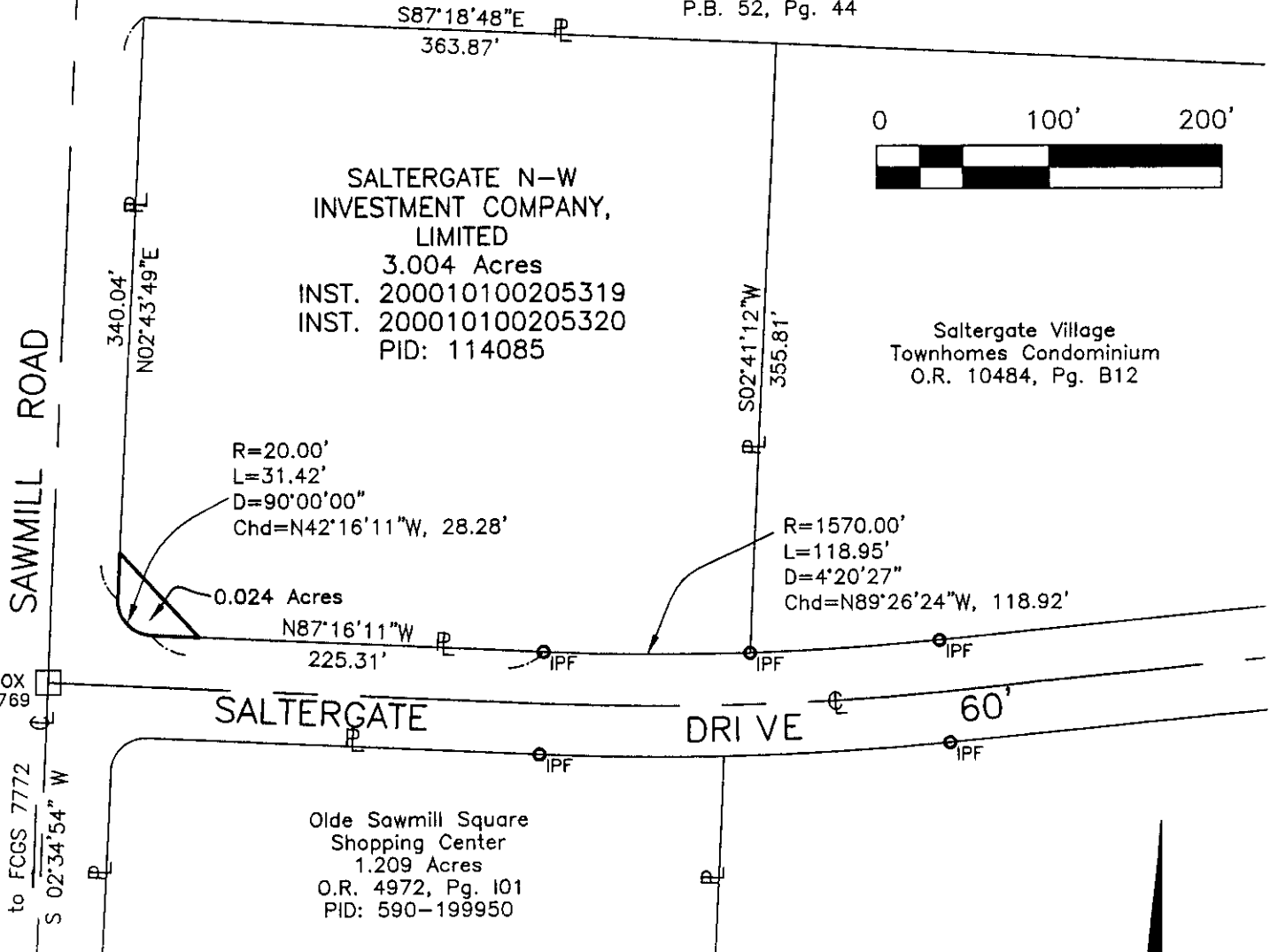


City of Columbus

Sec 1, T 2, R 19, U.S.M.L., Franklin County, Ohio

Sawmill Forest
P.B. 52, Pg. 44

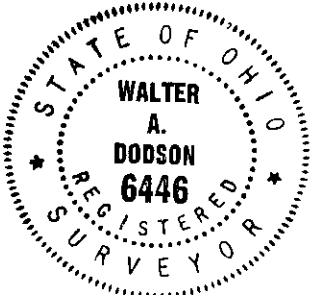


- Pertinent Documents:**
- 1 Plat of "Olde Sawmill Phase One", P.B. 48, Pg. 14.
 - 2 Plat of "Olde Sawmill Section Eight", P.B. 59, Pg. 39.
 - 3 other plats and documents as listed

- LEGEND**
- Monument Found
 - PK PK Nail Set
 - 5/8" x 30" rebar set with plastic I.D. cap: "DODSON 6446"
 - () parenthesis indicates record dimension if different than measured.

I do hereby certify that this plat was based upon an actual survey of the premises in May, 2004, using closed loop traverse with a mathematical closure greater than 1:20000. Bearings listed are based the line between Franklin County Monuments numbered 7772 and 7769 equal to: N 02-34-54 E.

Walter A. Dodson 5/19/04
Walter Allen Dodson PS 6446, Ohio



Burgess & Niple 6085 Reed Road, Columbus, Ohio 43220 (614) 459-2050	
Survey for CITY OF COLUMBUS	
Survey of 0.024 acres from Saltergate N-W Investment Company, LTD., Columbus, Ohio	
W.A.D.	5/17/04
Scale: 1" = 100'	33861