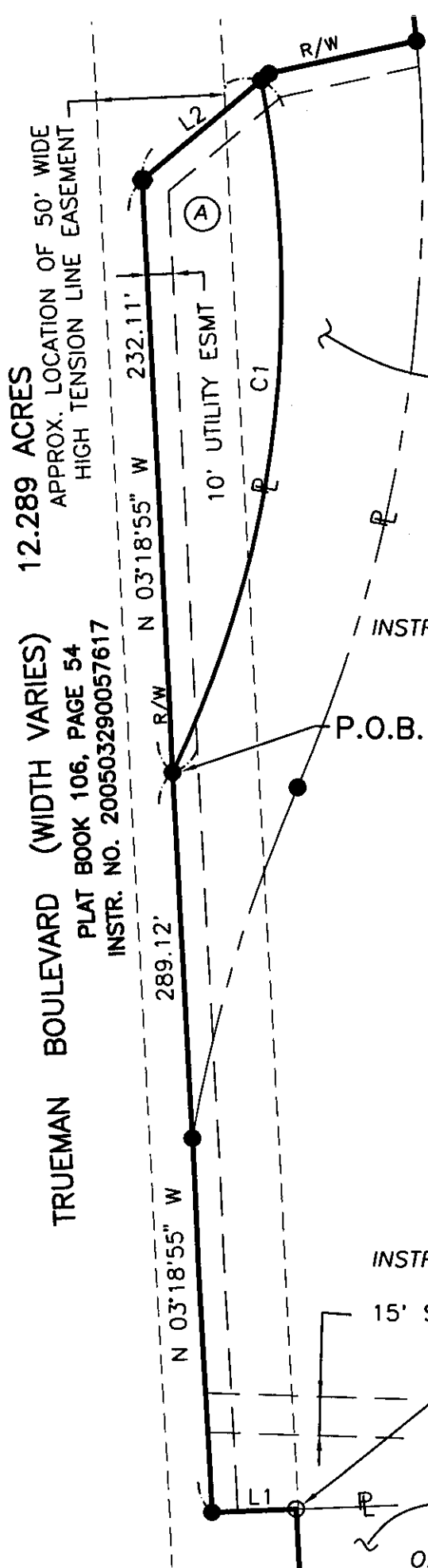
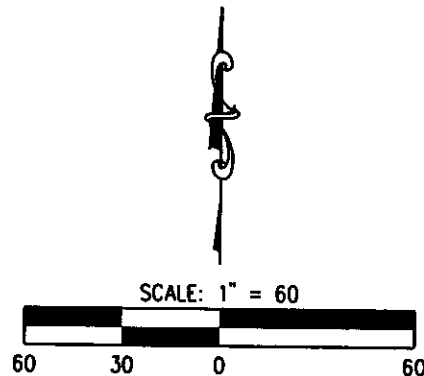


LOT SPLIT
FOR
REALTY FACILITY HOLDINGS XIV, LLC
0.220 ACRE TRACT, OUT OF A 7.328 ACRE TRACT
DEEDED TO RRIHQ LLC AS RECORDED IN
INSTRUMENT NUMBER 200305190148625
CITY OF HILLIARD
COUNTY OF FRANKLIN
STATE OF OHIO
V.M.S. # 3000



SOMA COMPANY
050-003043
O.R. 00268, PG. D19
O.R. 00268, PG. E03
O.R. 24776, PG. B20



(A)
0.220 ACRES LOT SPLIT
OUT OF
RRIHQ LLC
050-008787
INSTR. NO. 200305190148625

050-009208
REALTY FACILITY
HOLDINGS XIV, LLC
INSTR. NO. 200102280040150

LINE TABLE			
L1	S	87°07'43" W	32.71'
L2	N	48°21'52" E	60.54'

CURVE TABLE					
CURVE	RADIUS	LENGTH	DELTA	CHORD	BEARING
C1	435.00'	278.53'	36°41'13"	273.80'	S 06°40'29" W

RECEIVED

APR 11 2005

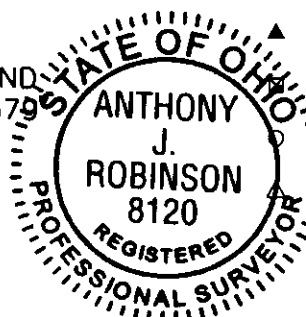
Franklin County Engineer
Dean C. Ringle, P.E., P.S.

050-009208
REALTY FACILITY
HOLDINGS XIV, LLC
INSTR. NO. 200102280040150

LEGEND

- 5/8"x30" REBAR SET W/
YELLOW I.D. CAP MARKED
"BRH GROUP"
- 1" REBAR SET
- ▲ RAILROAD SPIKE SET
- MONUMENT FOUND
- FOUND, AS LABELED
- RAILROAD SPIKE FOUND

15' STM ESMT
P.O.C.
1" IRON PIN FOUND
W/ CAP "P.S. 6379"
050-004002
WILBUR R. &
PHYLLIS A. ERNST
O.R. 007250, PG. C16



- PLAN PREPARED BY -

BRH Group, Inc.

705-F Lakeview Plaza Boulevard
Worthington, Ohio 43085-4779
Phone: (614) 841-9500
Fax: (614) 841-0170

JOB NO.
20077

THIS PLAT WAS PREPARED BY BRH GROUP, INC., AND IS A TRUE AND ACCURATE REPRESENTATION, TO THE BEST OF MY KNOWLEDGE AND BELIEF, OF A SURVEY MADE BY SAME IN JULY 2004.

ANTHONY J. ROBINSON, P.S. No. 8120

DATE

4/8/2005

SHEET

1

OF 1