

EXHIBIT A

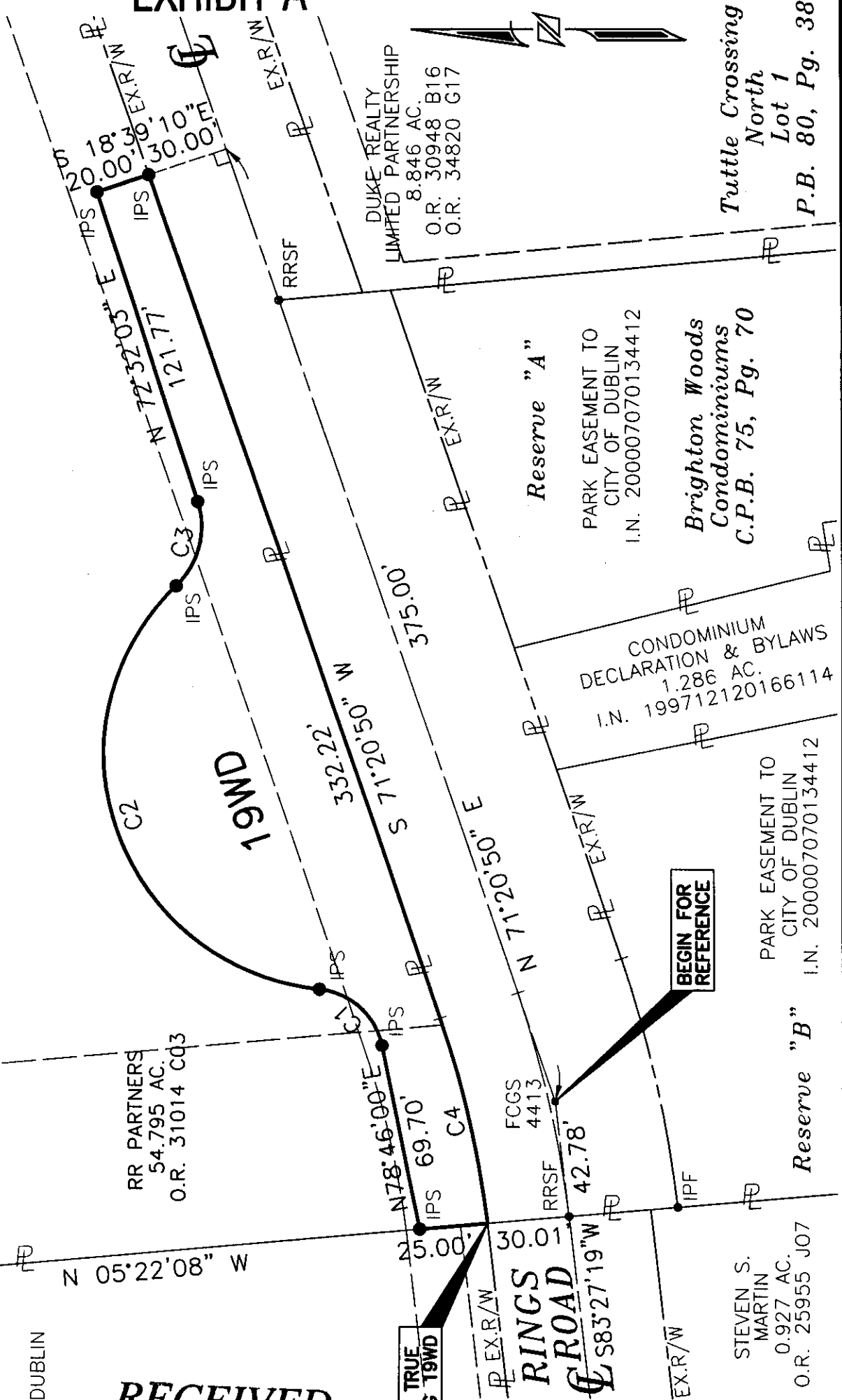
PARCEL 19WD
0.413 AC. (NET)
0.000 AC. (P.R.O.)
0.413 AC. (TOTAL)

CURVE #4
 $\Delta = 12^{\circ}00'49''$
 $R = 373.41'$
 $T = 39.29'$
 $L = 78.30'$
 $Bg = S77^{\circ}21'15''W$
 $Ch = 78.15'$

CURVE #3
 $\Delta = 63^{\circ}27'43''$
 $R = 31.00'$
 $T = 19.17'$
 $L = 34.34'$
 $Bg = S75^{\circ}44'06''E$
 $Ch = 32.61'$

CURVE #2
 $\Delta = 130^{\circ}27'11''$
 $R = 87.50'$
 $T = 189.60'$
 $L = 199.22'$
 $Bg = N70^{\circ}46'10''E$
 $Ch = 158.89'$

CURVE #1
 $\Delta = 73^{\circ}13'25''$
 $R = 26.00'$
 $T = 19.32'$
 $L = 33.23'$
 $Bg = N42^{\circ}09'17''E$
 $Ch = 31.01'$



Trinity Park
 Section No. 1
 P.B. 79, Pg. 85
 Reserve "A"

CITY OF DUBLIN

RECEIVED

APR 14 2005

Franklin County Engineer
 Dean C. Ringle, P.E., P.S.

POINT OF TRUE
 BEGINNING 19WD

**EXHIBIT OF PARCEL 19WD
 RINGS ROAD**

City of Dublin, Franklin County, Ohio
 Virginia Military Survey 3011

SCALE: 1" = 50' DATE: FEB., 2001

LEGEND
 ○ = EXISTING IRON PIN
 ● = IRON PIN SET
 □ = EXISTING MONUMENT

BASIS OF BEARINGS
 THE BEARING DATA ARE BASED UPON THE CENTERLINE OF RINGS ROAD AS BEING NORTH 83°27'19" EAST, FROM AN ADJUSTED CLOSED TRAVERSE BETWEEN FRANKLIN COUNTY MONUMENTS FCGS 4412 AND FCGS 4413.



R.D. Zande & Associates, Inc.
 1297 Dublin Road
 Columbus, Ohio 43215
 Phone: (614) 486-4383

Tim Baker 4-13-05
 Registered Surveyor #7818 Date

Tuttle Crossing
 North
 Lot 1
 P.B. 80, Pg. 38

Reserve "A"
 PARK EASEMENT TO
 CITY OF DUBLIN
 I.N. 200007070134412
 Brighton Woods
 Condominiums
 C.P.B. 75, Pg. 70

CONDOMINIUM
 DECLARATION & BYLAWS
 1.286 AC.
 I.N. 199712120166114

PARK EASEMENT TO
 CITY OF DUBLIN
 I.N. 200007070134412

Reserve "B"

STEVEN S.
 MARTIN
 0.927 AC.
 O.R. 25955 J07

FCGS
 4413

RR PARTNERS
 54.795 AC.
 O.R. 31014 C03

DUKE REALTY
 LIMITED PARTNERSHIP
 8.846 AC.
 O.R. 30948 B16
 O.R. 34820 G17