



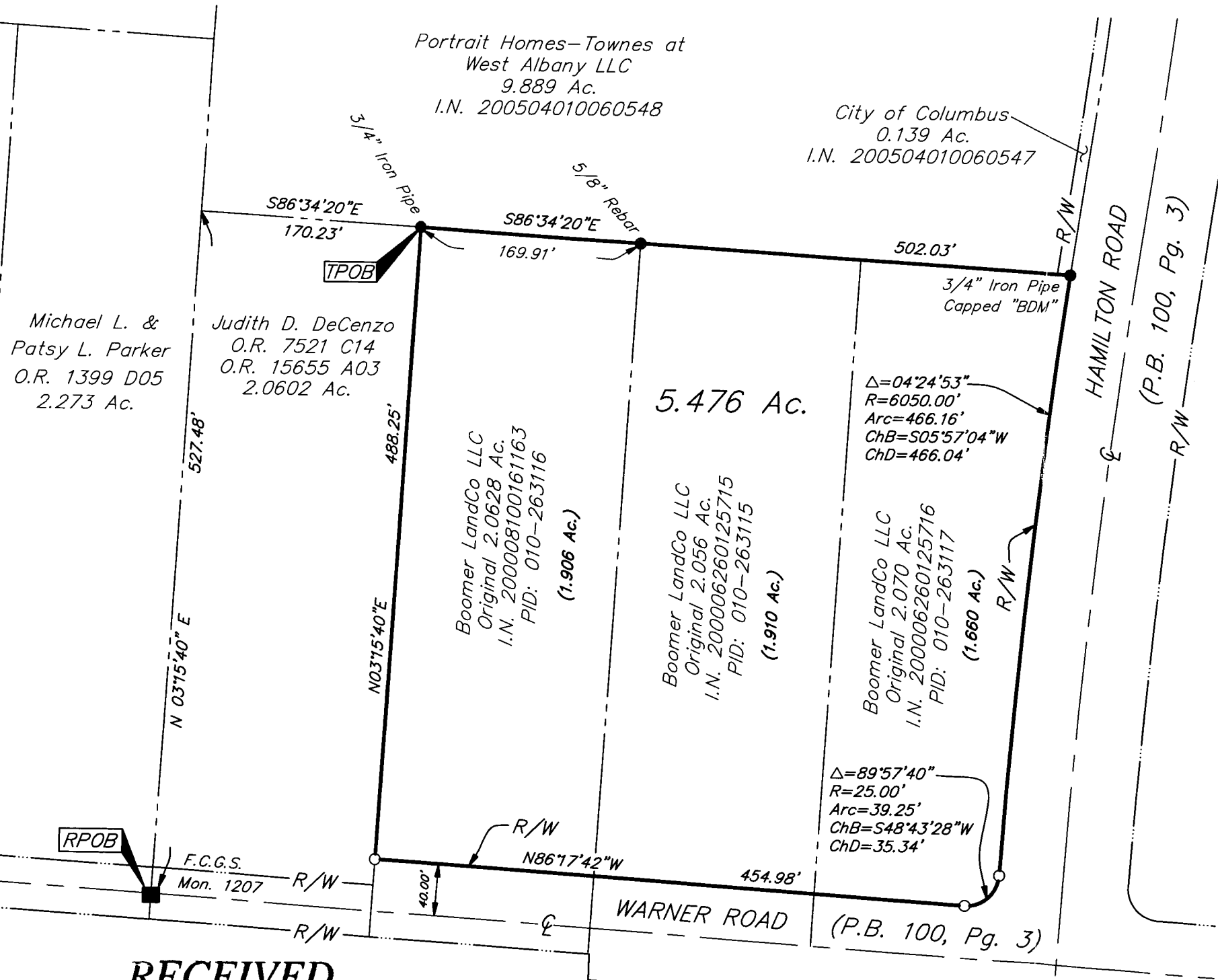
EVANS, MECHWART, HAMBLETON & TILTON, INC.
170 MILL STREET, GAHANNA, OHIO 43230
TELEPHONE (614) 471-5150 - FACSIMILE (614) 471-9286

SURVEY OF ACREAGE PARCEL
SECTION 15, QUARTER TOWNSHIP 2, TOWNSHIP 2, RANGE 16
UNITED STATES MILITARY LANDS
CITY OF COLUMBUS, FRANKLIN COUNTY, OHIO

Date: August 24, 2005

Scale: 1" = 100'

Job No: 2005-1836



- = STONE FND.
 - = MON. FND.
 - = I.P. FND.
 - = I.P. SET
 - = MAG. NAIL FND.
 - = MAG. NAIL SET
 - ▲ = R.R. SPK. FND.
 - △ = R.R. SPK. SET
 - ◆ = P.K. NAIL FND.
- I.P. Set are 13/16" I.D. iron pipe with cap inscribed EMHT INC

BASIS OF BEARINGS:
Bearings are based on the Ohio State Coordinate System, NAD83 (1986 adjustment). Control for bearings was derived, using Global Positioning System procedures and equipment, from coordinates for FCGS monuments 8824 & 8825, having a bearing of North 86° 29' 28" West, as established by the Franklin County Engineering Department.

RECEIVED
AUG 26 2005
Franklin County Engineer
Dean C. Ringle, PE., PS.



GRAPHIC SCALE (IN FEET)



By *Heather L. King* 8/26/05
Professional Surveyor No. 8307

PLOTTED BY: TMEBB [8/26/2005 10:17:48 AM] - LAST SAVED BY: TMEBB [8/26/2005 10:17:48 AM] - NO XREFS -