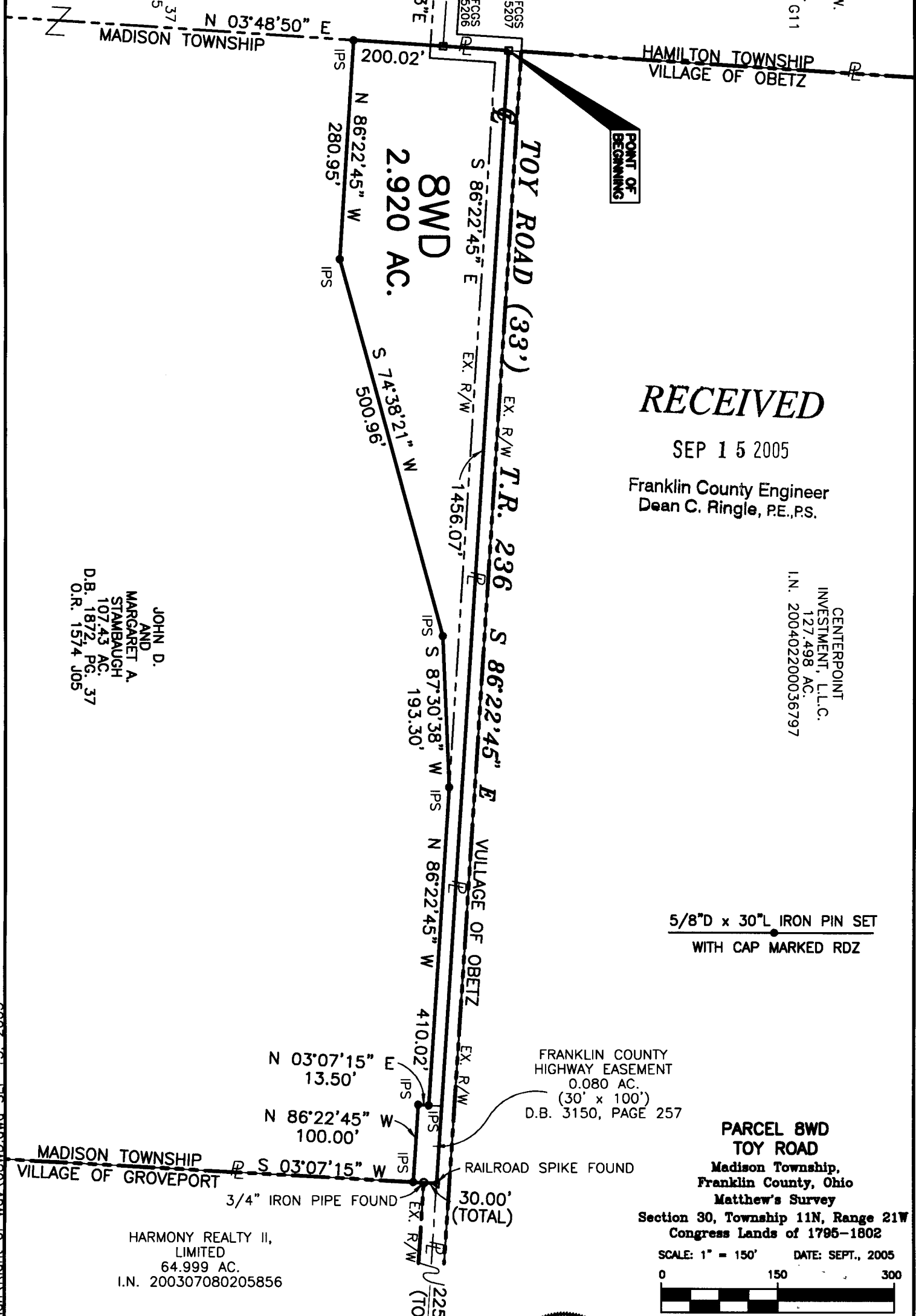
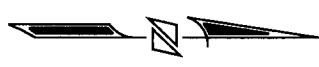


**EXHIBIT B**

RODNEY W. HARRIS  
5.00 AC.  
O.R. 27238 G11

JOHN D. AND MARGARET A. STAMBAUGH  
56.993 AC.  
D.B. 1872, PG. 37  
O.R. 1574 J05



**RECEIVED**

SEP 15 2005

Franklin County Engineer  
Dean C. Ringle, P.E., P.S.

CENTERPOINT INVESTMENT, L.L.C.  
127.498 AC.  
I.N. 200402200036797

JOHN D. AND MARGARET A. STAMBAUGH  
107.43 AC.  
D.B. 1872, PG. 37  
O.R. 1574 J05

5/8" D x 30" L IRON PIN SET  
WITH CAP MARKED RDZ

FRANKLIN COUNTY HIGHWAY EASEMENT  
0.080 AC.  
(30' x 100')  
D.B. 3150, PAGE 257

**PARCEL 8WD  
TOY ROAD**  
Madison Township,  
Franklin County, Ohio  
Matthew's Survey

Section 30, Township 11N, Range 21W  
Congress Lands of 1795-1802

SCALE: 1" = 150' DATE: SEPT., 2005



Prepared By

**R.D. Sande & Associates, Inc.**  
1500 Lake Shore Drive  
Suite 100  
Columbus, Ohio 43204  
Phone: (614) 486-4383



*Tim Baker* 9-15-05  
Registered Surveyor #7818 Date

**BASIS OF BEARINGS**  
THE BEARING DATUM IS BASED ON THE BEARING OF SOUTH 86°22'45" EAST FOR THE CENTERLINE OF TOY ROAD FROM AN ADJUSTED FIELD SURVEY USING G.P.S. METHODS BETWEEN FRANKLIN COUNTY MONUMENTS #5207, AND #5208, BASED ON THE OHIO STATE PLANE COORDINATE SYSTEM, SOUTH ZONE, NAD 83.

HARMONY REALTY II, LIMITED  
64.999 AC.  
I.N. 200307080205856

2002.P.15. SEP. 15. 2005.dwg\DWG80\Wav\Right of Way\2607.P.15.25X