

EMH&T

Evans, Mechwart, Hambleton & Tilton, Inc.
Engineers • Surveyors • Planners • Scientists
5500 New Albany Road, Columbus, OH 43054
Phone: 614.775.4500 Fax: 614.775.4800

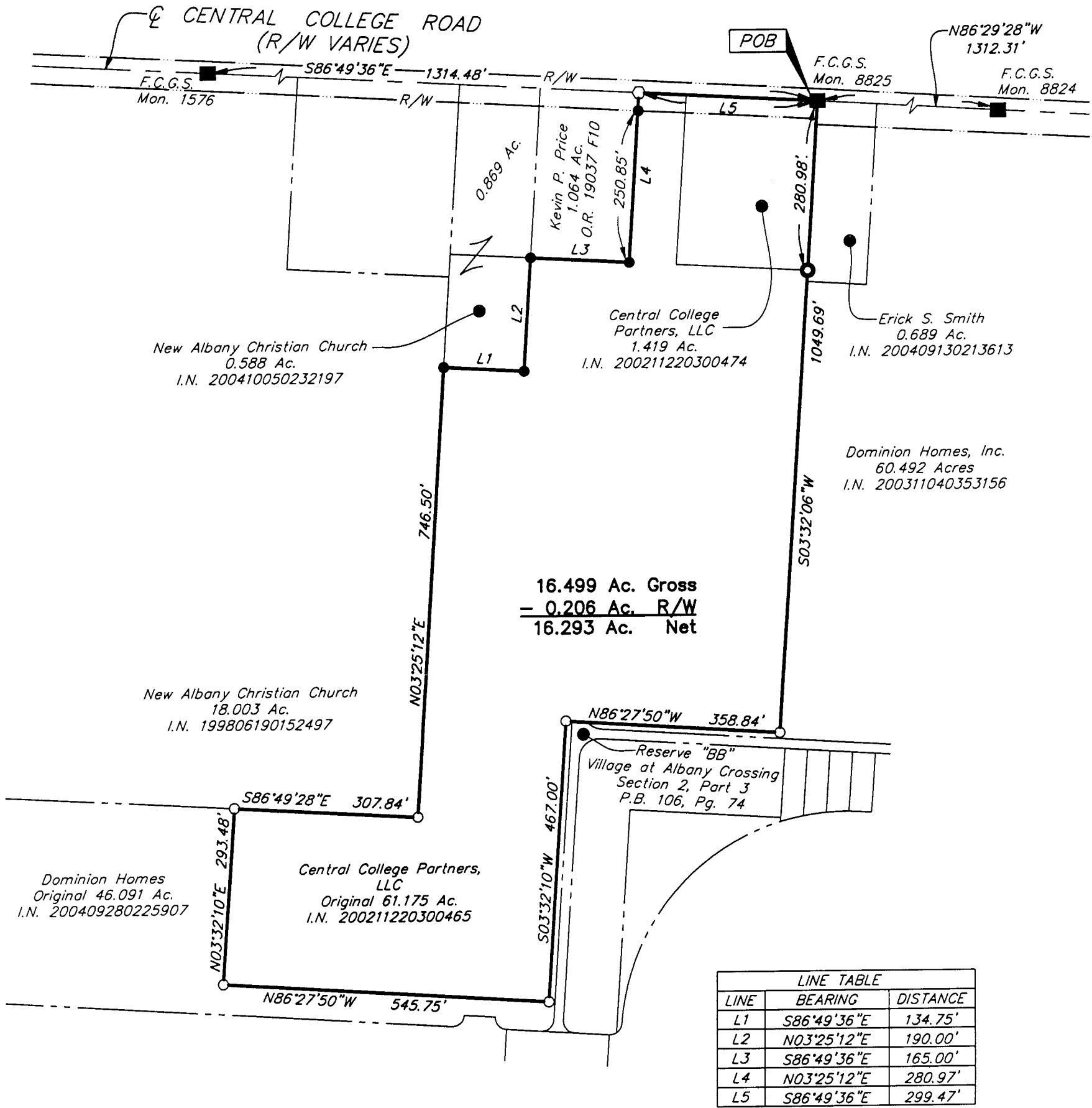
SURVEY OF ACREAGE PARCEL SECTION 15, QUARTER TOWNSHIP 2, TOWNSHIP 2, RANGE 16 UNITED STATES MILITARY LANDS CITY OF COLUMBUS, FRANKLIN COUNTY, OHIO

Date: September 21, 2005

Scale: 1" = 200'

Job No: 2005-1925

M C M X X V

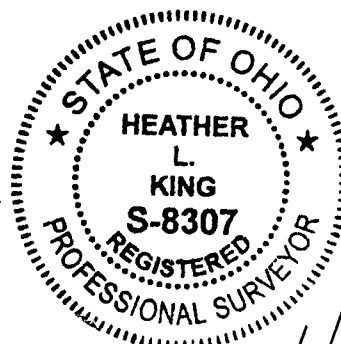


BASIS OF BEARINGS:

Bearings are based on the Ohio State Plane Coordinate System per NAD83. Control for bearings was from coordinates of monuments 8824 & 8825, having a bearing of North 86° 29' 28" West, established by the Franklin County Engineering Department, using Global Positioning System procedures and equipment.

- = 1/2" I.P. FND.
- = MON. FND.
- = 3/4" I.P. FND.
- = I.P. SET
- = MAG. NAIL FND.
- = MAG. NAIL SET
- ▲ = R.R. SPK. FND.
- △ = R.R. SPK. SET
- ◆ = P.K. NAIL FND.

I.P. Set are 13/16" I.D. iron pipe with cap inscribed EMHT INC



By *Heather L. King* 9/21/05
Professional Surveyor No. 8307



GRAPHIC SCALE
(IN FEET)

\\CMHDATA\PROJECT\20051925\DWG\51925BV.DWG-11X17 PLOT BY H KING [9/21/2005 10:51:40 AM] - PLOTTED BY H KING [9/21/2005 10:51:40 AM] - LAST SAVED BY H KING [9/21/2005 10:51:39 AM] - NO XREFS -