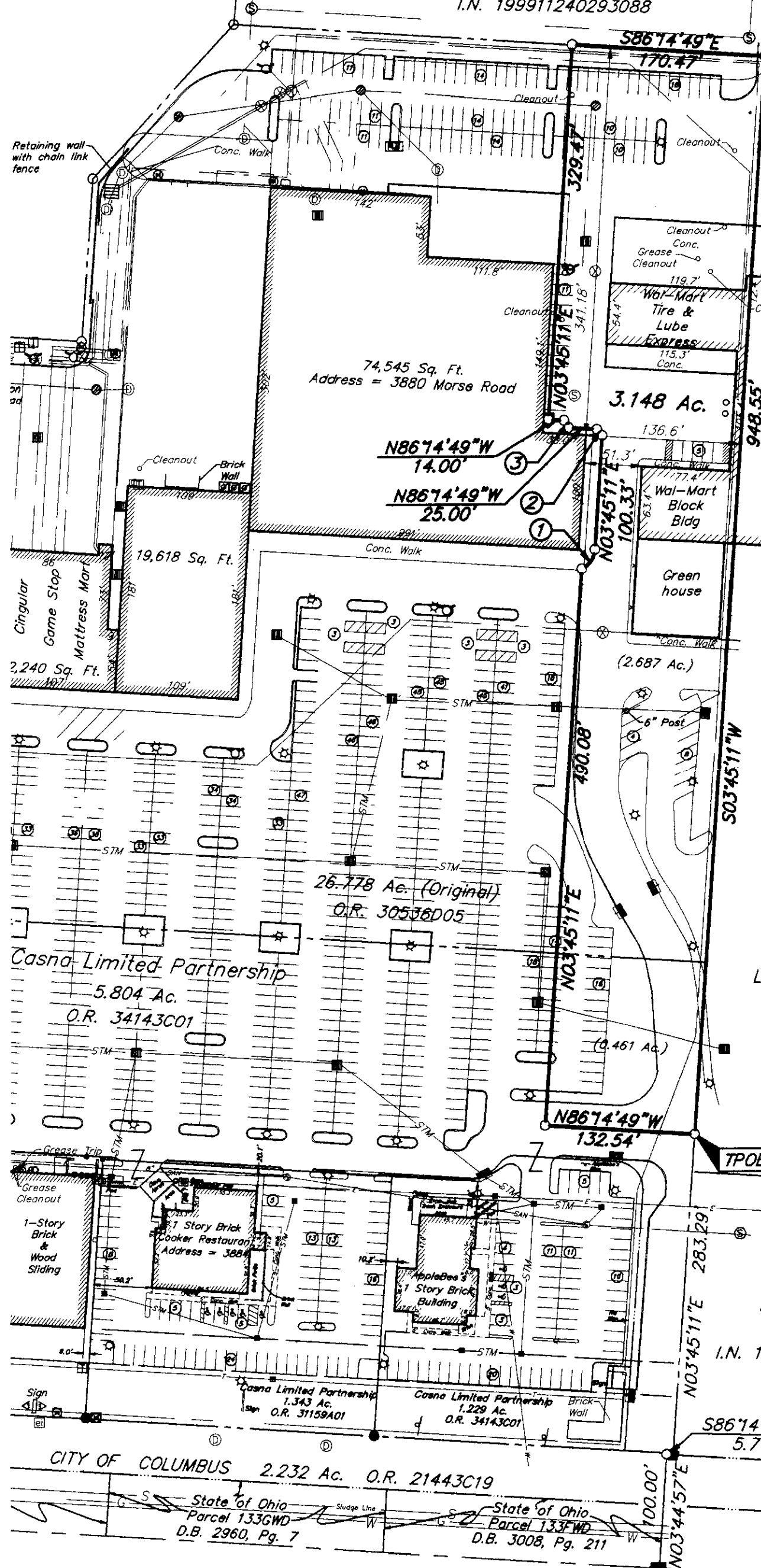


SURVEY OF ACREAGE PARCEL LOCATED IN QUARTER TOWNSHIP 3, TOWNSHIP 2, RANGE 17, UNITED STATES MILITARY LANDS CITY OF COLUMBUS, FRANKLIN COUNTY, OHIO

NOVEMBER 06, 2003

SCALE 1" = 100'

AERC Bradford, Inc.
 15.305 Ac.
 I.N. 199911240293088



- = STONE FND.
 - = MON. FND.
 - = I.P. FND.
 - = I.P. SET
 - = MAG. NAIL FND.
 - = MAG. NAIL SET
 - ▲ = R.R. SPK. FND.
 - △ = R.R. SPK. SET
 - ◆ = P.K. NAIL FND.
- I.P.S Set are 13/16" I.D. Iron pipe W/ cap inscribed EMHT INC

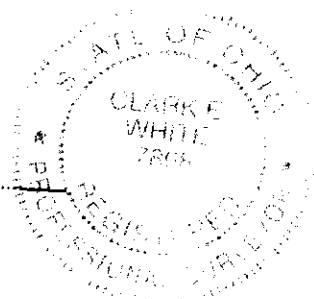
- ① Δ=61°32'28"
R=20.00'
ChB=N34°31'25"E
ChD=20.46'
- ② Δ=90°00'00"
R=5.00'
ChB=N41°14'49"W
ChD=7.07'
- ③ Δ=108°16'28"
R=4.63'
ChB=N32°06'35"W
ChD=7.50'

RECEIVED

DEC 02 2003

Franklin County Engineer
 Dean C. Ringle, PE., PS.

Lee Scott, Managing Trustee
 for Wal-Mart Real Estate
 Business Trust
 15.594 Ac.
 I.N. 200209260240508



By *Clark White* 11/7/03
 Professional Surveyor No. 7868



GRAPHIC SCALE
 (IN FEET)

The bearings shown hereon are based on the same meridian as the centerline of Morse Road west of Stelzer Road which has a bearing of North 86° 14' 49" West as recorded in Official Record 24271G08.