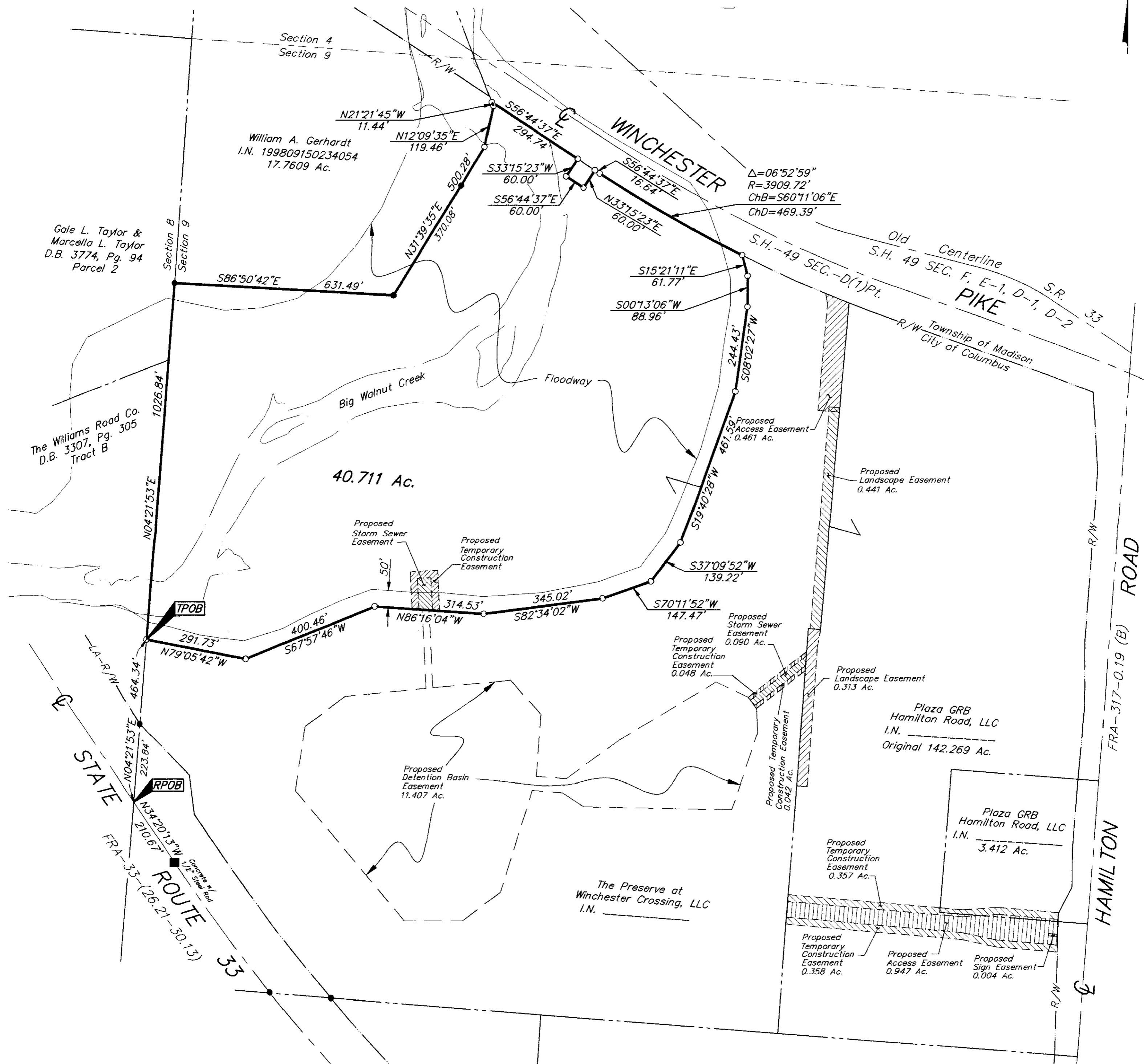


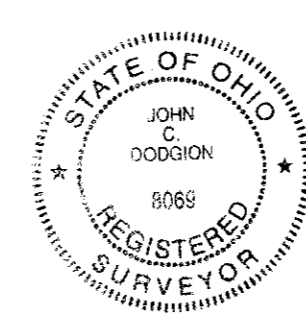
SURVEY OF ACREAGE PARCEL
SECTION 9, TOWNSHIP 11, RANGE 21
CONGRESS LANDS
CITY OF COLUMBUS, FRANKLIN COUNTY, OHIO



- = STONE FND.
 - = MON. FND.
 - = I.P. FND.
 - = I.P. SET
 - = MAG. NAIL FND.
 - = MAG. NAIL SET
 - ▲ = R.R. SPK. FND.
 - △ = R.R. SPK. SET
 - ◆ = P.K. NAIL FND.
- I.P.S. Set are 1 3/16" I.D. Iron pipe w/ cap inscribed EMHT INC

RECEIVED
 JAN 16 2004
 Franklin County Recorder
 Dan Clevenger, Recorder

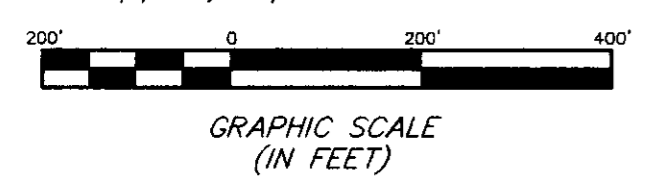
BASIS OF BEARINGS: Bearings are based on N 57° 12' 05" W between monuments FRANK 132 & FRANK 32, per the Ohio State Plane Coordinate System NAD83, South Zone.



Surveyed & Prepared By
EMHT INC.
 ENGINEERS, SURVEYORS, PLANNERS, SCIENTISTS
 EVANS, MECHWART HAMBLETON & TILTON, INC.
 170 MILL STREET, GAHANNA, OHIO 43230-3036
 TEL: 614-471-5150 • FAX: 614-471-9286

SCALE: 1" = 200'
 REVISED
 SEPTEMBER 17, 2003
 JANUARY 16, 2004

By *John C. Dagg*
 Professional Surveyor No. 8069



C:\PROJECT\20031300\DWG\31300BVT.DWG - 0 XREFS - PLOTTED BY JBUSBY - January 16, 2004 - 8:09 AM