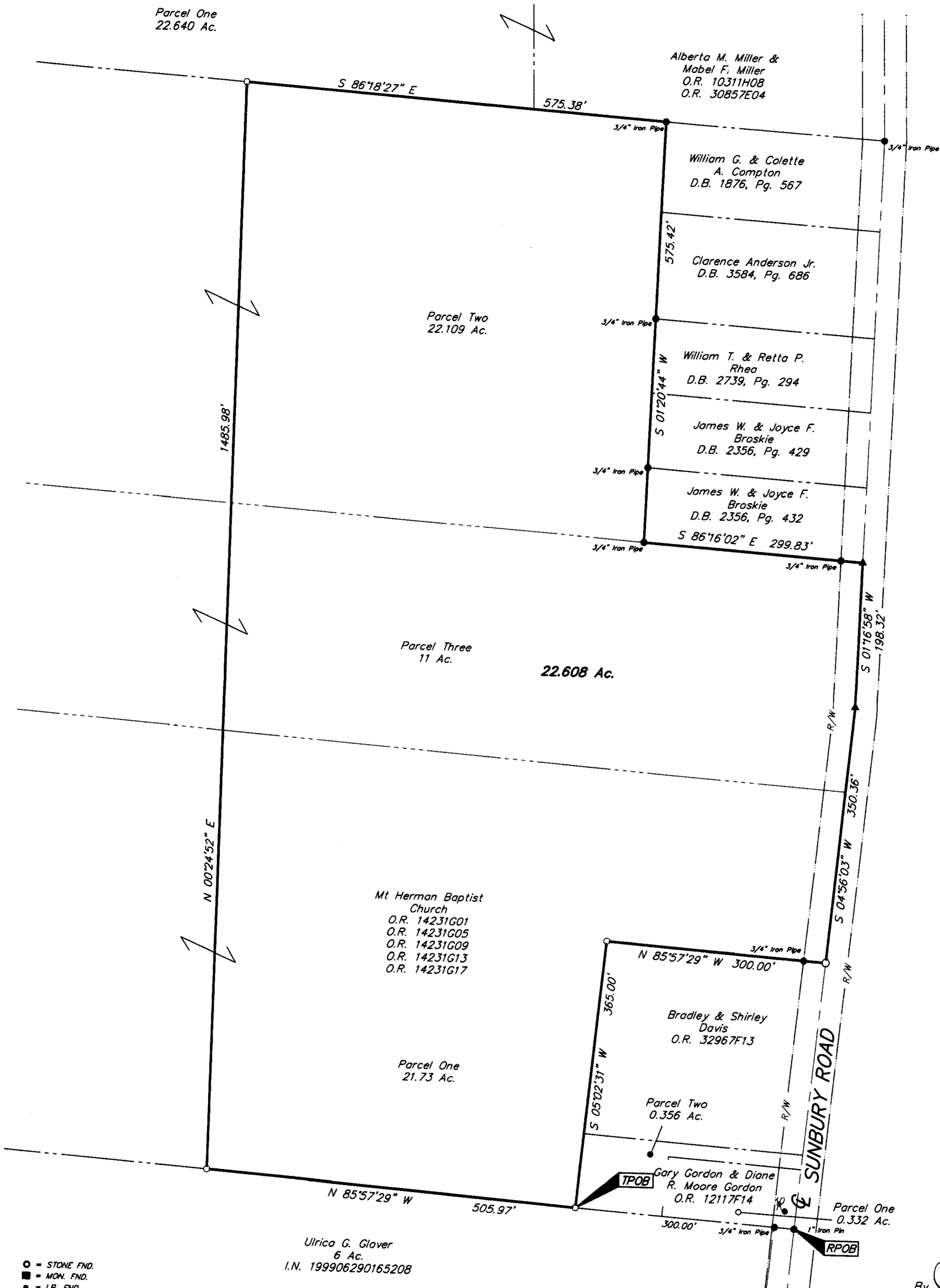


SURVEY OF ACREAGE PARCEL
QUARTER TOWNSHIP 3, TOWNSHIP 1, RANGE 17
UNITED STATES MILITARY LANDS
CITY OF COLUMBUS, FRANKLIN COUNTY, OHIO



RECEIVED

SEP 07 2004

Franklin County Engineer
Dean C. Ringle, PE, PS.



By *James M. Pearsall* 9/2/04
 Professional Surveyor No. 7840

- = STONE FND.
- = MON. FND.
- = I.P. FND.
- = I.P. SET
- = MAG. NAIL FND.
- = MAG. NAIL SET
- ▲ = R.R. SPK. FND.
- △ = R.R. SPK. SET
- = P.K. NAIL FND.

I.P. Set are 13/16" I.D. iron pipe with cap inscribed EMHT INC



GRAPHIC SCALE
(IN FEET)

BASIS OF BEARINGS: The bearings in the above description are based on the Ohio State Plane Coordinate System - South Zone as per NAD83. Control for bearings was from coordinates of monuments Frank 64 and Frank 164, as established by the Franklin County Engineering Department using Global Positioning procedures and equipment.

 ENGINEERS, SURVEYORS, PLANNERS, SCIENTISTS EVANS, MECHWART, HAMBLETON & TILTON, INC. 170 MILL STREET GAHANNA, OHIO 43230 TELEPHONE (614) 471-5150 FACSIMILE (614) 471-9286		Date: September 7, 2004
		Scale: 1" = 100'
		Job No: 2004-0182
		Sheet: 1 of 1
REVISIONS		
MARK	DATE	DESCRIPTION