

85107425

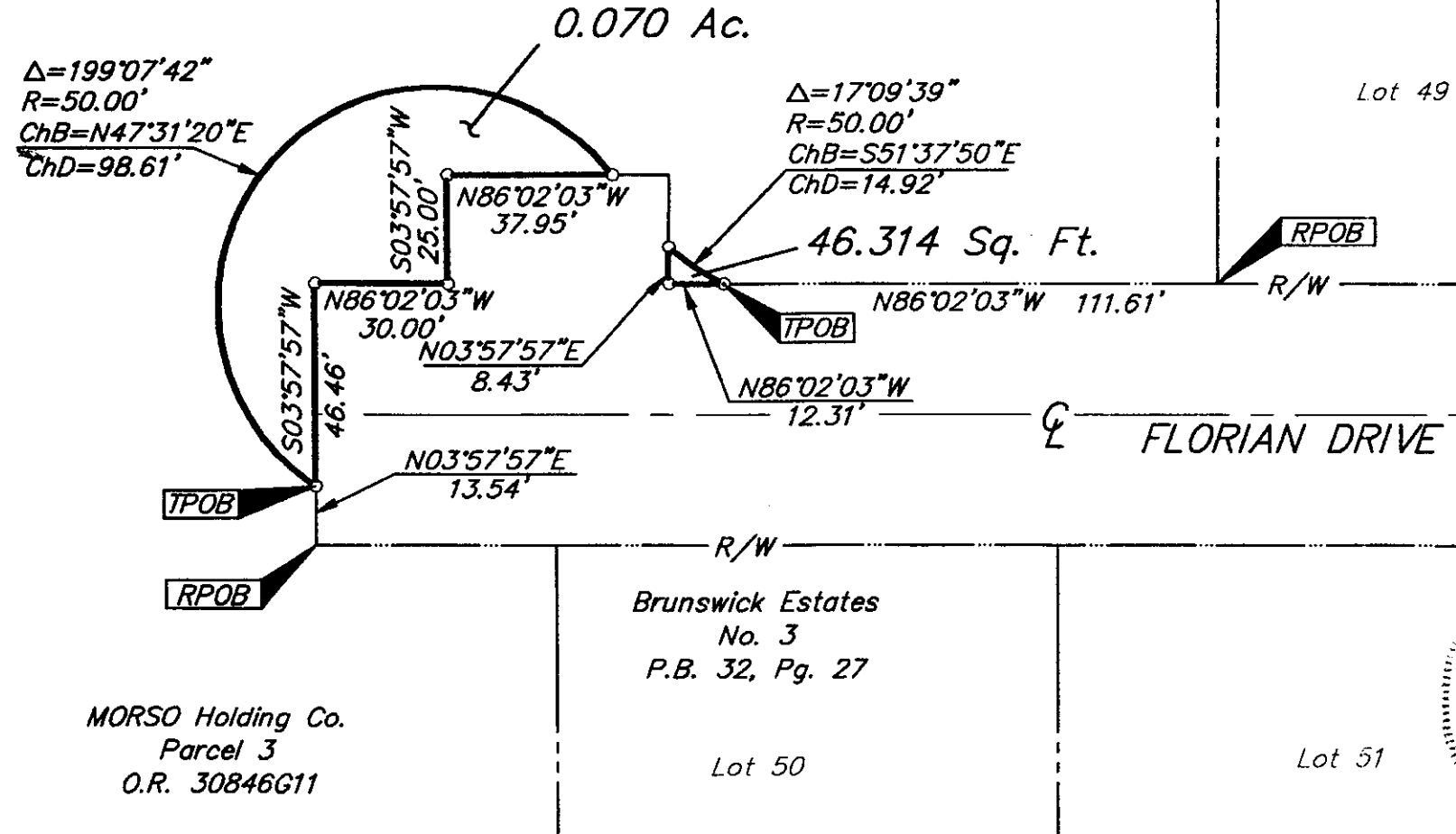
O-56-F
MIFFLIN Twp.



SURVEY OF ACREAGE PARCELS
LOCATED IN
QUARTER TOWNSHIP 2, TOWNSHIP 1, RANGE 17
UNITED STATES MILITARY LANDS
CITY OF COLUMBUS, FRANKLIN COUNTY, OHIO

SCALE 1" = 40'

FEBRUARY 25, 2003

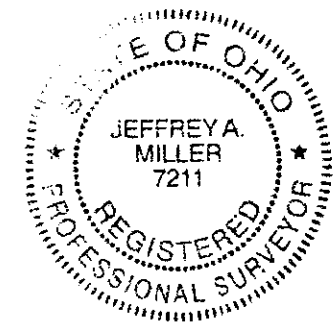


20011308.DWG - 0 XREFS - PLOTTED BY TBAXTER - February 21, 2003 - 11:10 AM



GRAPHIC SCALE
(IN FEET)

BASIS OF BEARINGS: Bearings hereon are based on the Ohio State Plane Coordinate System as per NAD 83. Control for bearings was from coordinates of monuments FRANK 64 & FRANK 164, and determines the bearing for the centerline of Morse Road as South 86°15'51" East.



EMH&T INC.

By Jeffrey A. Miller 2.25.03
Professional Surveyor No. 7211
MORSO HOLDING/20011308/11308es4