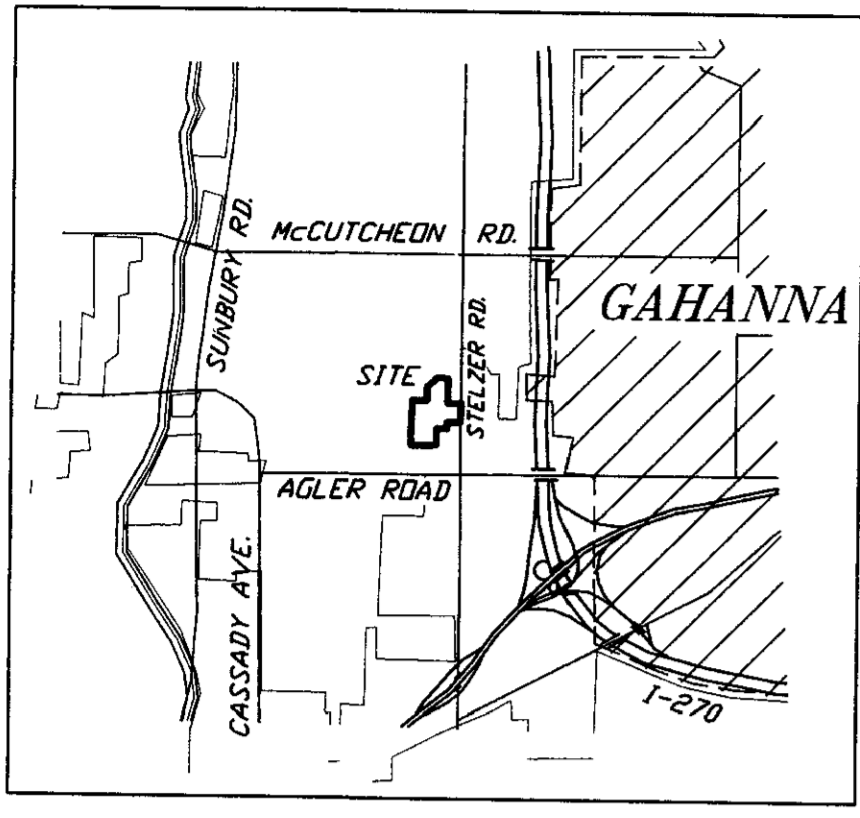
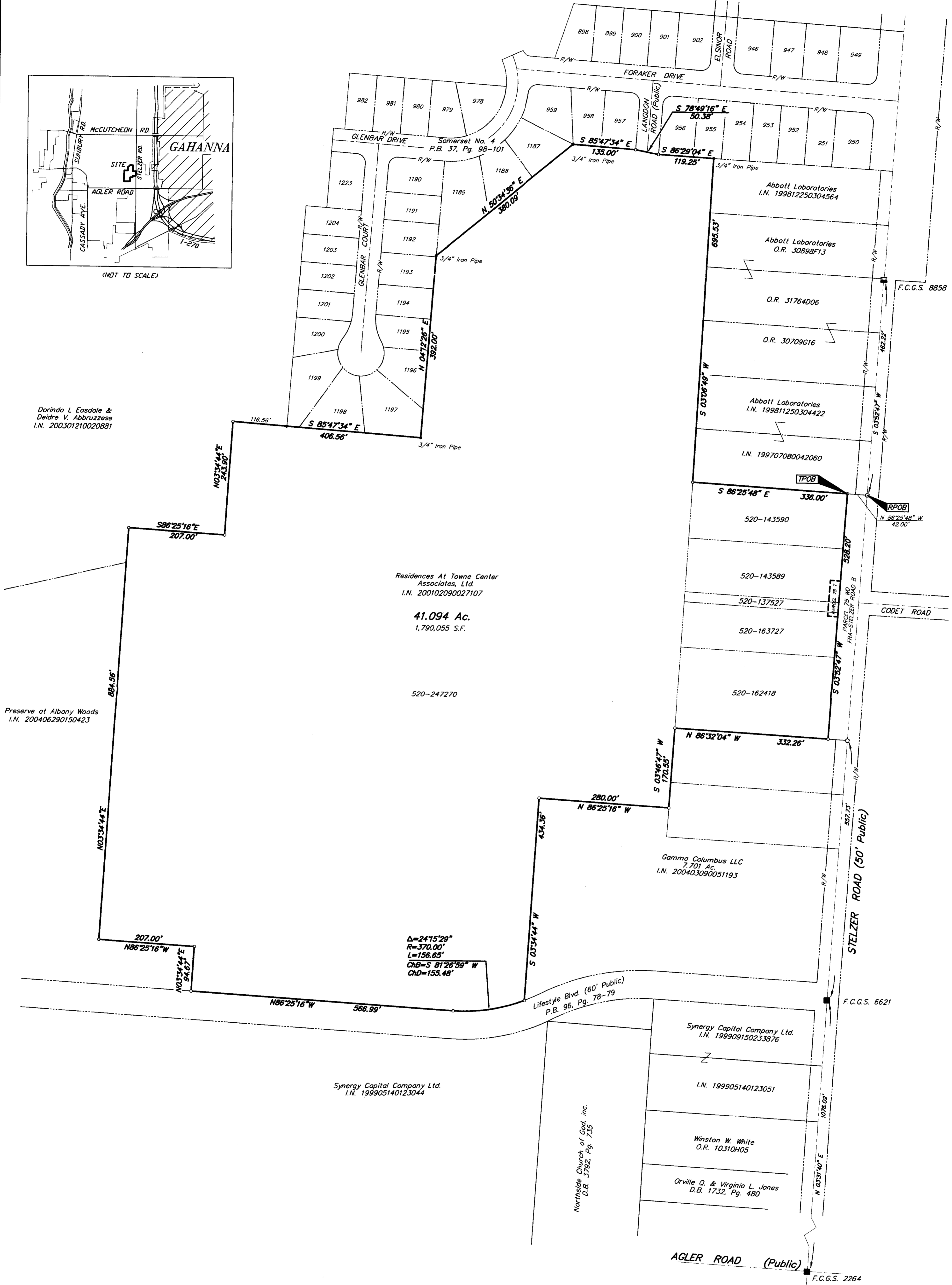


**SURVEY OF ACREAGE PARCEL
LOCATED IN
QUARTER TOWNSHIP 2, TOWNSHIP 1, RANGE 17
UNITED STATES MILITARY LANDS
CITY OF COLUMBUS, FRANKLIN COUNTY, OHIO**



(NOT TO SCALE)



Dorinda L. Easdale &
Deirdre V. Abbruzzese
I.N. 200301210020881

Preserve at Albany Woods
I.N. 200406290150423

Residences At Towne Center
Associates, Ltd.
I.N. 200102090027107

41.094 Ac.
1,790,055 S.F.

520-247270

Gamma Columbus LLC
7.701 Ac.
I.N. 200403090051193

Synergy Capital Company Ltd.
I.N. 199905140123044

Synergy Capital Company Ltd.
I.N. 199909150233876

I.N. 199905140123051

Winston W. White
O.R. 10310H05

Orville O. & Virginia L. Jones
D.B. 1732, Pg. 480

F.C.G.S. 8858

F.C.G.S. 8858

F.C.G.S. 8858

F.C.G.S. 8858

F.C.G.S. 8858

F.C.G.S. 8858

F.C.G.S. 8858

F.C.G.S. 8858

F.C.G.S. 8858

F.C.G.S. 8858

F.C.G.S. 8858

$\Delta=24'15.29"$
 $R=370.00'$
 $L=156.65'$
 $ChB=S 81'26.59" W$
 $ChD=155.48'$

Lifestyle Blvd. (60' Public)
P.B. 96, Pg. 78-79

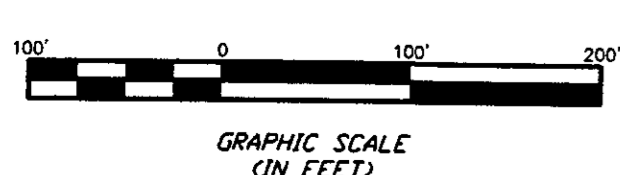
STELZER ROAD (50' Public)

AGLER ROAD (Public)

F.C.G.S. 6621

F.C.G.S. 2264

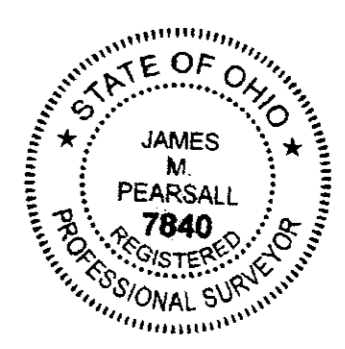
- = MON. FND.
 - = I.P. FND.
 - = I.P. SET
 - = MAG. NAIL FND.
 - = MAG. NAIL SET
 - ▲ = R.R. SPK. FND.
 - ▲ = R.R. SPK. SET
 - = P.K. NAIL FND.
- I.P.S. Set are 1 1/16" I.D. Iron pipe W/ cap inscribed EMH&T.



BASIS OF BEARINGS: Bearings are based on the Ohio State Plane Coordinate System as per NAD83. Control for bearings was from coordinates of monuments FCGS 6621 & 8858, having a bearing of North 03° 52' 47" East, established by the Franklin County Engineering Department, using Global Positioning System procedures and equipment.

RECEIVED

AUG 25 2004
Franklin County Engineer
Dean C. Ringle, P.E., P.S.



SURVEYED & PREPARED BY
J.M. PEARSCALL
CONSULTING ENGINEERS & SURVEYORS
170 MILL STREET
GAHANNA, OHIO 43230
(614) 471-5150

By: *James M. Pearsall* 8/12/04
Professional Surveyor No. 7840
Scale 1" = 100' August 11, 2004

Q:\PROJECT\2004\428\DWG\41428B\2.DWG - D. PEARSCALL - August 11, 2004 - 9:14 AM