

26.857650



ENGINEERS, SURVEYORS, PLANNERS, SCIENTISTS
EVANS, MECHWART, HAMBLETON & TILTON, INC.
170 MILL STREET, GAHANNA, OHIO 43230-3036
TEL: 614-471-5150 • FAX: 614-471-9264

SURVEY OF ACREAGE PARCEL
LOCATED IN
QUARTER TOWNSHIP 2, TOWNSHIP 2, RANGE 16
UNITED STATES MILITARY LANDS
TOWNSHIP OF PLAIN, FRANKLIN COUNTY, OHIO

0-13-G
PLAIN Twp.

SCALE 1" = 100'

DECEMBER 01, 2003

RECEIVED

DEC 02 2003

Franklin County Engineer
Dean C. Ringle, PE., PS.

Wayne L. Hursey
Forest Glenn Hursey
Gale Allen Hursey
Kathleen Sue Hursey
Kathleen S. Blankley
O.R. 13576B16
O.R. 1618H15
D.B. 3728, Pg. 210

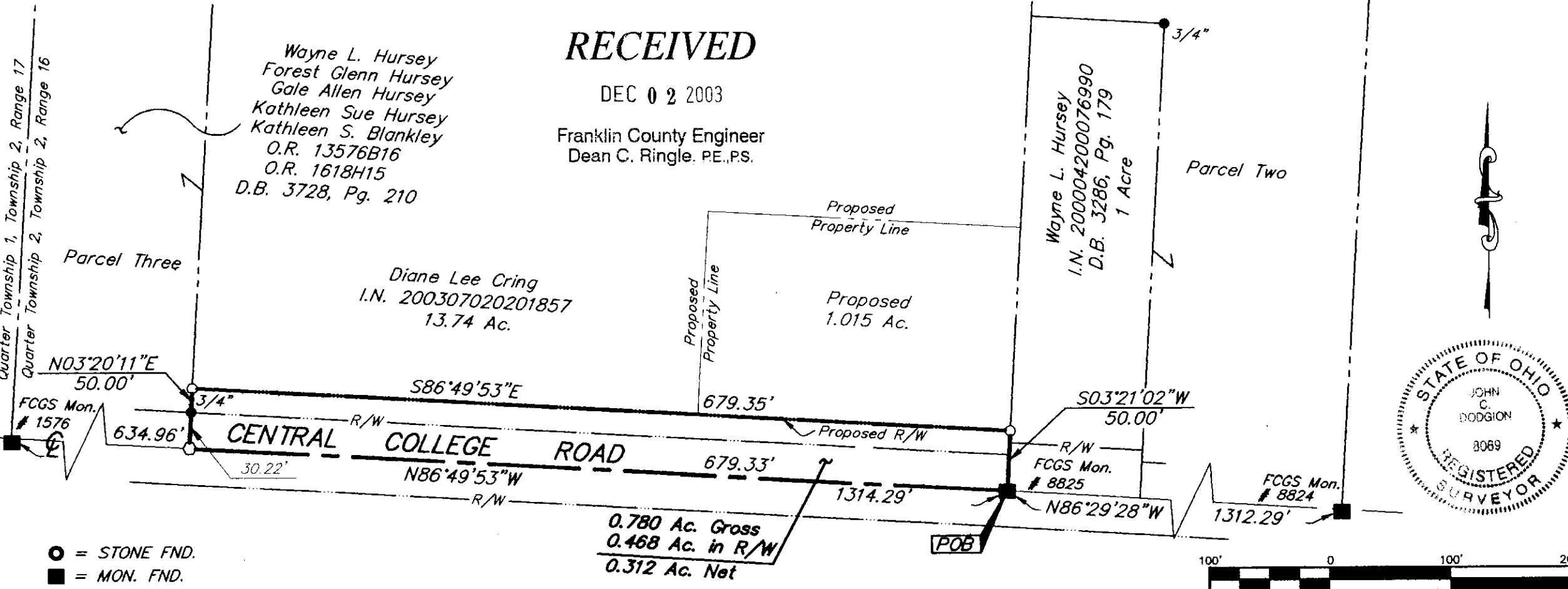
Diane Lee Cring
I.N. 200307020201857
13.74 Ac.

Wayne L. Hursey
I.N. 200004200076990
D.B. 3286, Pg. 179
1 Acre

Parcel Two

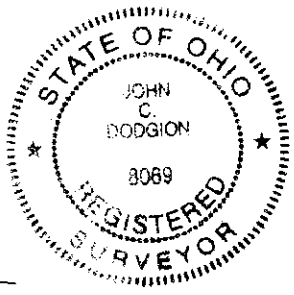
Parcel Three

Quarter Township 1, Township 2, Range 17
Quarter Township 2, Township 2, Range 16



- = STONE FND.
- = MON. FND.
- = I.P. FND.
- = I.P. SET
- = MAG. NAIL FND.
- = MAG. NAIL SET
- ▲ = R.R. SPK. FND.
- △ = R.R. SPK. SET
- ◆ = P.K. NAIL FND.

0.780 Ac. Gross
0.468 Ac. in R/W
0.312 Ac. Net



GRAPHIC SCALE
(IN FEET)

BASIS OF BEARINGS: Bearings are based on N 86°29'28" W for the centerline of Central College Road between FCGS Monument Numbers 8824 & 8825 as shown on the "Centerline Survey Plat" for said Central College Road dated 22 August 2002 and on file at the Franklin County Engineer's Office.

By John C. Dodgion
Professional Surveyor No. 8069

I.P.S Set are 13/16" I.D. Iron pipe W/ cap inscribed EMHT INC

G:\PROJECT\20031328\DWG\31328BV1.DWG - 1 XREFS: 86857650 - PLOTTED BY JBUSHBY - November 25, 2003 - 10:58 AM