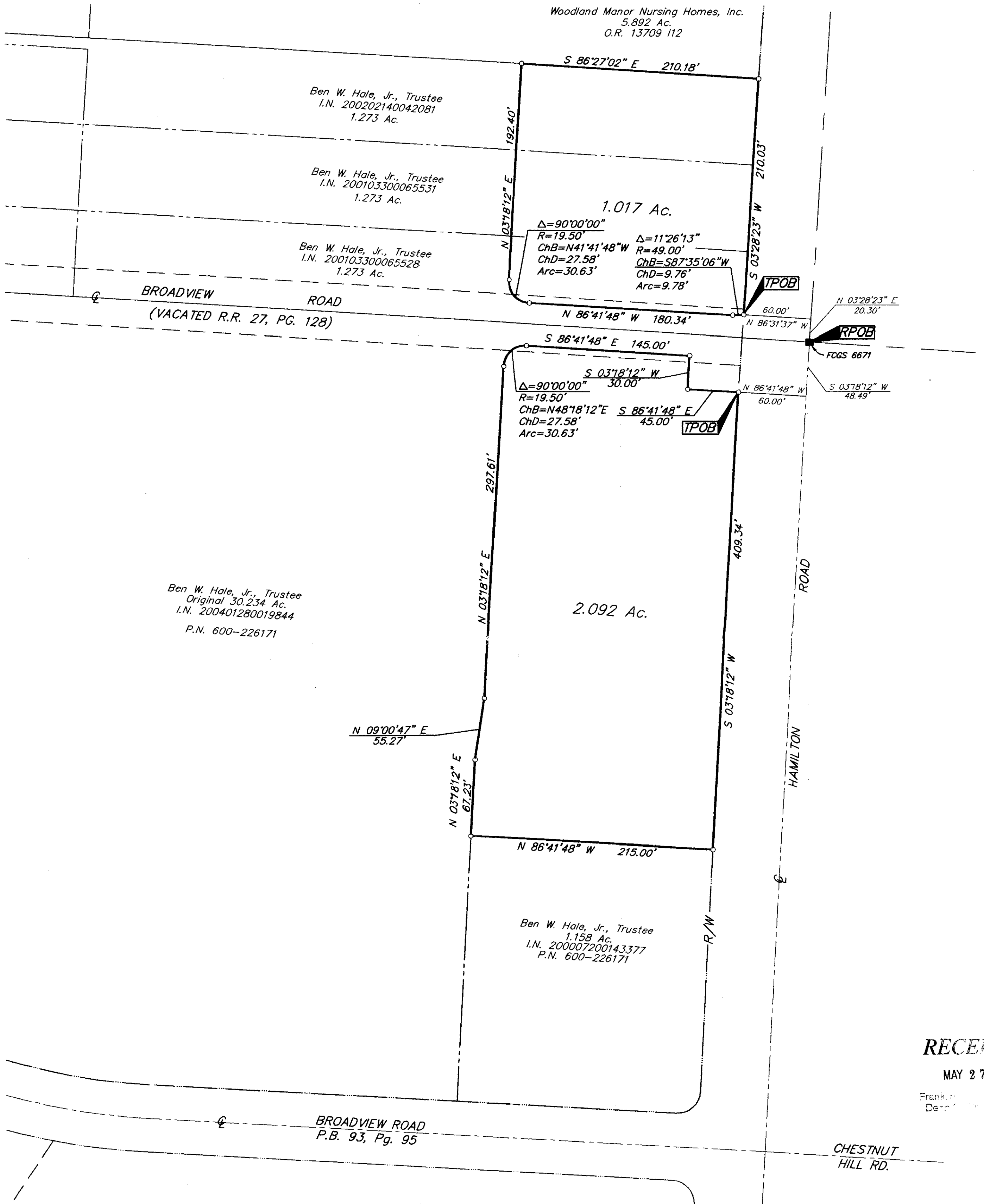


SURVEY OF ACREAGE PARCELS
QUARTER TOWNSHIP 4, TOWNSHIP 8, RANGE 17
UNITED STATES MILITARY LANDS
CITY OF COLUMBUS, FRANKLIN COUNTY, OHIO



RECEIVED

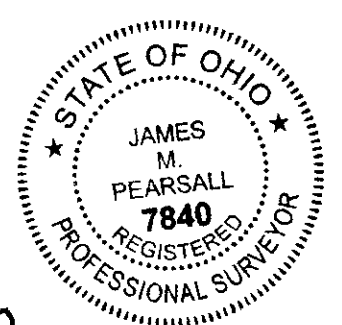
MAY 27 2004

Franklin County, Ohio
Deputy Recorder

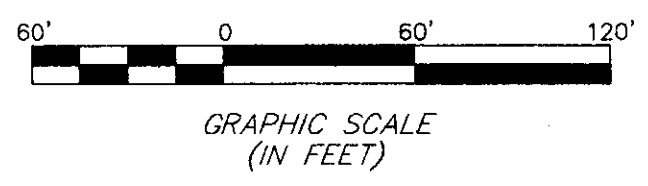
- = STONE FND.
- = MON. FND.
- = I.P. FND.
- = I.P. SET
- = MAG. NAIL FND.
- = MAG. NAIL SET
- ▲ = R.R. SPK. FND.
- △ = R.R. SPK. SET
- = P.K. NAIL FND.

I.P. Set are 13/16" I.D. iron pipe with cap inscribed EMHT INC

BASIS OF BEARINGS:
 Bearings are based on the same bearing system as "Asbury Ridge of New Albany Section 1" as recorded in P.B. 93, Pg. 97



By *James M. Pearsall* 6/26/04
 Professional Surveyor No. 7840



 ENGINEERS, SURVEYORS, PLANNERS, SCIENTISTS EVANS, MECHWART, HAMBLETON & TILTON, INC. 170 MILL STREET GAHANNA, OHIO 43230 TELEPHONE (614) 471-5150 FACSIMILE (614) 471-9286		Date: May 26, 2004
		Scale: 1" = 60'
		Job No: 2003-0490
		Sheet: 1 of 1
REVISIONS		
MARK	DATE	DESCRIPTION
BJS	5/26/04	Modify parcel boundary

I:\CADDATA\1\SURVEY\PROJECT\20030490\DWG\30490B\2.DWG-18X24 PORTRAIT - 1 XREF: XRI - PLOTTED BY: JPEARSALL - WEDNESDAY, MAY 26 2004 - 5:16:17 PM