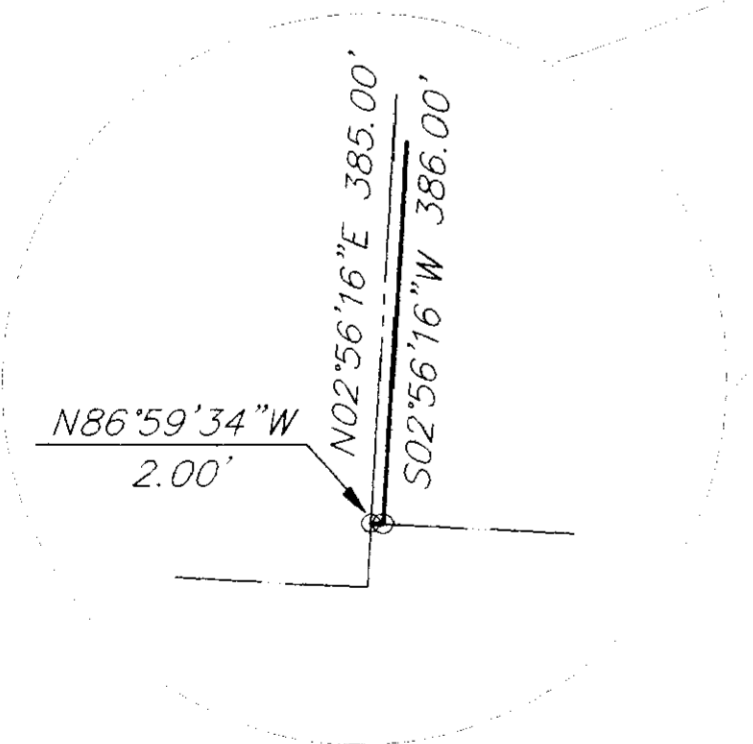
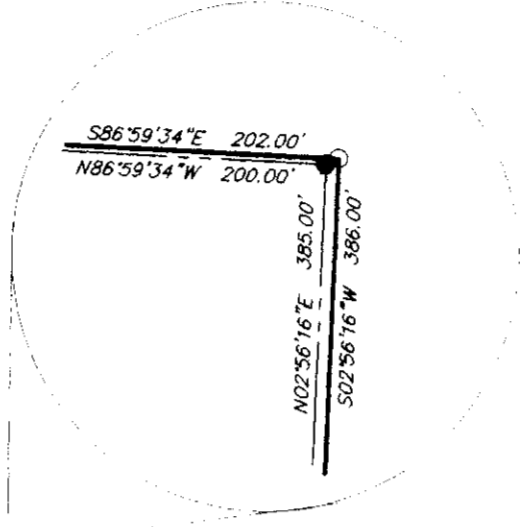
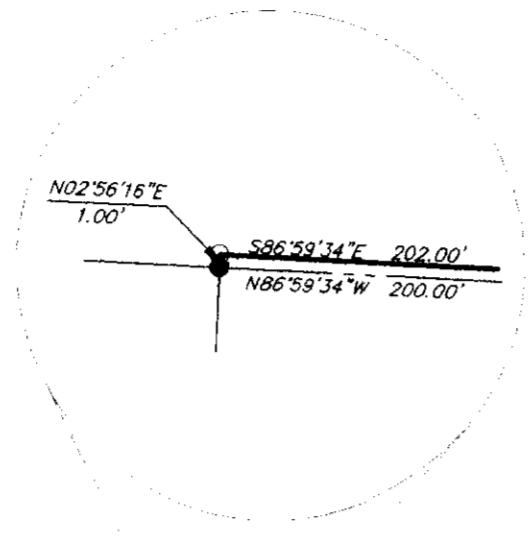
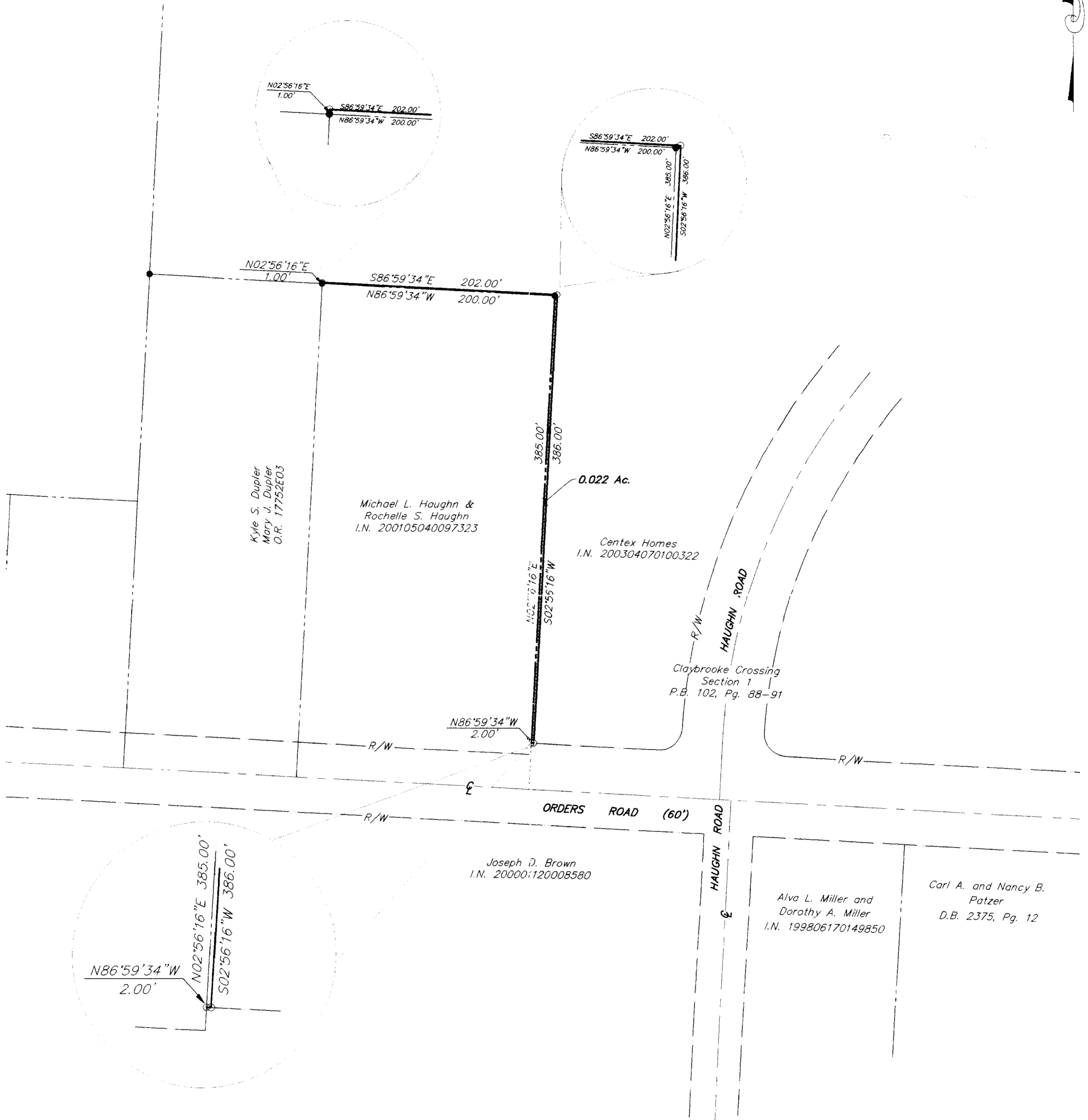
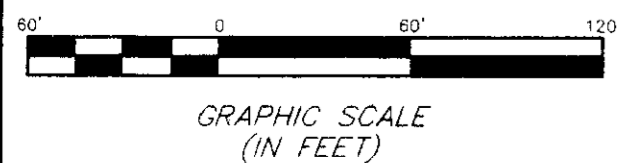


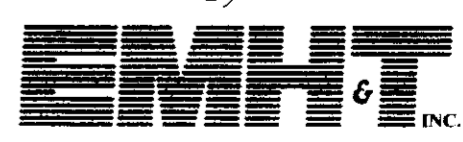
SURVEY OF ACREAGE PARCEL
 LOCATED IN
 VIRGINIA MILITARY SURVEY 1383
 CITY OF GROVE CITY, FRANKLIN COUNTY, OHIO

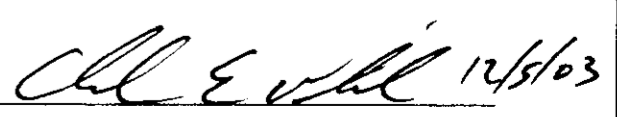


- = STONE FND.
 - = MON. FND.
 - = I.P. FND.
 - = I.P. SET
 - = MAG. NAIL FND.
 - = MAG. NAIL SET
 - ▲ = R.R. SPK. FND.
 - △ = R.R. SPK. SET
 - = P.K. NAIL FND.
- I.P.S Set are 1 3/16" I.D. Iron pipe W/ cap inscribed EMHT INC

BASIS OF BEARINGS: The bearings shown on this plat are based on a field traverse originating and tying to Franklin County survey control monuments, including Frank 25 and Frank 125 and are based on the Ohio State Plane Coordinate System, South Zone as per NAD 83.



Surveyed & Prepared
 By

 ENGINEERS, SURVEYORS, PLANNERS, SCIENTISTS
 EVANS, MECHWART, HAMBLETON & TILTON, INC.
 170 MILL STREET, GAHANNA, OHIO 43230-3036
 TEL: 614-471-5150 • FAX: 614-471-9286

By 
 Professional Surveyor No. 7868

SCALE: 1" = 60'
 Revised SEPTEMBER 10, 2003
 DECEMBER 4, 2003

D:\PROJECT\20020930\DWG\20020930.DWG - 0 XREFS - PLOTTED BY TBAKTER - September 10, 2003 - 7:15 AM