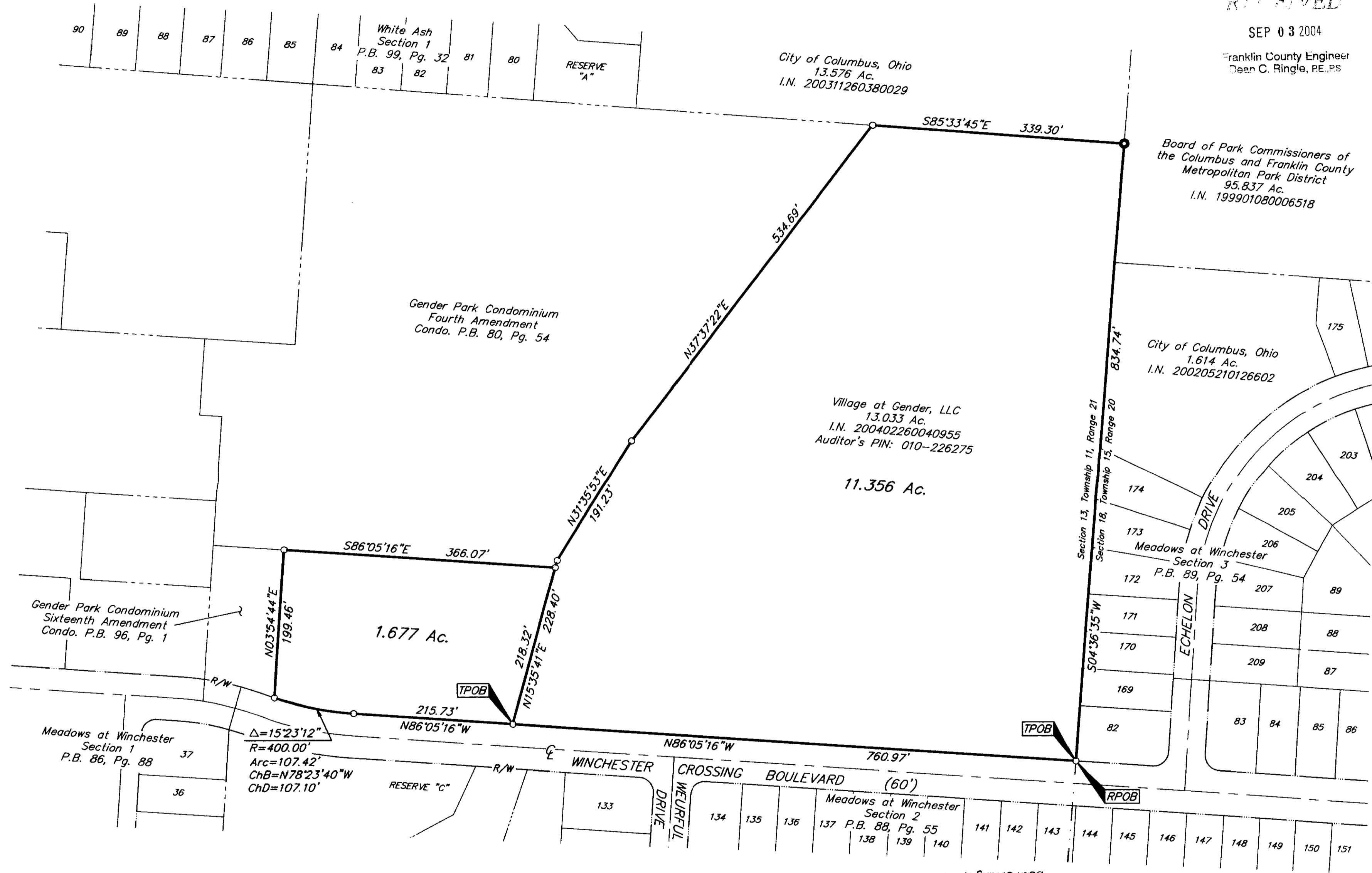


SURVEY OF ACREAGE PARCELS
SECTION 13, TOWNSHIP 11, RANGE 21
BUCKINGHAM'S SURVEY, CONGRESS LANDS
CITY OF COLUMBUS, FRANKLIN COUNTY, OHIO

RECEIVED

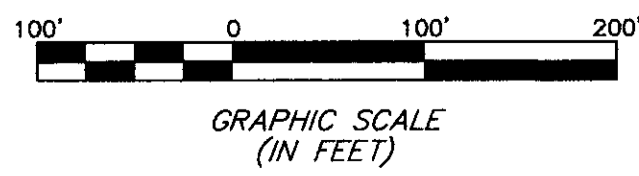
SEP 03 2004

Franklin County Engineer
 Dean C. Ringle, PE, PS



I:\CADD\TA1\PROJECT\20041481\DWG\41481BVD\WC<18>24 LANDSCAPE - NO XREFS - PLOTTED BY: JBUSHBY - THURSDAY, SEP 2 2004 - 8:59:49 AM

- = STONE FND.
 - = MON. FND.
 - = I.P. FND.
 - = I.P. SET
 - = MAG. NAIL FND.
 - = MAG. NAIL SET
 - ▲ = R.R. SPK. FND.
 - △ = R.R. SPK. SET
 - = P.K. NAIL FND.
- I.P. Set are 13/16" I.D. iron pipe with cap inscribed EMHT INC

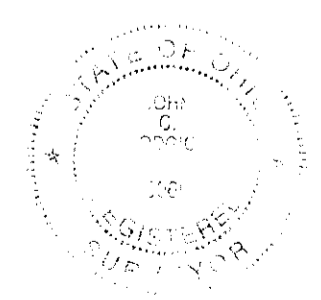


Bearings are based on The Ohio State Plane Coordinate System per NAD83, south zone. Control for bearings was from coordinates of Franklin County Geodetic Survey Monument Numbers 9968 and 9932, having a bearing of South 04°14'33" West, as established by the Franklin County Engineering Department.

Franklin County Engineer
 Dean C. Ringle, PE, PS
 SEP 03 2004

RECEIVED

09/03/04
 By: *John C. Dady*
 Professional Surveyor No. 8069



 EMHT INC. ENGINEERS, SURVEYORS, PLANNERS, SCIENTISTS EVANS, MECHWART, HAMBLETON & TILTON, INC. 170 MILL STREET GAHANNA, OHIO 43230 TELEPHONE (614) 471-5130 FACSIMILE (614) 471-9286	Date: September 2, 2004
	Scale: 1" = 100'
	Job No: 2004-1481
	Sheet: 1 of 1
REVISIONS	
MARK	DATE DESCRIPTION