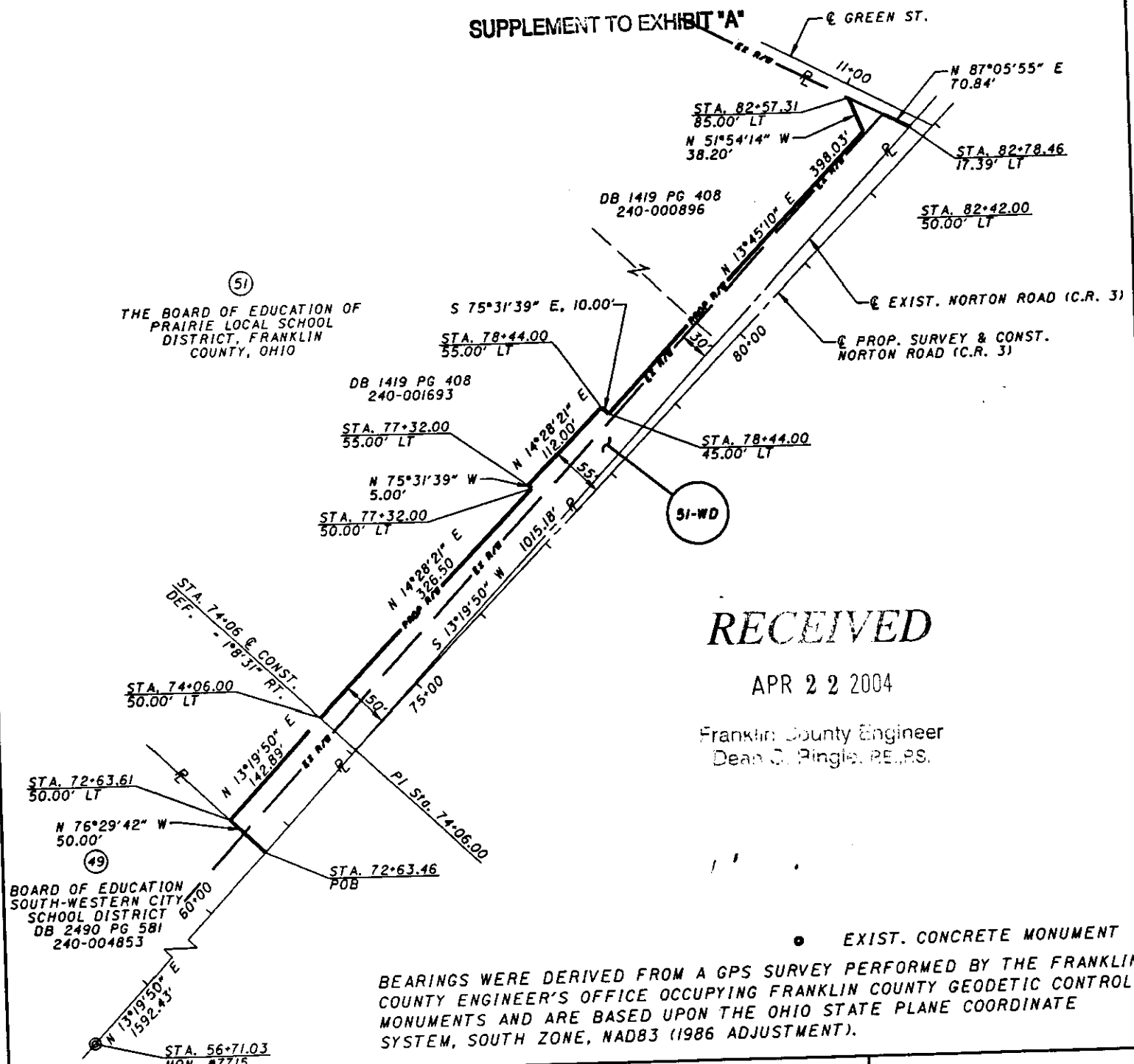


LOCATED IN THE TOWNSHIP OF PRAIRIE, COUNTY OF FRANKLIN,  
 OF OHIO, BEING LOCATED IN V.M.S. #1474 AND BEING 0.988 ACRES OUT OF  
 555 ACRES, CONVEYED TO BOARD OF EDUCATION OF PRAIRIE LOCAL SCHOOL  
 DISTRICT, FRANKLIN COUNTY, OHIO AS DESCRIBED IN DEED BOOK 1416, PAGE 336  
 AND DEED BOOK 1419, PAGE 408.

78857100

**SUPPLEMENT TO EXHIBIT "A"**



(51)  
 THE BOARD OF EDUCATION OF  
 PRAIRIE LOCAL SCHOOL  
 DISTRICT, FRANKLIN  
 COUNTY, OHIO

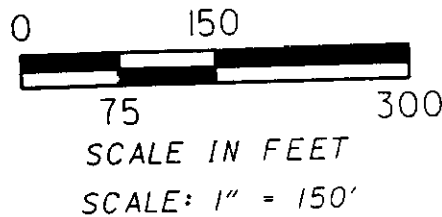
(49)  
 BOARD OF EDUCATION  
 SOUTH-WESTERN CITY  
 SCHOOL DISTRICT  
 DB 2490 PG 581  
 240-004853

**RECEIVED**

APR 22 2004

Franklin County Engineer  
 Dean C. Pingle, P.E., P.S.

● EXIST. CONCRETE MONUMENT  
 BEARINGS WERE DERIVED FROM A GPS SURVEY PERFORMED BY THE FRANKLIN  
 COUNTY ENGINEER'S OFFICE OCCUPYING FRANKLIN COUNTY GEODETIC CONTROL  
 MONUMENTS AND ARE BASED UPON THE OHIO STATE PLANE COORDINATE  
 SYSTEM, SOUTH ZONE, NAD83 (1986 ADJUSTMENT).



**51-WD**  
 THE BOARD OF EDUCATION  
 OF PRAIRIE LOCAL SCHOOL  
 DISTRICT, FRANKLIN  
 COUNTY, OHIO  
 DB 1416 PG. 336, DB 1419 PG 408  
 240-001693, 240-000896



**Parsons Brinckerhoff Ohio, Inc.**  
 6235 Enterprise Court  
 Dublin, Ohio 43016

*Kerry D. Osborn*  
 KERRY D. OSBORN  
 P.S. # 7326  
 DATE 4/2/02