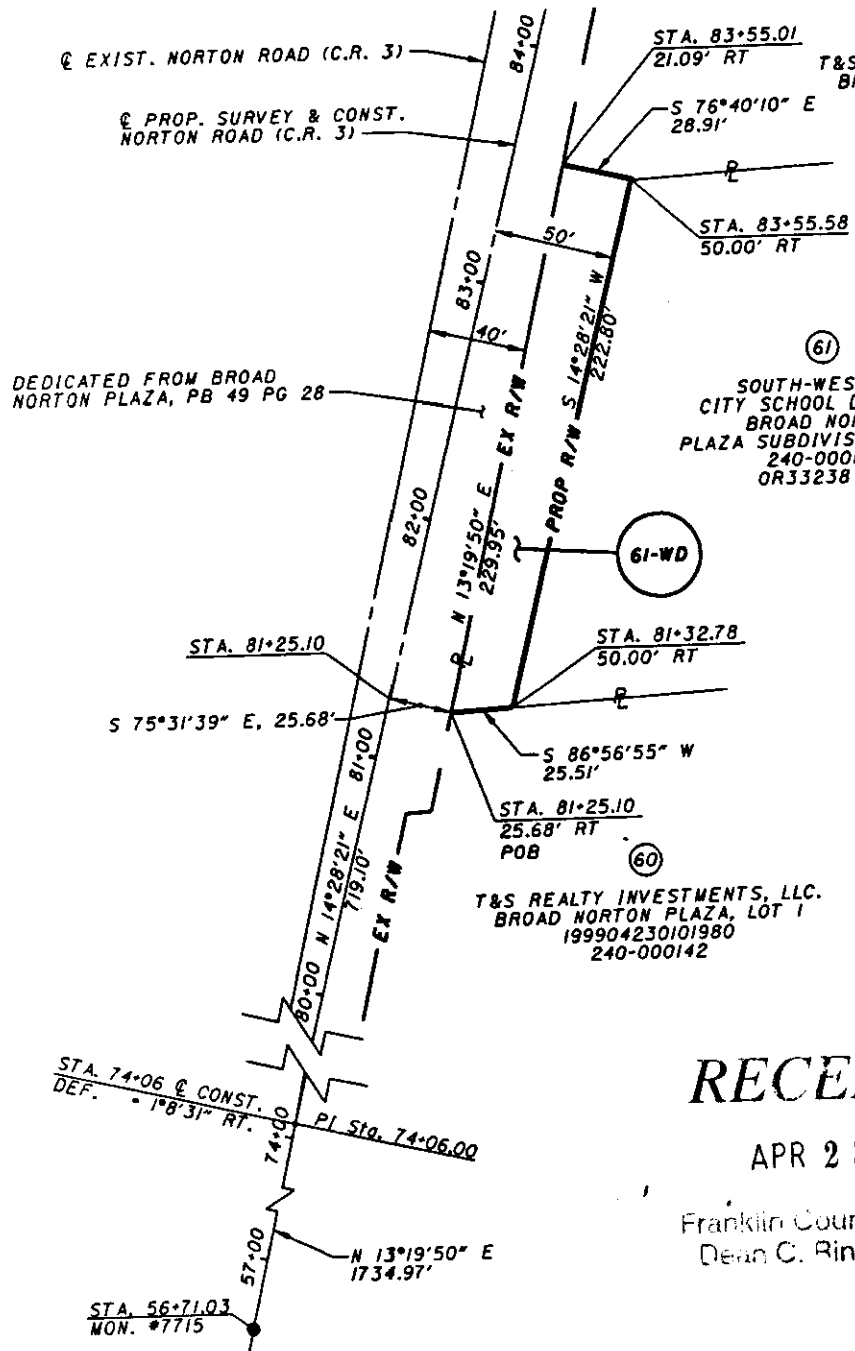


N-58
PRAIRIE Twp.

SITUATED IN THE TOWNSHIP OF PRAIRIE, COUNTY OF FRANKLIN,
STATE OF OHIO, BEING LOCATED IN V.M.S. #1474 AND BEING 0.139 ACRES OUT OF
60 ACRES, LOT 2 OF THE BROAD NORTON PLAZA SUBDIVISION, CONVEYED TO SOUTH
WESTERN CITY SCHOOL DISTRICT AS DESCRIBED IN OFFICIAL RECORD # 33238 C14.

SUPPLEMENT TO EXHIBIT 'A'



(60)
T&S REALTY INVESTMENTS, LLC.
BROAD NORTON PLAZA, LOT 1
199904230101980
240-000142

(61)
SOUTH-WESTERN
CITY SCHOOL DISTRICT
BROAD NORTON
PLAZA SUBDIVISION, LOT 2
240-000143
OR33238 C14

(60)
T&S REALTY INVESTMENTS, LLC.
BROAD NORTON PLAZA, LOT 1
199904230101980
240-000142

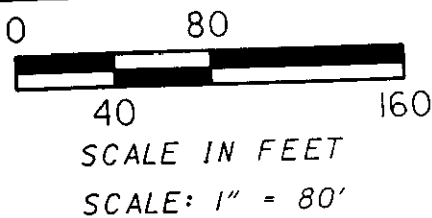
RECEIVED

APR 23 2004

Franklin County Engineer
Dean C. Ringle, P.E., P.S.

BEARINGS WERE DERIVED FROM A GPS SURVEY PERFORMED BY THE FRANKLIN COUNTY ENGINEER'S OFFICE OCCUPYING FRANKLIN COUNTY GEODETIC CONTROL MONUMENTS AND ARE BASED UPON THE OHIO STATE PLANE COORDINATE SYSTEM, SOUTH ZONE, NAD83 (1986 ADJUSTMENT).

EXIST. CONCRETE MONUMENT



61-WD
SOUTH-WESTERN CITY
SCHOOL DISTRICT
OR33238 C14
240-000143



Parsons Brinckerhoff Ohio, Inc.
6235 Enterprise Court
Dublin, Ohio 43016

Kerry D. Osborn
KERRY D. OSBORN
P.S. #7326
6/4/02
DATE

78852100