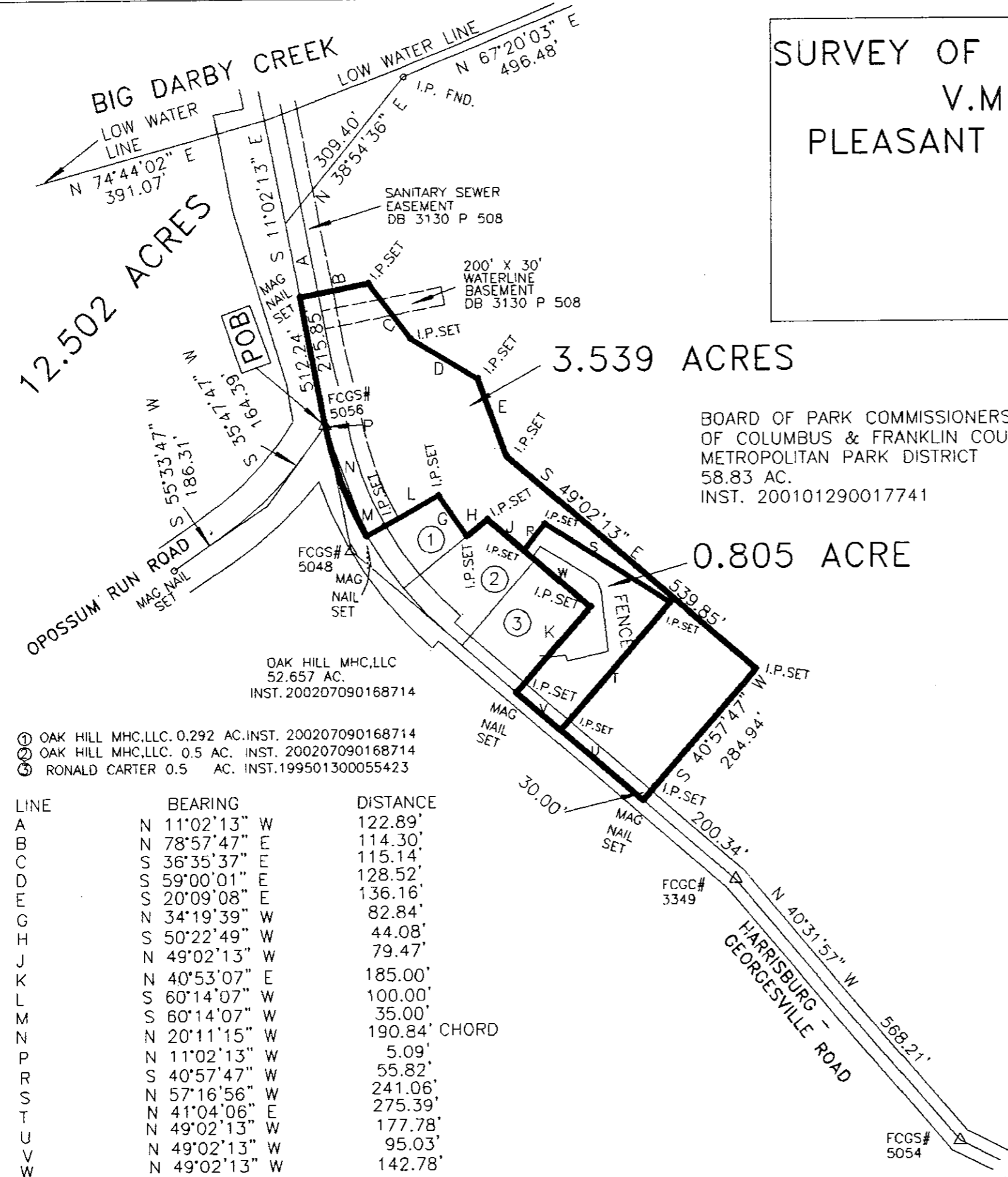
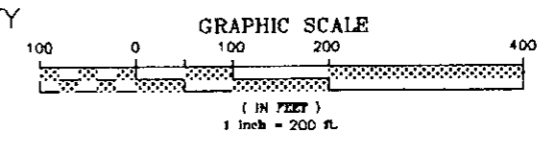


SURVEY OF 3.539 & 0.805 ACRE TRACTS
 V.M.S. 2596 AND 2597
 PLEASANT TWP., FRANKLIN CO., OHIO
 FOR
 METRO PARKS

NOVEMBER 2003 141-2000



BOARD OF PARK COMMISSIONERS
 OF COLUMBUS & FRANKLIN COUNTY
 METROPOLITAN PARK DISTRICT
 58.83 AC.
 INST. 200101290017741



RECEIVED

NOV 19 2003

Franklin County Engineer
 Dean C. Ringle, PE., PS.

BEARINGS ARE BASED ON THE BEARING OF NORTH 11°02'13" WEST FOR THE CENTERLINE OF HARRISBURG-GEORGESVILLE ROAD NORTH OF OPOSSUM RUN ROAD FOUND ON THE 1966 FRANKLIN COUNTY ENGINEERING DEPT. PLAN FOR HARRISBURG - GEORGESVILLE ROAD.

ALL SET IRON PINS ARE 5/8"X30" REBARS WITH YELLOW PLASTIC CAPS EMBOSSED "THOMAS ENGR & SURVEYING".

THE THOMAS ENGINEERING & SURVEYING CO.
 3803 SULLIVANT AVENUE
 COLUMBUS, OHIO 43228

Robert G. Watts

ROBERT G. WATTS

RPLS #4138

- ① OAK HILL MHC,LLC. 0.292 AC. INST. 200207090168714
- ② OAK HILL MHC,LLC. 0.5 AC. INST. 200207090168714
- ③ RONALD CARTER 0.5 AC. INST.199501300055423

LINE	BEARING	DISTANCE
A	N 11°02'13" W	122.89'
B	N 78°57'47" E	114.30'
C	S 36°35'37" E	115.14'
D	S 59°00'01" E	128.52'
E	S 20°09'08" E	136.16'
G	N 34°19'39" W	82.84'
H	S 50°22'49" W	44.08'
J	N 49°02'13" W	79.47'
K	N 40°53'07" E	185.00'
L	S 60°14'07" W	100.00'
M	S 60°14'07" W	35.00'
N	N 20°11'15" W	190.84' CHORD
P	N 11°02'13" W	5.09'
R	S 40°57'47" W	55.82'
S	N 57°16'56" W	241.06'
T	N 41°04'06" E	275.39'
U	N 49°02'13" W	177.78'
V	N 49°02'13" W	95.03'
W	N 49°02'13" W	142.78'