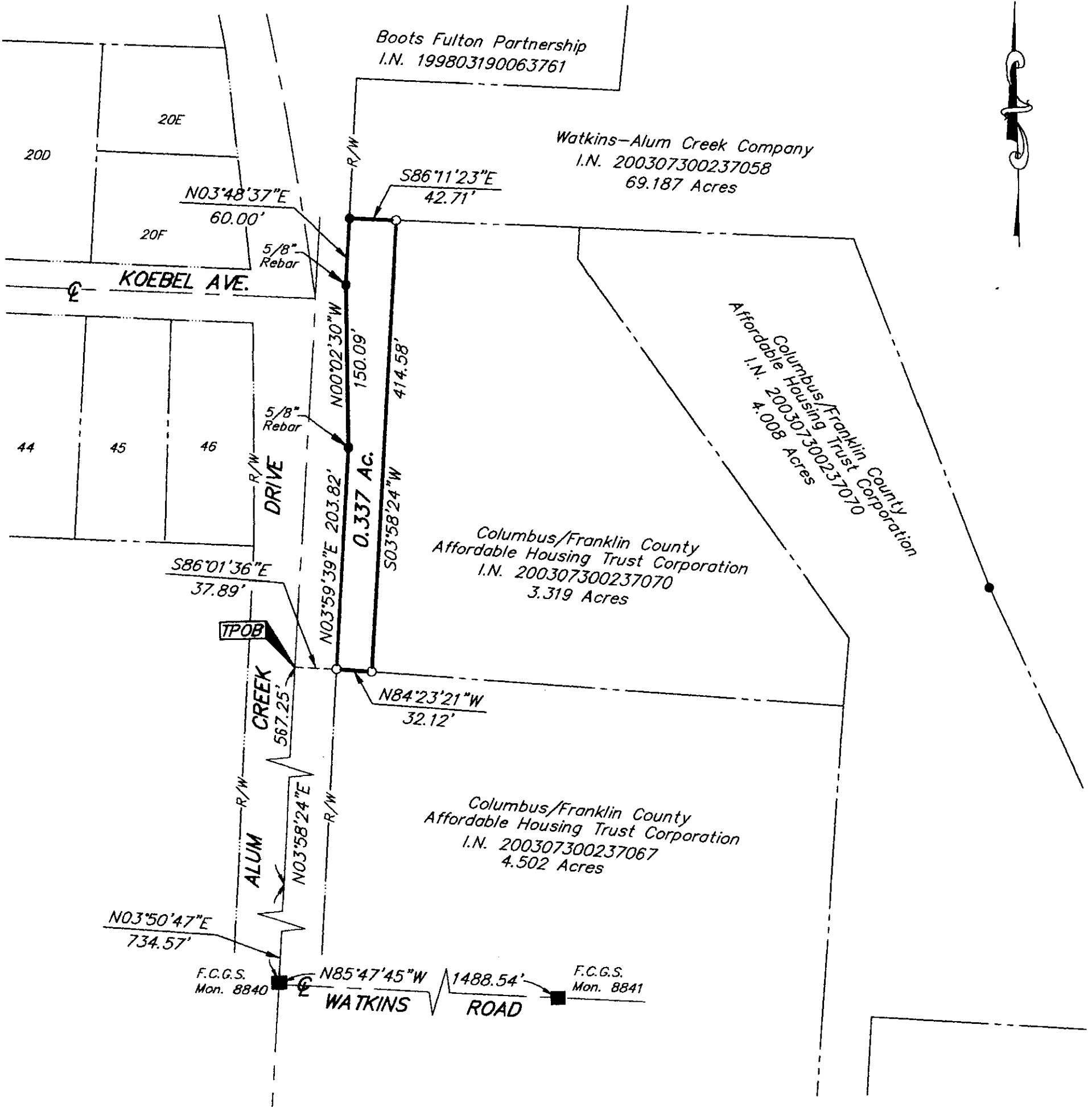


SURVEY OF ACREAGE PARCEL
 LOCATED IN
 SECTION 6, TOWNSHIP 11, RANGE 21
 UNITED STATES MILITARY LANDS
 CITY OF COLUMBUS, FRANKLIN COUNTY, OHIO

AUGUST 15, 2003

SCALE 1" = 100'



- = STONE FND.
- = MON. FND.
- = I.P. FND.
- = I.P. SET
- = MAG. NAIL FND.
- = MAG. NAIL SET
- ▲ = R.R. SPK. FND.
- △ = R.R. SPK. SET
- = P.K. NAIL FND.

I.P.S. Set are 13/16" I.D. Iron pipe w/ cap inscribed EMHT INC



GRAPHIC SCALE (IN FEET)

RECEIVED

AUG 18 2003

Franklin County Engineer
 Dean C. Ringle, P.E., P.S.



BASIS OF BEARINGS: Bearings are based on the Ohio State Plane Coordinate System as per NAD83. Control for bearings was from coordinates of monuments 8840 & 8841, established by the Franklin County Engineering Department, using Global Positioning System procedures and equipment.

By *Jeffrey A. Miller* 8-15-03
 Professional Surveyor No. 7211

PROJECT\20030587\DWG\30587BY.DWG - 0 XREFS - PLOTTED BY JBUSHBY - May 11, 2003 - 9:23 AM