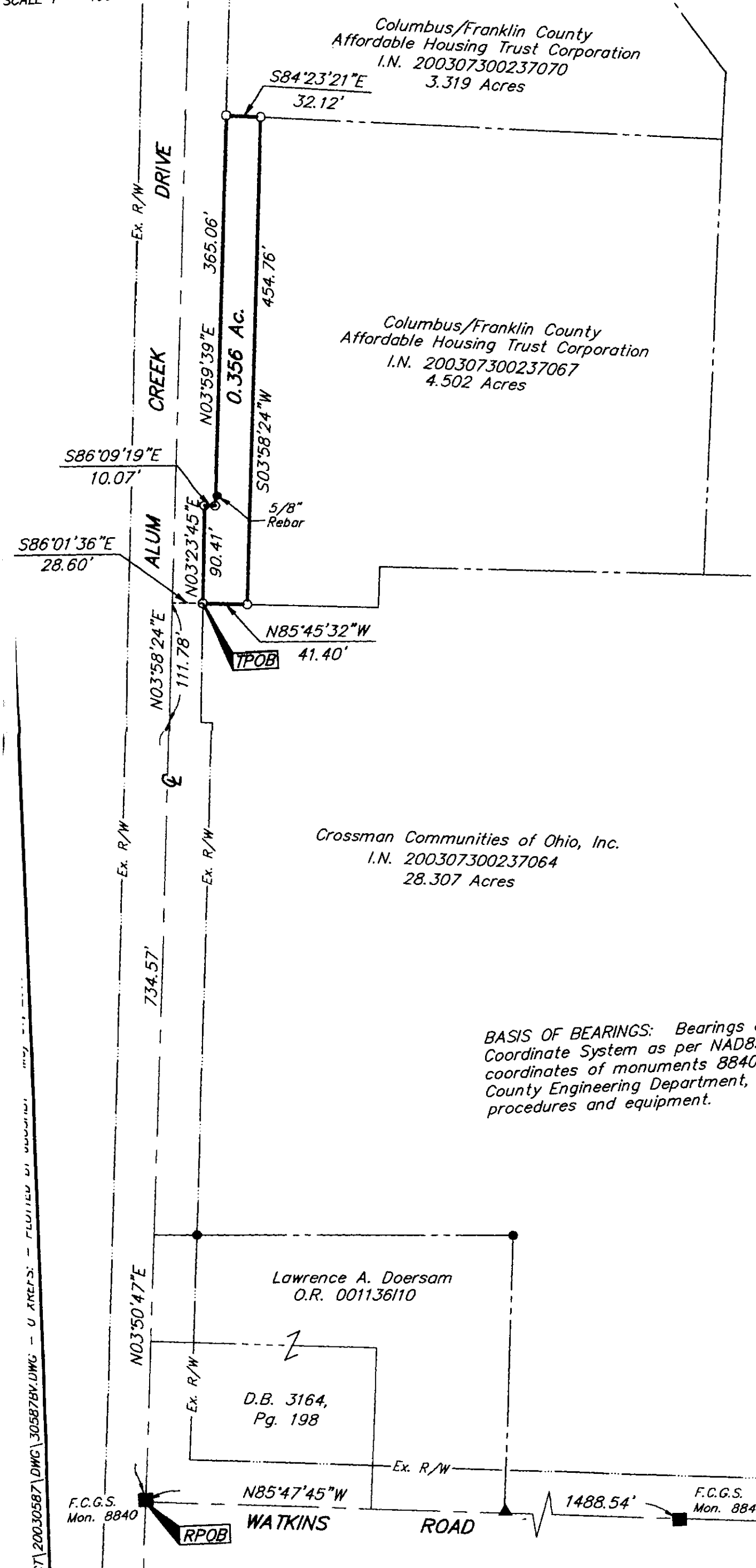


SURVEY OF ACREAGE PARCEL
 LOCATED IN
 SECTION 6, TOWNSHIP 11, RANGE 21
 UNITED STATES MILITARY LANDS
 CITY OF COLUMBUS, FRANKLIN COUNTY, OHIO

AUGUST 15, 2003

SCALE 1" = 100'



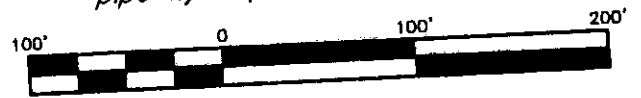
RECEIVED

AUG 18 2003

Franklin County Engineer
 Dean C. Ringle, P.E., P.S.

- = STONE FND.
- = MON. FND.
- = I.P. FND.
- = I.P. SET
- = MAG. NAIL FND.
- = MAG. NAIL SET
- ▲ = R.R. SPK. FND.
- △ = R.R. SPK. SET
- ◆ = P.K. NAIL FND.

I.P.S Set are 13/16" I.D. Iron pipe W/ cap inscribed EMHT INC



GRAPHIC SCALE
 (IN FEET)

BASIS OF BEARINGS: Bearings are based on the Ohio State Plane Coordinate System as per NAD83. Control for bearings was from coordinates of monuments 8840 & 8841, established by the Franklin County Engineering Department, using Global Positioning System procedures and equipment.



By *Jeffrey A. Miller* 8/15/03
 Professional Surveyor No. 7211

PROJECT 20030587.DWG 30587BY.DWG - U XREFS - FLUTTER BY SURVEY