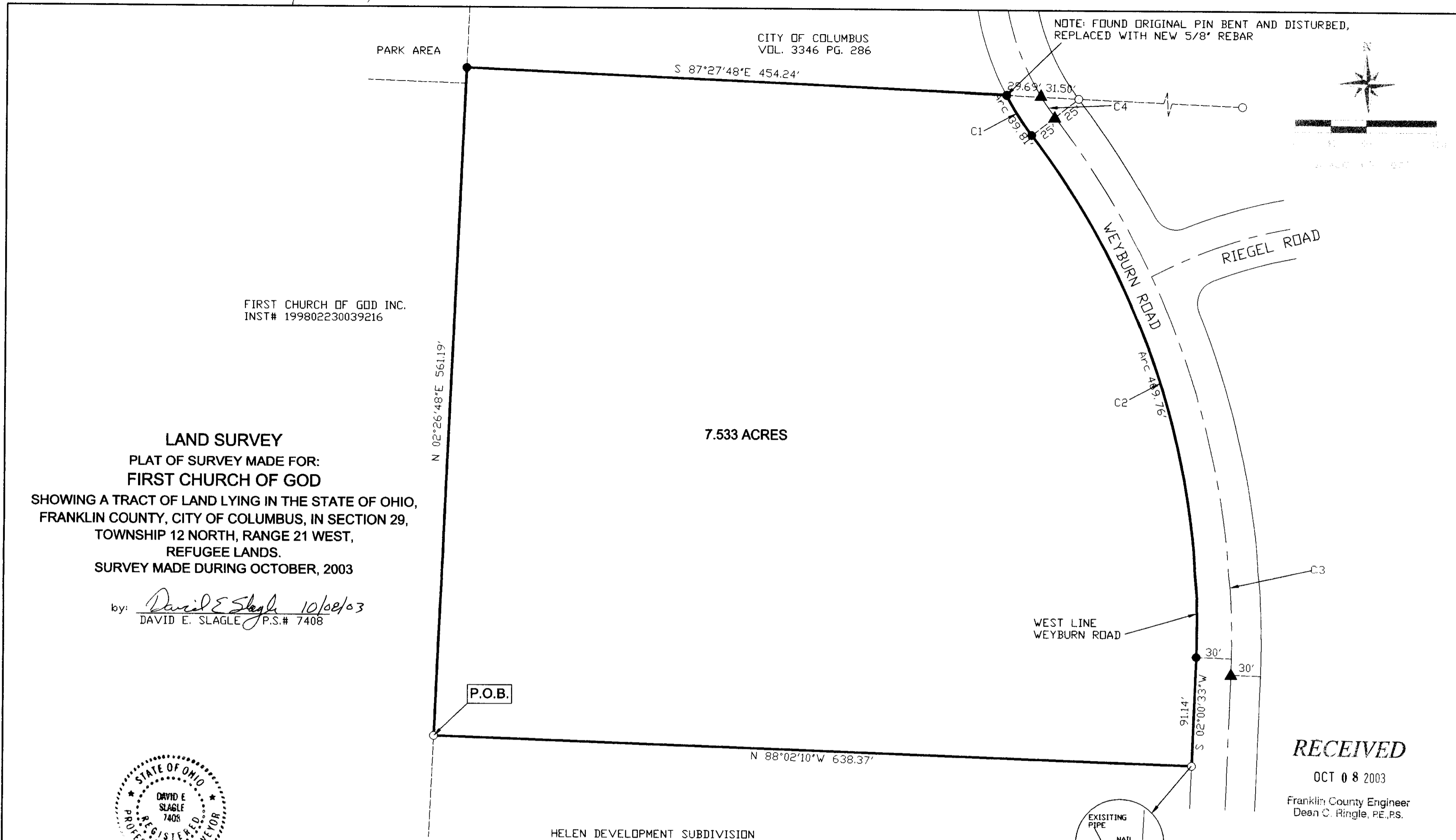


Resurvey



FIRST CHURCH OF GOD INC.
INST# 199802230039216

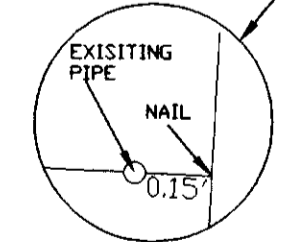
LAND SURVEY
PLAT OF SURVEY MADE FOR:
FIRST CHURCH OF GOD
SHOWING A TRACT OF LAND LYING IN THE STATE OF OHIO,
FRANKLIN COUNTY, CITY OF COLUMBUS, IN SECTION 29,
TOWNSHIP 12 NORTH, RANGE 21 WEST,
REFUGEE LANDS.
SURVEY MADE DURING OCTOBER, 2003

by: David E. Slagle 10/08/03
DAVID E. SLAGLE P.S.# 7408



HELEN DEVELOPMENT SUBDIVISION
PLAT BOOK 51 PG. 72

CURVE	RADIUS	TANGENT	LENGTH	DELTA	DEGREE	CHORD	CH.BEARING
C1	235.00'	19.95'	39.81'	9°42'19"	24°22'52"	39.76'	N 32°57'26"W
C2	676.91'	244.78'	469.76'	39°45'43"	8°27'52"	460.39'	S 17°56'25"E
C3	723.52'	261.66'	502.14'	39°45'54"	7°55'09"	492.13'	S 17°55'39"E
C4	210.00'	10.22'	20.43'	5°34'22"	27°17'01"	20.42'	N 35°01'25"W



DETAIL (NOT TO SCALE)

- LEGEND:**
- I.P. FOUND
 - 5/8" I.P. SET W/CAP
 - △ P.K. FOUND
 - ▲ P.K. SET

RECEIVED
OCT 08 2003
Franklin County Engineer
Dean C. Ringle, PE, PS.

MADE FOR: **FIRST CHURCH OF GOD**

XYZ SURVEY SERVICE INC. 3011 COLUMBUS ST. #202 GROVE CITY OH 43123 FAX: 614-875-7862 PH: 614-539-9220	DATE: 10/8/2003	JOB# 23-147
	SCALE: 1" = 60'	F.B.# 32
	REVISED:	MAP# 23-147
	DRAWN BY: M.P.G.	CHECKED BY: D.E.S.
		CAD FILE 23-147