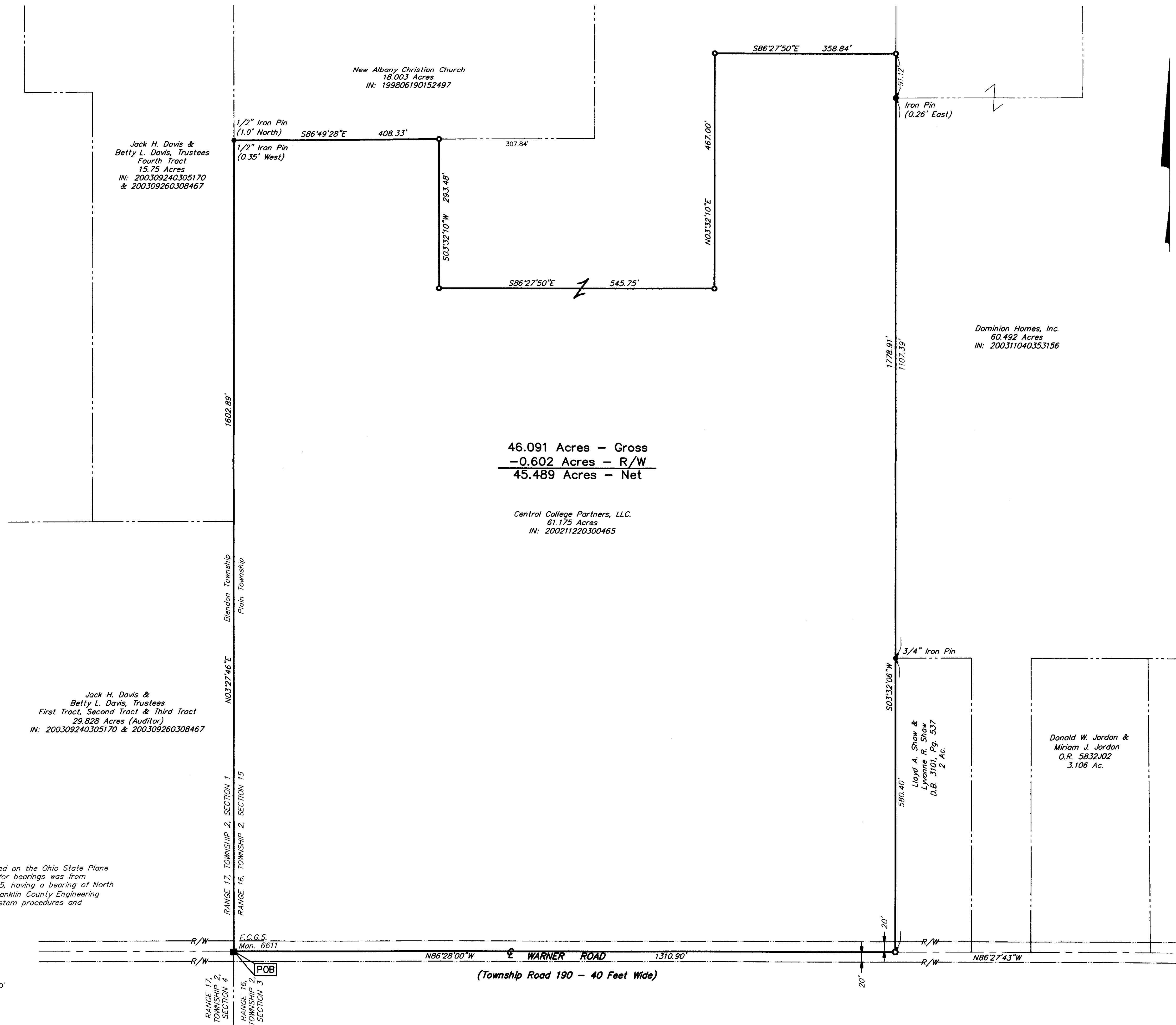


SURVEY OF ACERAGE PARCEL
SECTION 15, TOWNSHIP 2 NORTH, RANGE 16 WEST
UNITED STATES MILITARY DISTRICT
CITY OF COLUMBUS, FRANKLIN COUNTY, OHIO

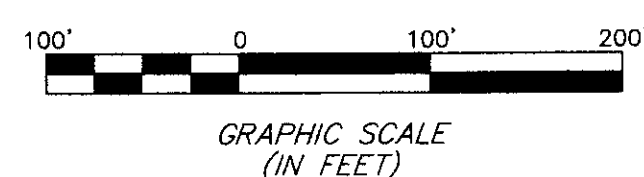


46.091 Acres - Gross
 -0.602 Acres - R/W
 45.489 Acres - Net

Central College Partners, LLC.
 61.175 Acres
 IN: 200211220300465

Jack H. Davis &
 Betty L. Davis, Trustees
 First Tract, Second Tract & Third Tract
 29.828 Acres (Auditor)
 IN: 200309240305170 & 200309260308467

BASIS OF BEARINGS: Bearings are based on the Ohio State Plane Coordinate System per NAD83. Control for bearings was from coordinates of monuments 8824 & 8825, having a bearing of North 86° 29' 28" West, established by the Franklin County Engineering Department, using Global Positioning System procedures and equipment.



RECEIVED
 SEP 10 2004
 Franklin County Engineer
 Dean C. Ringle, PE, PS.

- = STONE FND.
 - = MON. FND.
 - = I.P. FND.
 - = I.P. SET
 - = MAG. NAIL FND.
 - = MAG. NAIL SET
 - ▲ = R.R. SPK. FND.
 - ▲ = R.R. SPK. SET
 - = P.K. NAIL FND.
- I.P. Set are 13/16" I.D. iron pipe with cap inscribed EMHT INC



By: *Robert L. Clay* September 9, 2004
 Professional Surveyor No. 8127

		Date: September 9, 2004
ENGINEERS, SURVEYORS, PLANNERS, SCIENTISTS EVANS, MECHWART, HAMBLETON & TILTON, INC. 170 MILL STREET GAHANNA, OHIO 43230 TELEPHONE (614) 471-5150 FACSIMILE (614) 471-9286		Scale: 1" = 100'
		Job No: 2004-1630
		Sheet: 1 of 1
REVISIONS		
MARK	DATE	DESCRIPTION

I:\CAMDATA\1\SURVEY\PROJECT\2004\1630\DWG\20041630AS.DWG 24/36 LANSCHAPES - NO WRETS - PLOTTED BY: JPOWELL - THURSDAY, SEP 9 2004 - 10:36:52 AM