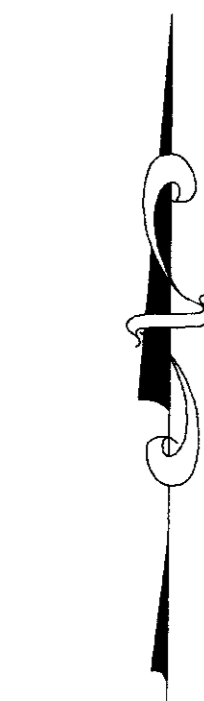


SURVEY OF ACREAGE PARCEL
SECTION 4, TOWNSHIP 2, RANGE 17
UNITED STATES MILITARY LANDS
CITY OF COLUMBUS, FRANKLIN COUNTY, OHIO



STATE ROUTE 161

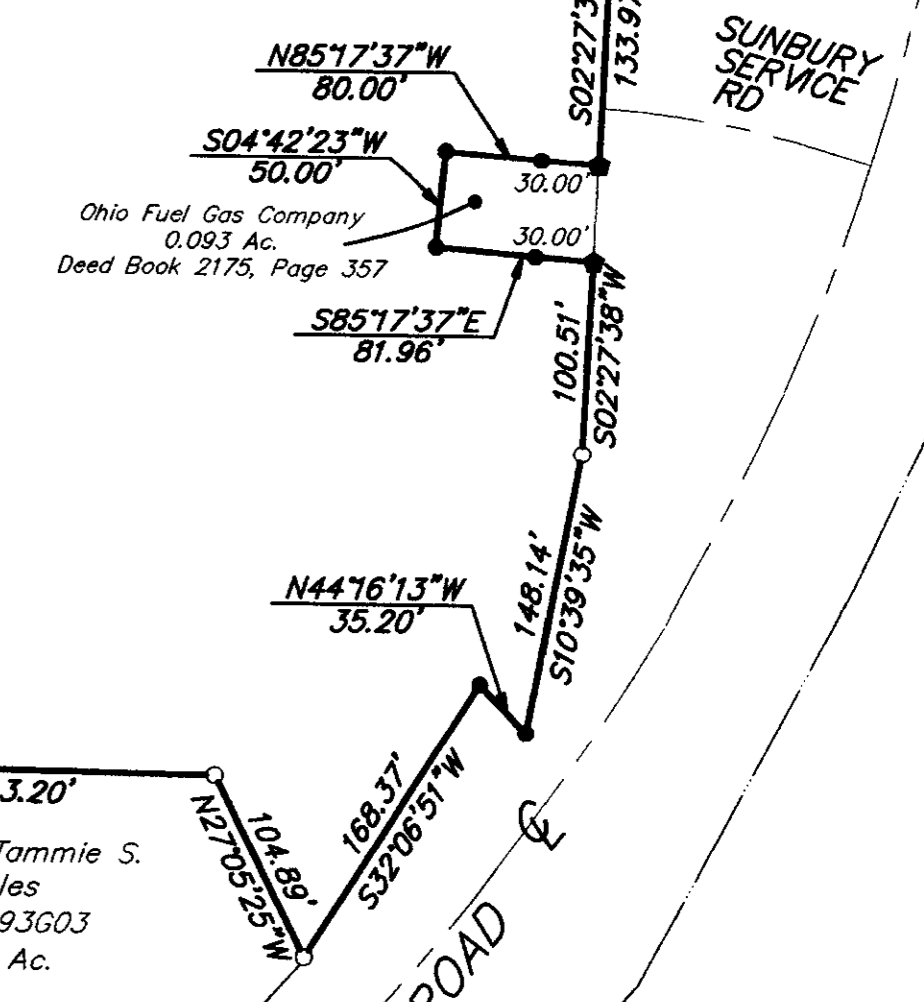
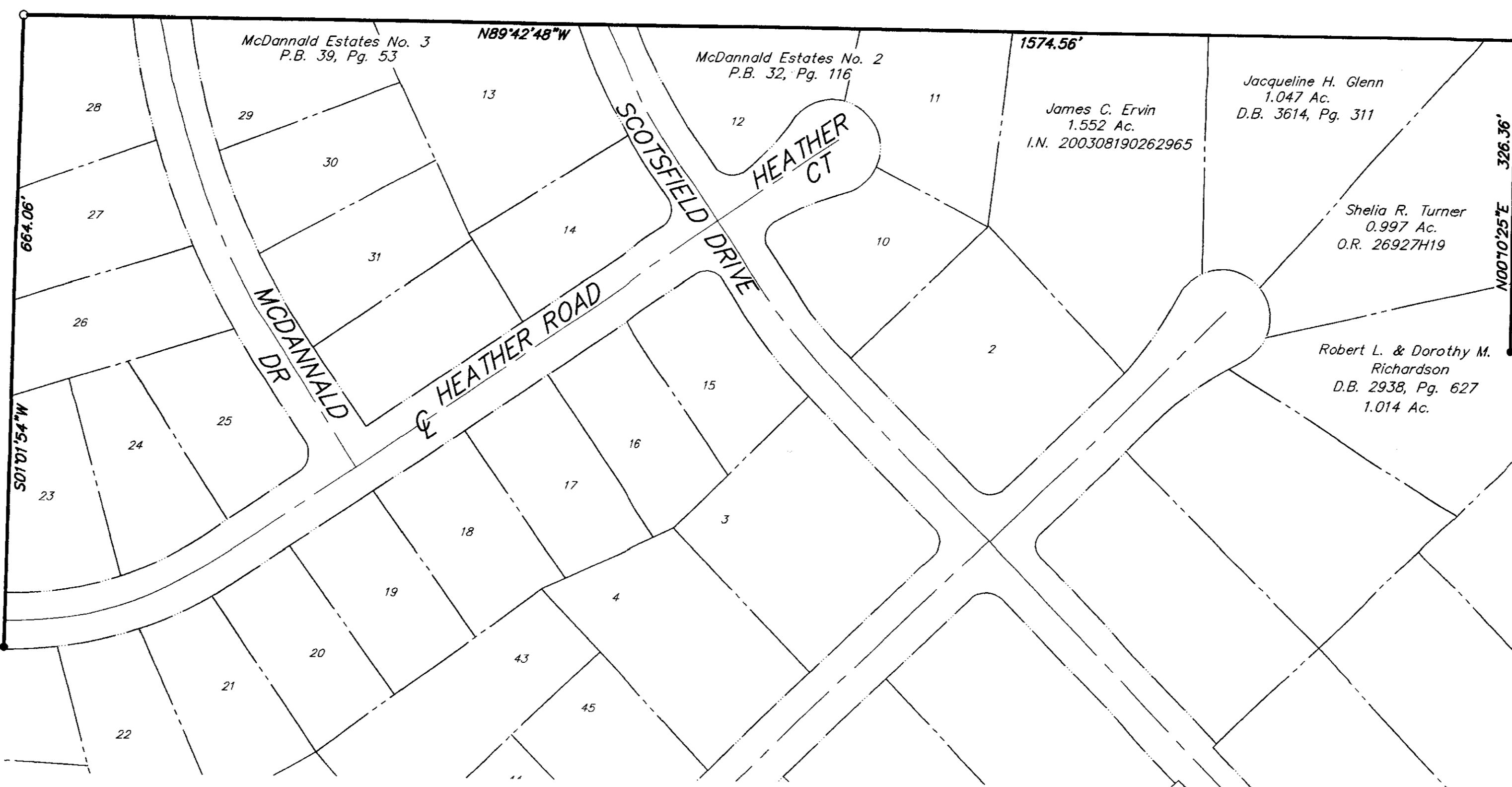
The State of Ohio
13,048 Ac.
Official Record 31923 108

RECEIVED
JAN 02 2004
Franklin County Engineer
Dean C. Ringle, P.E., P.S.

ASP Columbus Development, L.L.C.
74.3896 Ac.
Instrument No. 199812020310563

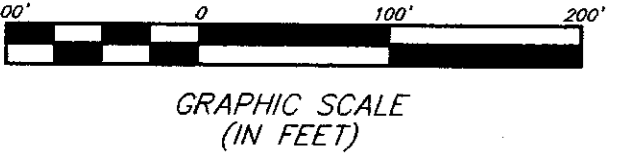
74.310 Ac.

INTERSTATE 270



- = STONE FND.
- = MON. FND.
- = I.P. FND.
- = I.P. SET
- = MAG. NAIL FND.
- = MAG. NAIL SET
- ▲ = R.R. SPK. FND.
- ▲ = R.R. SPK. SET
- = P.K. NAIL FND.

I.P.S. Set are 13/16" I.D. Iron pipe w/ cap inscribed EMHT INC



BASIS OF BEARINGS: Bearings are based on the Ohio State Plane Coordinate System as per NAD83. Control for bearings was from monuments N 106-94 & IN 107-94, as established and published by the Franklin County Engineering Department, using Global Positioning System procedures and equipment.

Surveyed & Prepared By
EMHT INC.
ENGINEERS, SURVEYORS, PLANNERS, SCIENTISTS
EVANS, MECHWART, HAMBLETON & TILTON, INC.
170 MILL STREET, GAHANNA, OHIO 43230-3036
TEL: 614-471-5150 • FAX: 614-471-9286

By *James M. Pearsall* 12/30/03
Professional Surveyor No. 7840

STATE OF OHIO
JAMES M. PEARSALL
7840
REGISTERED
PROFESSIONAL SURVEYOR

SCALE: 1" = 100'
DECEMBER 30, 2003