

SUPPLEMENT TO EXHIBIT "A"

85-857200

**RECEIVED**

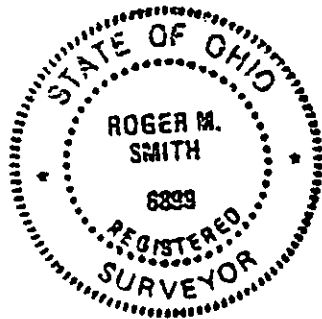
MAR 12 2004

Franklin County Engineer  
Dean C. Ringle, P.E., P.S.

City of Columbus

D. B. 1716 PG. 58

31.096 Ac.



City of Columbus

D. B. 1697 PG. 258

54.718 Ac.

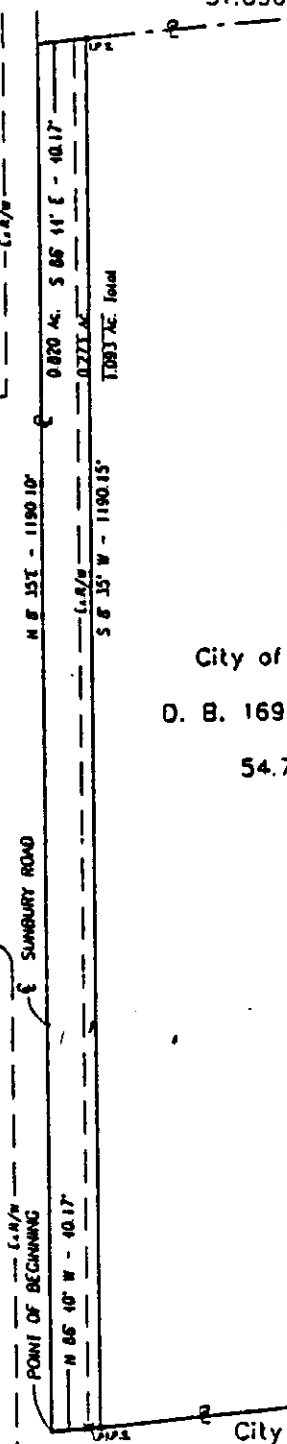
GOLDSMITH DRIVE

SUNBURY ROAD

*Roger M. Smith*

ROGER M. SMITH  
OHIO REGISTERED SURVEYOR  
S-6899

- △ RAILROAD SPIKE FOUND
- IRON PIN FOUND
- x IRON PIN CALL
- IRON PIN PROPOSED



City of Columbus

D. B. 1718 PG. 466

25.718 Ac.

O-2-C  
BLENDON TRUP

PROJECT	SUNBURY ROAD	JOB NO.	9063100
SUBJECT	PROPERTY PLAT	DATE	04-21-98
BY	CTM	CHECKED	RMS
		SHEET NO.	1 OF 1

**URS**  
URS CONSULTANTS  
ARCHITECTS • ENGINEERS • PLANNERS