

SURVEY OF ACREAGE PARCELS
QUARTER TOWNSHIP 4, TOWNSHIP 2, RANGE 16
UNITED STATES MILITARY LANDS
VILLAGE OF NEW ALBANY, FRANKLIN COUNTY, OHIO



LEGEND	
	= Flag Pole
	= Utility Pole
	= Guy Wire w/Anchor
	= Light pole
	= Yard Light
	= Gas Marker Post
	= Gas Service
	= Sign
	= Ballard
	= Electric Outlet
	= Electric Transformer
	= Air Condition Unit
	= Water Valve
	= Fire Hydrant
	= Telephone Marker Post
	= Telephone Pedestal
	= Telephone Manhole
	= Catch Basin
	= Storm Sewer Surface Inlet
	= Woven Wire Fence
	= Chain Link Fence
	= Centerline
	= Right of Way Line

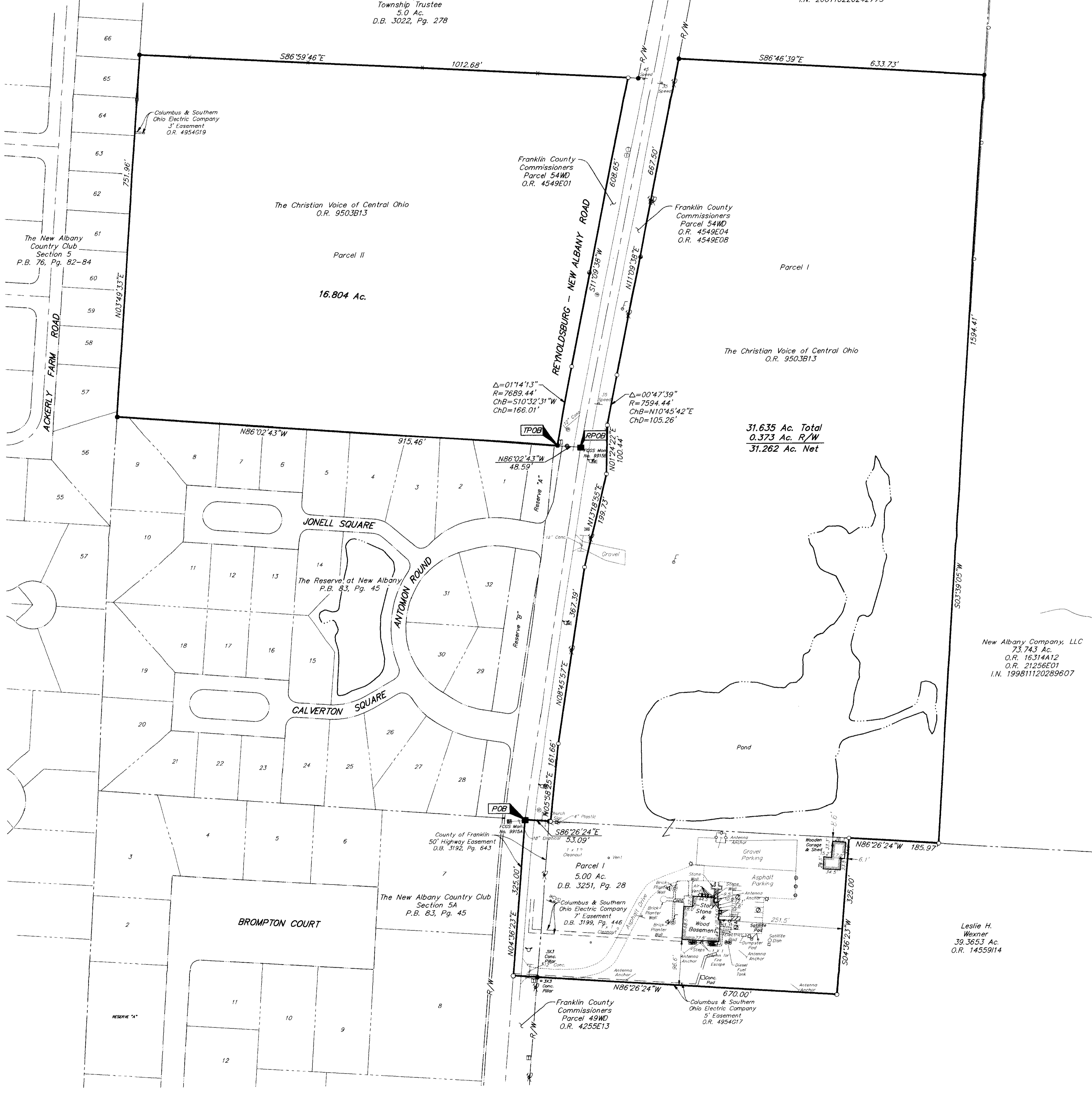
RECEIVED

OCT 14 2003

Franklin County Engineer:
 Dean C. Ringle, PE, PS.

Plain Township Board of
 Township Trustee
 5.0 Ac.
 D.B. 3022, Pg. 278

New Albany Company, LLC
 4.999 Ac.
 I.N. 200110220242773



31.635 Ac. Total
0.373 Ac. R/W
31.262 Ac. Net

New Albany Company, LLC
 73.743 Ac.
 O.R. 16314A12
 O.R. 21256E01
 I.N. 199811120289607

Leslie H.
 Wexner
 39.3653 Ac.
 O.R. 14559114

The following items from Title Commitment No. 120035028 are not located on the subject parcels:
 D.B. 1746, Pg. 108
 D.B. 1656, Pg. 23
 D.B. 735, Pg. 419

UTILITY STATEMENT:
 The utilities shown hereon have been located from field survey information and existing drawings. The surveyor makes no guarantee that the utilities shown comprise all such utilities in the area, either in service or abandoned. The surveyor further does not warrant that the utilities shown are in the exact location indicated although he does certify that they are located as accurately as possible from information available.

According to the Federal Emergency Management Agency's Flood Insurance Map (dated August 2, 1995), the subject parcel shown hereon lies within Zone X (areas determined to be outside 500-year flood plain), Community Panel No. 39049C0183C.

BASIS OF BEARINGS: Bearings are based on the Ohio State Plane Coordinate System as per NA083. Control for bearings was from coordinates of monuments 9915B & 9915A, having a bearing of North 08° 45' 57" East, established by the Franklin County Engineering Department, using Global Positioning System procedures and equipment.

The subject tracts are located within those areas as described by the following items from Title Commitment No. 120035028: (Parcels I & II)
 Sinclair Refining Company
 Blanket Pipeline Easement
 D.B. 1064, Pg. 300
 Assigned to Ohio River Pipe Line Company in D.B. 190, Pg. 451

The following item from Title Commitment No. 120035028 can not be positively located from the description provided:
 D.B. 1079, Pg. 304

The subject tract is located within those areas as described by the following items from Title Commitment No. 120035028: (5.00 Ac. Tract)
 Ohio Fuel Gas Company
 Blanket Pipeline Easement
 M.R. 4, Pg. 168
 M.R. 11, Pg. 273
 Assigned to Columbia Gas of Ohio, Inc. in D.B. 2548, Pg. 90
 North Western Ohio Natural Gas Company
 Blanket Pipeline Easement
 D.B. 323, Pg. 144
 Assigned to Columbia Gas of Ohio, Inc. in D.B. 2548, Pg. 90

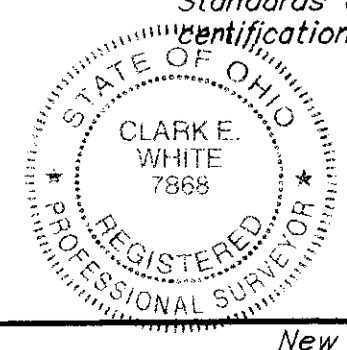
Surveyed & Prepared
 By

 ENGINEERS, SURVEYORS, PLANNERS, SCIENTISTS
 EVANS, MECHWART, HAMBLETON & TILTON, INC.
 170 MILL STREET, GAHANNA, OHIO 43230-3036
 TEL: 614-471-5150 • FAX: 614-471-9286

CERTIFICATION: Commitment No. 120035028
 To: The New Albany Company & Stewart Title Guaranty Company

This is to certify, to the best of my knowledge, information and belief, that this map and the survey on which it is based were made in accordance with "Minimum Standard Detail Requirements for ALTA/ACSM and NSPS in 1999," and included items 1, 3, 4, 7(a), 8, 9, 10, 11(a) & 13 of Table A "Optional Survey Responsibilities & Specification" thereof, and pursuant to the Accuracy Standards as adopted by ALTA, ACSM & NSPS in effect on the date of this certification.

By
 CLARK E. WHITE
 Professional Surveyor No. 7868



SCALE: 1" = 100' OCTOBER 13, 2003

G:\PROJECTS\2003\1431\DWG\31431A51.DWG - O. PREPARED BY: MOORE - October 10, 2003 - 8:24 AM

Note:
 Zoning information was not made available to the undersigned as of the date of this survey.

- = STONE FND.
 - = MON. FND.
 - = I.P. FND.
 - = I.P. SET
 - = MAG. NAIL FND.
 - = MAG. NAIL SET
 - ▲ = R.R. SPK. FND.
 - ▲ = R.R. SPK. SET
 - = P.K. NAIL FND.
- I.P.S. Set are 1 3/16" I.D. Iron pipe w/ cap inscribed EMHT, INC



GRAPHIC SCALE
 (IN FEET)