



ENGINEERS, SURVEYORS, PLANNERS, SCIENTISTS

EVANS, MECHWART, HAMBLETON & TILTON, INC.
170 MILL STREET, GAHANNA, OHIO 43230
TELEPHONE (614) 471-5150 - FACSIMILE (614) 471-9286

RIGHT-OF-WAY TAKE

QUARTER TOWNSHIP 3, TOWNSHIP 2, RANGE 16
UNITED STATES MILITARY LANDS
VILLAGE OF NEW ALBANY, FRANKLIN COUNTY, OHIO

Date: August 3, 2004

Job No. 20030933

Scale: 1" = 100'

RECEIVED

AUG 06 2004

Franklin County Engineer
Dean C. Ringle, P.E., P.S.

Richard A. Winnestaffer
I.N. 199910050250409
10.039 Ac.

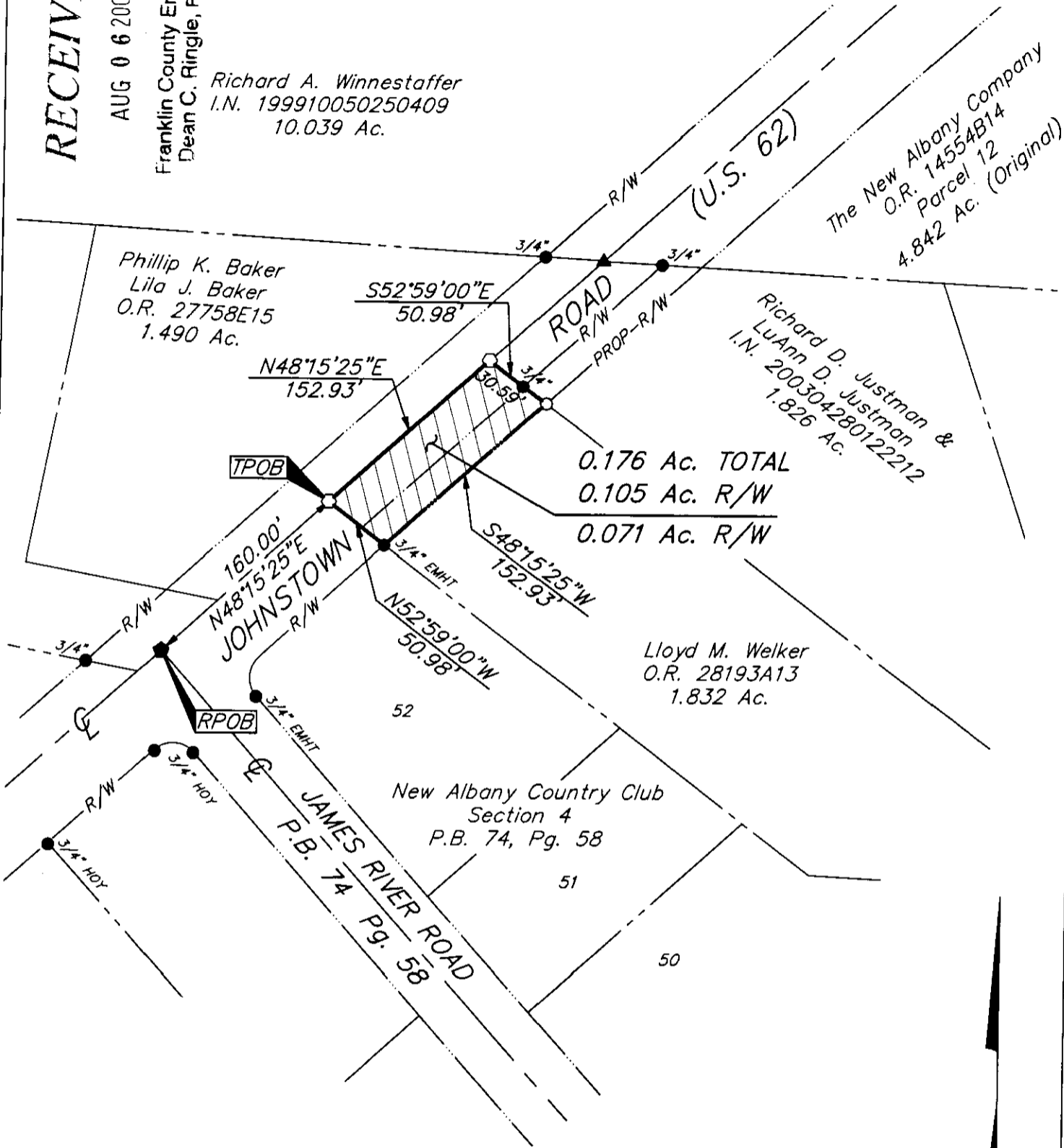
The New Albany Company
O.R. 14554B14
Parcel 12
4.842 Ac. (Original)

Phillip K. Baker
Lila J. Baker
O.R. 27758E15
1.490 Ac.

Richard D. Justman &
LuAnn D. Justman
I.N. 200304280122212
1.826 Ac.

0.176 Ac. TOTAL
0.105 Ac. R/W
0.071 Ac. R/W

Lloyd M. Welker
O.R. 28193A13
1.832 Ac.



- = STONE FND.
- = MON. FND.
- = I.P. FND.
- = I.P. SET
- = MAG. NAIL FND.
- = MAG. NAIL SET
- ▲ = R.R. SPK. FND.
- △ = R.R. SPK. SET
- ◆ = P.K. NAIL FND.

I.P. Set are 13/16" I.D. iron pipe with cap inscribed EMHT INC

BASIS OF BEARINGS: Bearings are based on the same as shown on the recorded plat of "New Albany Country Club Section 15E," P.B. 97 Pg. 77 in which a portion of the centerline of Harlem Road bears North 21° 09' 57" West.



08/05/04

By John C. Dugan
Professional Surveyor No. 8069



GRAPHIC SCALE (IN FEET)

\\CMHDATA1\SURVEY\PROJECT\20030933\DWG\30933BV4.DWG<LEGAL PORTRAIT> - NO XREFS - PLOTTED BY: JBUSHBY - TUESDAY, AUG 3 2004 - 3:08:09 PM