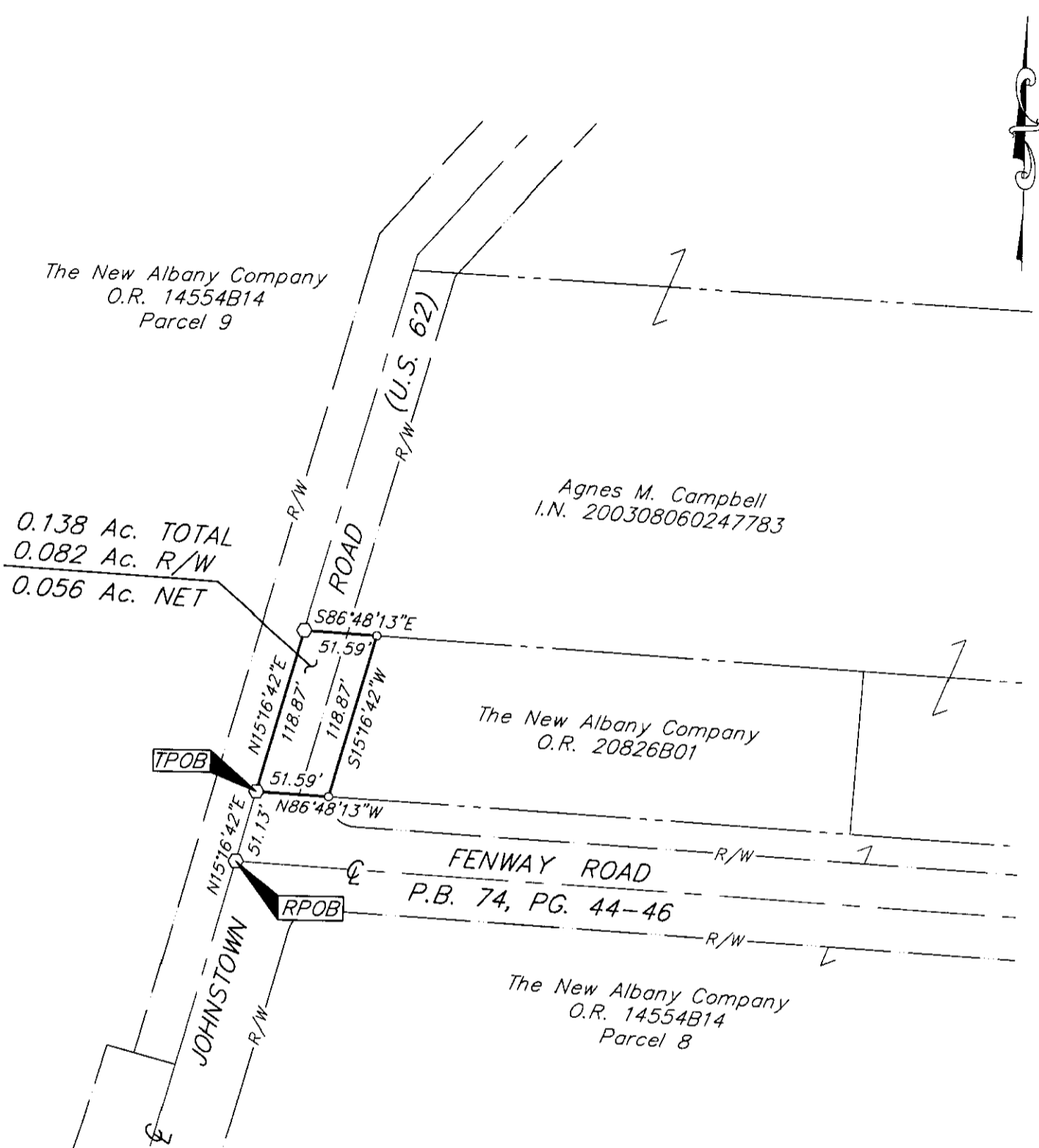


SURVEY OF ACREAGE PARCEL
 LOCATED IN
 QUARTER TOWNSHIP 3, TOWNSHIP 2, RANGE 16
 UNITED STATES MILITARY LANDS
 VILLAGE OF NEW ALBANY, FRANKLIN COUNTY, OHIO

SCALE 1" = 100'

NOVEMBER 26, 2003

82602525



BASIS OF BEARINGS: Bearings are based on the same meridian as the bearings shown on the recorded plat of "New Albany Country Club Section 15E," Plat Book 97, Pages 77-78, Recorder's Office, Franklin County, Ohio.

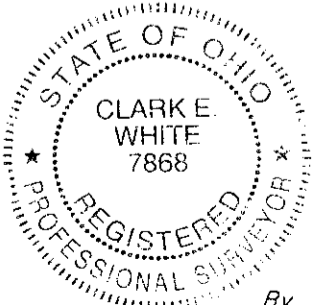
- = STONE FND.
- = MON. FND.
- = I.P. FND.
- = I.P. SET
- = MAG. NAIL FND.
- = MAG. NAIL SET
- ▲ = R.R. SPK. FND.
- △ = R.R. SPK. SET
- ◆ = P.K. NAIL FND.

I.P.S Set are 13/16" I.D. Iron pipe W/ cap inscribed EMHT INC

RECEIVED

DEC 01 2003

Franklin County Engineer
 Dean C. Ringle P.E., P.S.



By *Clark E. White*
 Professional Surveyor No. 7868



GRAPHIC SCALE
 (IN FEET)

Plan
 Trip
 O-75-F