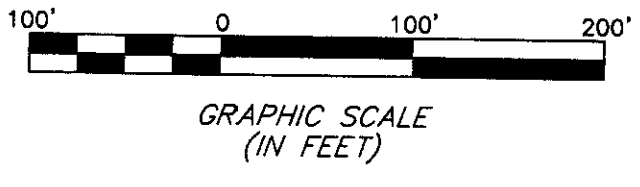
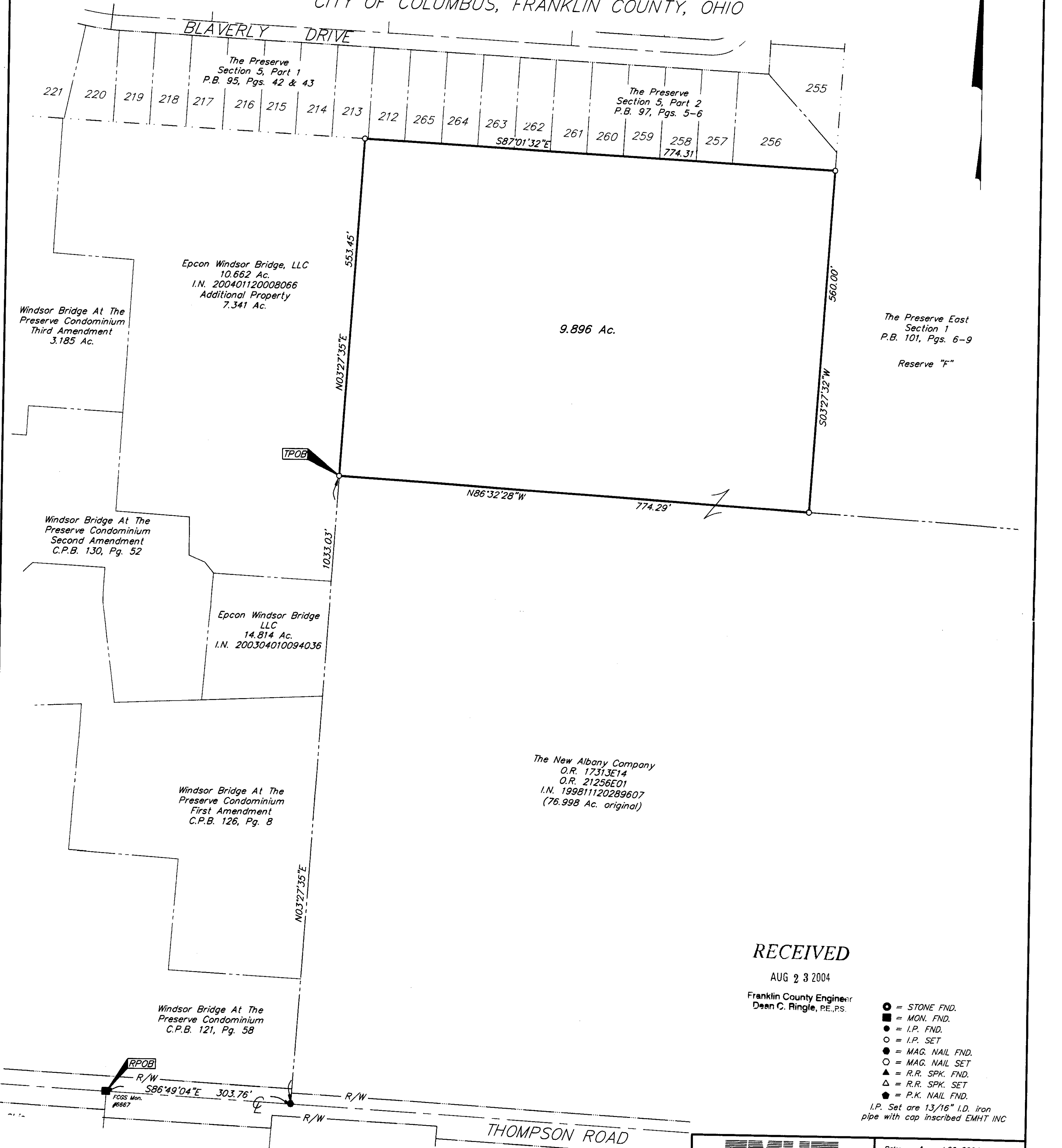
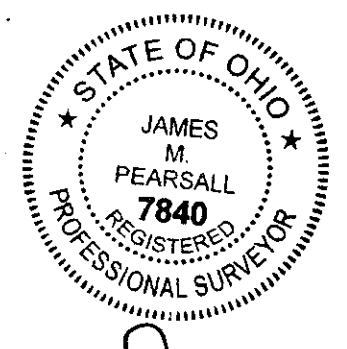


BOUNDARY SURVEY
QUARTER TOWNSHIP 3, TOWNSHIP 2, RANGE 16
UNITED STATES MILITARY LANDS
CITY OF COLUMBUS, FRANKLIN COUNTY, OHIO



BASIS OF BEARINGS: Bearings are based on the Ohio State Plane Coordinate System as per NAD83. Control for bearings was from coordinates of monuments FCGS 6666 & FCGS 6667, with the centerline of Thompson Road being South 86° 49' 04" East, as established by the Franklin County Engineering Department, using Global Positioning System procedures and equipment.



By: *James M. Pearsall* 8/20/04
 Professional Surveyor No. 7840

RECEIVED

AUG 23 2004
 Franklin County Engineer
 Dean C. Ringle, PE., PS.

- = STONE FND.
 - = MON. FND.
 - = I.P. FND.
 - = I.P. SET
 - = MAG. NAIL FND.
 - = MAG. NAIL SET
 - ▲ = R.R. SPK. FND.
 - △ = R.R. SPK. SET
 - ◆ = P.K. NAIL FND.
- I.P. Set are 13/16" I.D. iron pipe with cap inscribed EMHT INC

 ENGINEERS, SURVEYORS, PLANNERS, SCIENTISTS EVANS, MECHWART, HAMBLETON & TILTON, INC. 170 MILL STREET GAHANNA, OHIO 43230 TELEPHONE (614) 471-5150 FACSIMILE (614) 471-9286		Date: August 20, 2004
		Scale: 1" = 100'
		Job No: 2004-1198
		Sheet: 1 of 1
REVISIONS		
MARK	DATE	DESCRIPTION