

BAUER, DAVIDSON & MERCHANT, INC.

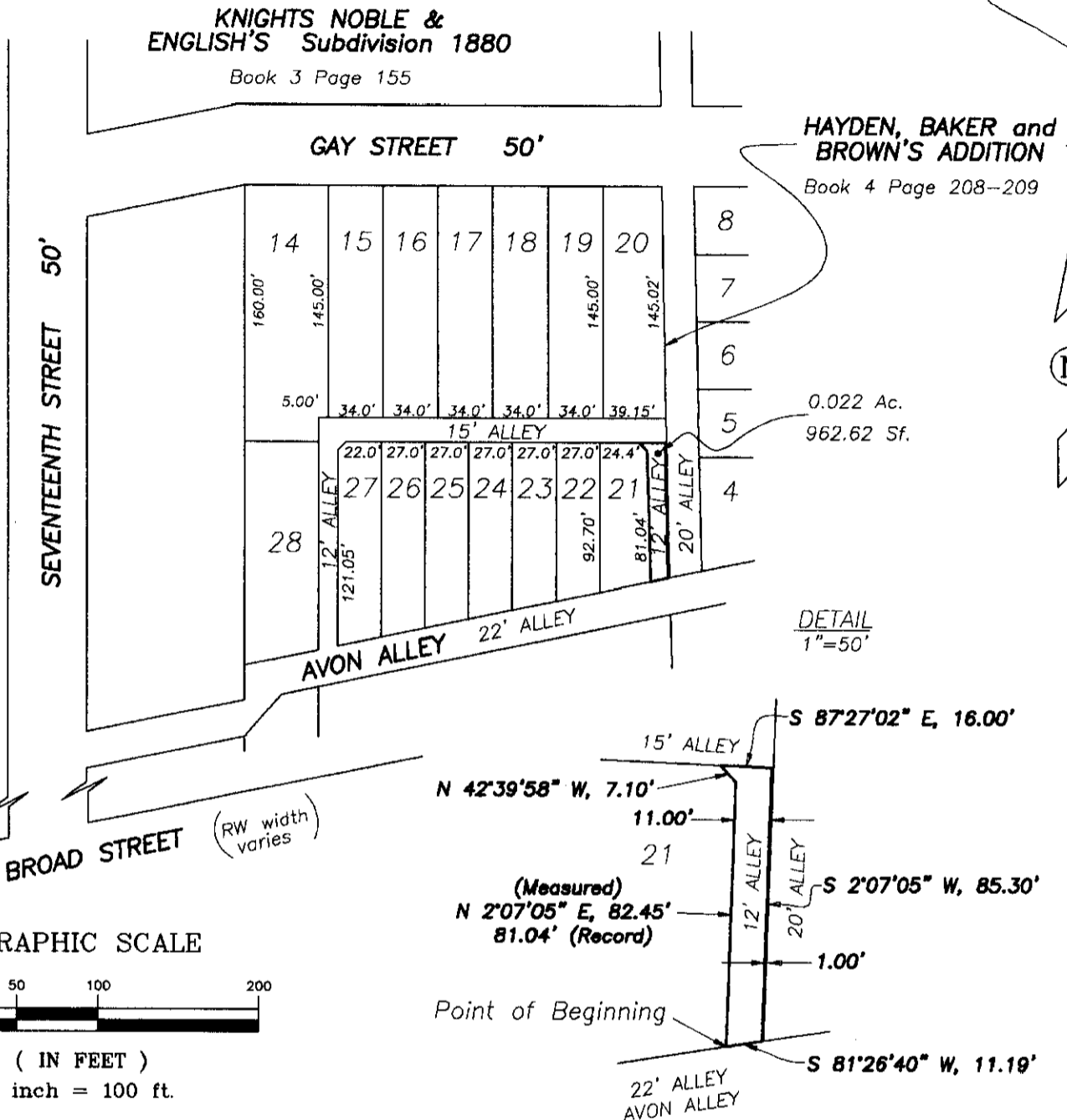
CONSULTING ENGINEERS

255 GREEN MEADOWS DRIVE SOUTH WESTERVILLE, OHIO 43081

PHONE: 614-846-3393

FAX: 614-846-4575

EXHIBIT OF PARTIAL ALLEY VACATION OF A 0.022 ACRE (962.62 SF.) TRACT OF LAND LOCATED SOUTH OF GAY STREET, EAST OF SEVENTEENTH STREET, AND NORTH OF BROAD STREET, IN THE CITY OF COLUMBUS, COUNTY OF FRANKLIN, STATE OF OHIO



Situated in the State of Ohio, County of Franklin, City of Columbus, containing 0.022 acres (962.62 square feet) of land, more or less, said 0.022 acres being part of a 12 feet alley as delineated upon the recorded plat of KNIGHT, NOBLE, & ENGLISH SUBDIVISION 1880, of record in Plat Book 3, Page 155, of record in the Recorder's Office, Franklin County, Ohio, more fully described as follows:

Beginning at the southeast corner of Lot 21 of said KNIGHT, NOBLE, & ENGLISH SUBDIVISION 1880;

Thence N 02°07'05" E, along the easterly line of Lot 21, a distance of 82.45 feet to a point;

Thence N 42°39'58" W, along said easterly line, a distance of 7.10 feet to a point;

Thence, S 87°27'02" E, with the prolongation of the northerly line of said Lot 21, a distance of 16.00 feet to a point 1.00 feet west as measured at right angles, with the easterly line of said KNIGHTS, NOBLE, & ENGLISH SUBDIVISION 1880, also being the westerly line of HAYDEN, BAKER, AND BROWN'S ADDITION, of record in Plat Book 3, Page 155, of record in the Recorder's Office, Franklin County, Ohio;

Thence S 02°07'05" W, parallel with and 1.00 feet west as measured at right angles, with the easterly line of said KNIGHTS NOBLE & ENGLISH SUBDIVISION 1880, and said westerly line of HAYDEN, BAKER, AND BROWN'S ADDITION, a distance of 85.30 feet to a point in the prolongation of the southerly line of said Lot 21;

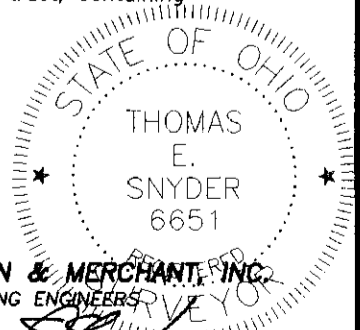
Thence, S 81°26'40" W, along said line, a distance of 11.19 feet to the point of beginning of said tract, containing 0.022 acres (962.62 square feet), more or less.

The bearings for this description are based on the bearing N 02°07'05" E, assumed, for the easterly line of said Lot 21.

RECEIVED

JAN 07 2004

Franklin County Engineer
Dean [Signature], P.E., P.S.



BAUER, DAVIDSON & MERCHANT, INC.
CONSULTING ENGINEERS

BY *Thomas E. Snyder*
Thomas E. Snyder
Professional Surveyor No. 6651

12-10-03

SCALE: 1"=100'
December 10, 2003
ORDER NO. 415903

DWG/41593alleyb

ID #07

H-67
Columbus

83357150