

**EXHIBIT A**

SUBJECT TO THE FOLLOWING AS DETERMINED BY CHESTER WILLCOX & SABLE LLP, AS SHOWN:

EX. SEWER EASEMENT

VOL. 2464, PAGE 451 AND OR 07278, PAGE A01

EX. PARTY WALL AGREEMENT

COULD NOT BE LOCATED

CURVE TABLE - TRACT 1					
CURVE	RADIUS	LENGTH	CH. BRG.	CHORD	DELTA
C1	14.00'	21.90'	S36°43'57"W	19.74'	89°37'43"
C2	58.00'	78.63'	S30°45'21"W	72.74'	77°40'30"
C3	1262.44'	341.55'	N27°52'46"W	340.51'	15°30'04"

CURVE TABLE - TRACT 2					
CURVE	RADIUS	LENGTH	CH. BRG.	CHORD	DELTA
C1	1262.44'	364.57'	N10°33'40"E	363.31'	16°32'46"
C2	58.00'	70.29'	S42°45'21"E	66.06'	69°25'59"
C3	14.00'	22.06'	S53°11'03"E	19.85'	90°17'22"

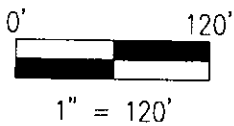
LINE TABLE - TRACT 1		
LINE	BEARING	LENGTH
L1	S82°09'28"W	13.91'
L2	S07°50'32"E	7.54'
L3	S82°09'28"W	14.81'
L4	N06°01'52"W	0.43'
L5	S81°55'24"W	52.72'
L6	S08°09'46"E	4.34'
L7	S81°50'14"W	3.08'
L8	S08°09'46"E	50.12'
L9	S08°04'54"E	24.35'
L10	S69°35'36"W	11.71'
L11	N81°47'29"E	270.52'
L12	S08°09'46"E	162.03'

LINE TABLE - TRACT 2		
LINE	BEARING	LENGTH
L1	S08°09'46"E	161.79'
L2	S81°50'31"W	265.78'
L3	S77°28'21"E	14.08'
L4	S08°02'22"E	49.81'
L5	S08°09'46"E	47.47'
L6	N81°50'14"E	2.83'
L7	S08°09'46"E	4.44'
L8	N81°53'15"E	24.65'
L9	N05°22'21"W	0.53'
L10	N81°57'20"E	44.42'
L11	S08°09'46"E	7.62'
L12	N81°50'31"E	12.61'

**RECEIVED**

APR 22 2004

Franklin County Engineer  
Dean C. Ringle, P.E., P.S.



**SOURCES OF INFORMATION:**

INLOTS TO CITY OF COLUMBUS  
- PLAT BOOK 14, PAGE 27

60 SCALE PLOT SHEETS 1-3 AND 1-6  
- ON FILE AT THE CITY OF COLUMBUS ENGINEER'S OFFICE

DEED BOOK, PAGES: 910-426, 910-427, 910-472, 932-294, 941-114, 941-197, 941-290, 941-291, 941-377, 941-506, 942-122, 942-179, 942-344, 942-485, 946-652, 948-35, 948-42, 948-595, 950-421, 950-422, 950-451, 951-313, 951-315, 951-406, 952-299, 953-101, 953-97, 957-640, 958-598, 961-186, 963-355, 963-448, & 965-83

VACATED ORDINANCES AS SHOWN ON THIS PLAT

**BASIS OF BEARINGS:**

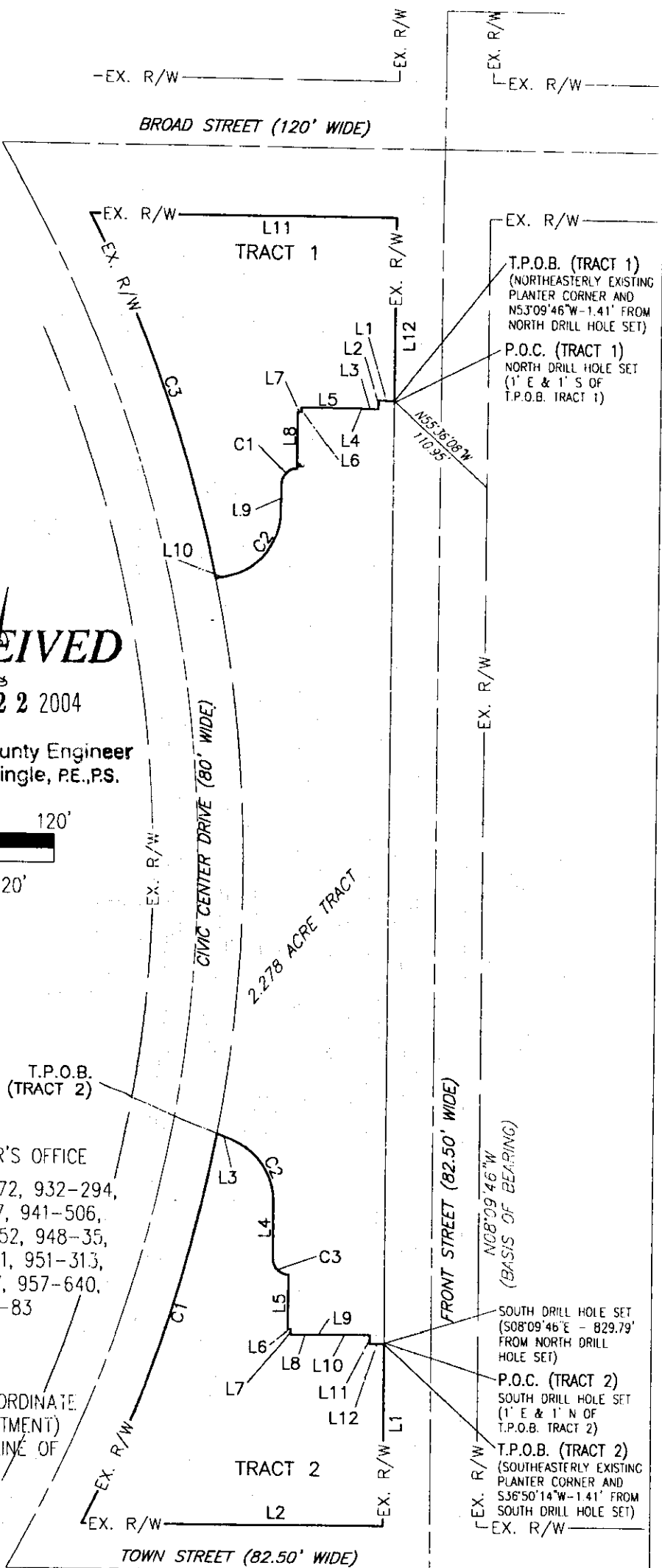
BEARINGS ARE BASED ON THE STATE PLANE COORDINATE SYSTEM OHIO SOUTH ZONE, NAD83 (1986 ADJUSTMENT) AND ON THE EASTERLY EXISTING RIGHT OF WAY LINE OF FRONT STREET, BEING N08°09'46"W.



I HEREBY CERTIFY THAT THIS PLAT IS BASED ON AN ACTUAL FIELD SURVEY PERFORMED BY COLUMBUS ENGINEERING CONSULTANTS IN OCTOBER 2003.

STEVEN L. LAMPHEAR  
P.S. No 7876

DATE



**LEGEND**

P.O.C. - POINT OF COMMENCEMENT  
T.P.O.B. - TRUE POINT OF BEGINNING

COLUMBUS ENGINEERING CONSULTANTS, INC.

Consulting Civil Engineers  
840 Michigan Avenue  
Columbus, OH 43215  
TEL (614) 228-3500 FAX (614) 228-3519

P:\PRC\9128\PROPERTY-SPLIT-EXHIBIT\_A\TRACT1&2.DWG

82609125

G-32