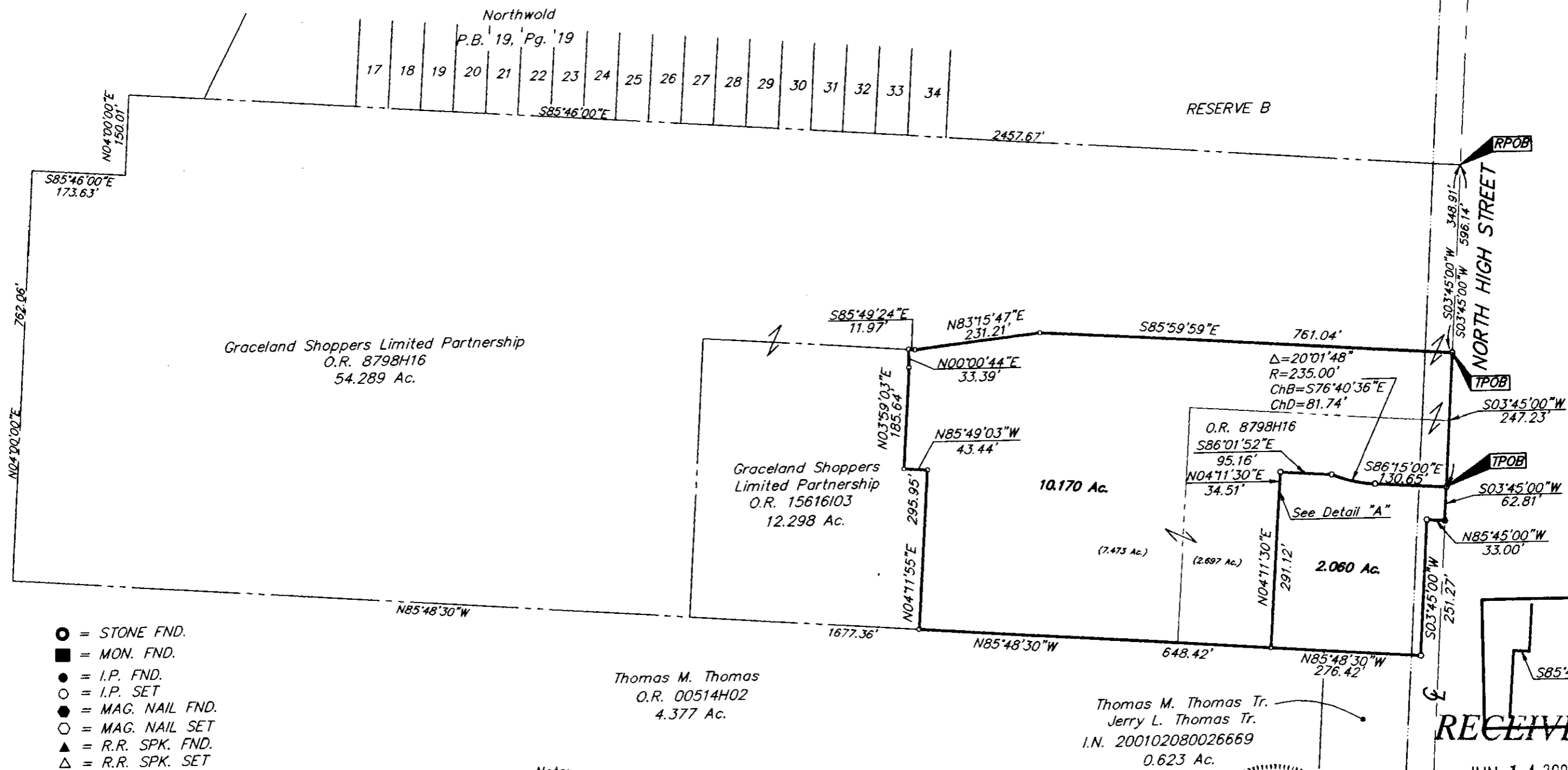


SURVEY OF ACREAGE PARCELS
LOCATED IN
FARM LOT 18, QUARTER TOWNSHIP 3, TOWNSHIP 2, RANGE 18
UNITED STATES MILITARY LANDS
CITY OF COLUMBUS, FRANKLIN COUNTY, OHIO

DECEMBER 22, 2003
Revised: May 7, 2004
Revised: June 11, 2004

SCALE 1" = 200'



- = STONE FND.
- = MON. FND.
- = I.P. FND.
- = I.P. SET
- = MAG. NAIL FND.
- = MAG. NAIL SET
- ▲ = R.R. SPK. FND.
- △ = R.R. SPK. SET
- = P.K. NAIL FND.

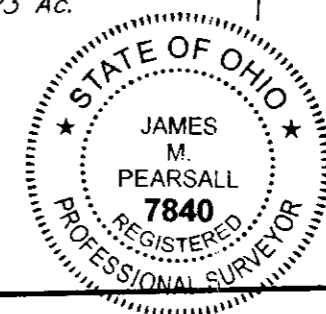
I.P.S Set are 13/16" I.D. Iron pipe W/ cap inscribed EMHT INC



GRAPHIC SCALE
(IN FEET)

Note:
Surveyed area to be demolished and new parking and buildings erected.

Basis of Bearings:
The bearings hereon are based on the same meridian as the centerline of North High Street (S 3° 45' 00" W) of record in Official Record 879H16.



By James M. Pearsall 6/11/04
Professional Surveyor No. 7840

Q:\PROJECT\20031813\DWG\31813BVDWG - PLOTTED BY BSMITH - June 11, 2004 - 12:35 PM