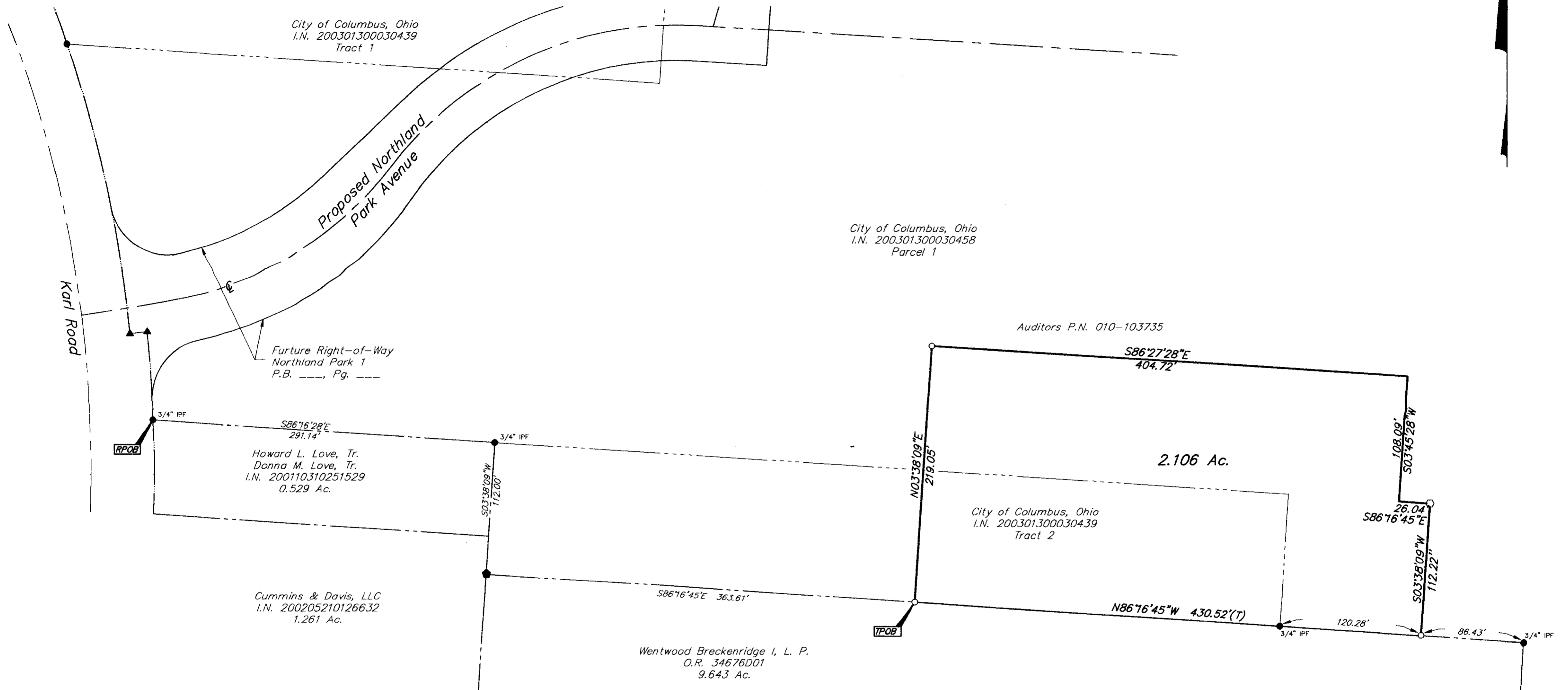
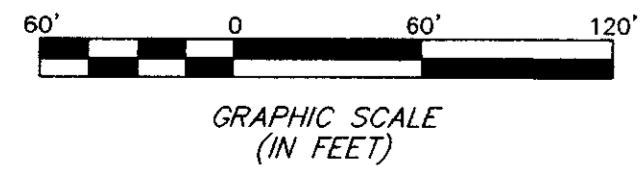


**SURVEY OF ACREAGE PARCEL**  
**QUARTER TOWNSHIP 1, TOWNSHIP 1, RANGE 18**  
**UNITED STATES MILITARY LANDS**  
**CITY OF COLUMBUS, FRANKLIN COUNTY, OHIO**



I:\CMHDATA\1\SURVEY\PROJECT\20040808\DWG\040808B\1.DWG<18X24 LANDSCAPE> - 1 XREF: 040808B\FE - PLOTTED BY: CMCKEE - FRIDAY, JUL 2 2004 - 1:37:23 PM

- = STONE FND.
  - = MON. FND.
  - = I.P. FND.
  - = I.P. SET
  - = MAG. NAIL FND.
  - = MAG. NAIL SET
  - ▲ = R.R. SPK. FND.
  - △ = R.R. SPK. SET
  - = P.K. NAIL FND.
- I.P. Set are 13/16" I.D. iron pipe with cap inscribed EMHT INC



By *James M. Pearsall* 7/2/04  
 Professional Surveyor No. 7840

**RECEIVED**

JUL 07 2004

Franklin County Engineer  
 Dawn C. Ringle, P.E.

**BASIS OF BEARINGS:** The bearings contained herein are based on the Ohio State Plane Coordinate System as per NAD83. Control for bearings was from coordinates for Franklin County Geodetic Survey Monuments CLARK and CLARK AZIMUTH, established by the Franklin County Engineering Department, using Global Positioning System procedures and equipment.

This survey was prepared through the use of existing records and an actual field survey performed by Evans, Mechwart, Hambleton & Tilton, Inc. in August 2003 and May 2004.

 ENGINEERS, SURVEYORS, PLANNERS, SCIENTISTS EVANS, MECHWART, HAMBLETON & TILTON, INC. 170 MILL STREET GAHANNA, OHIO 43230 TELEPHONE (614) 471-5150 FACSIMILE (614) 471-9286	Date: July 2, 2004	
	Scale: 1" = 60'	
	Job No: 2004-1194	
	Sheet: 1 of 1	
<b>REVISIONS</b>		
<b>MARK</b>	<b>DATE</b>	<b>DESCRIPTION</b>