

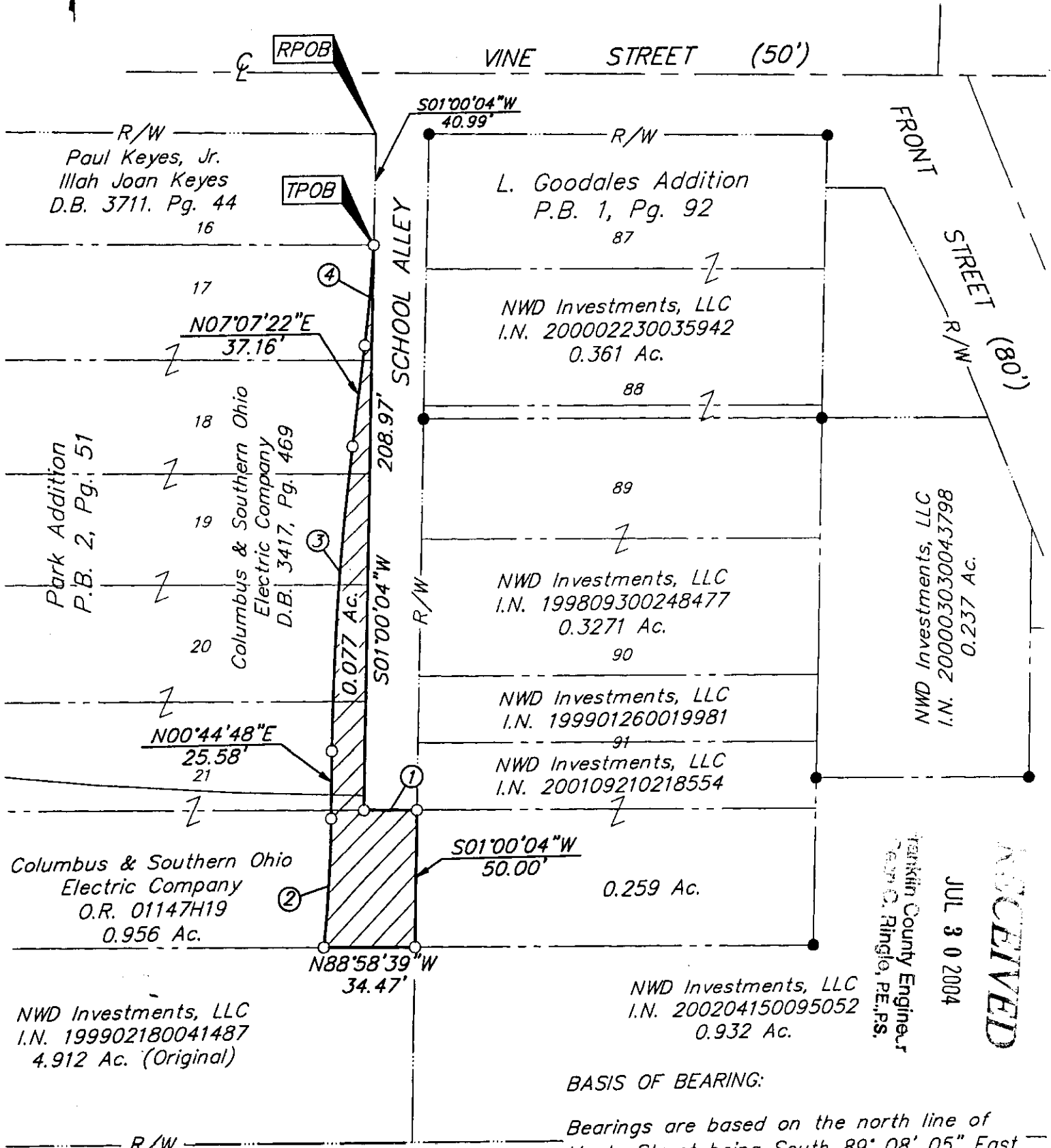
JANUARY 02, 2003

SCALE 1" = 50'

- ① S88°58'39"E
20.00'
- ② Δ=05°39'22"
R=475.50'
ChB=N03°34'29"E
ChD=46.92'
- ③ Δ=06°22'34"
R=1014.50'
ChB=N03°56'05"E
ChD=112.84'
- ④ Δ=03°05'41"
R=684.51'
ChB=N05°15'25"E
ChD=36.97'

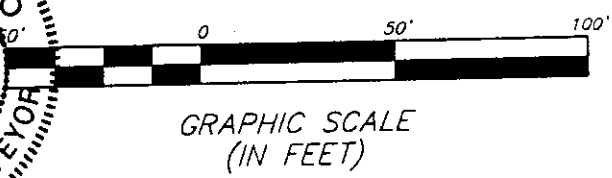
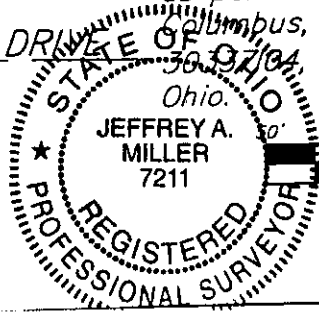
- = MON. FND.
- = I.P. FND.
- = I.P. SET
- = MAG. NAIL FND.
- = MAG. NAIL SET
- ▲ = R.R. SPK. FND.
- △ = R.R. SPK. SET
- ◆ = P.K. NAIL FND.

I.P.S Set are 13/16" I.D. Iron pipe W/ cap inscribed EMHT INC



RECEIVED
 JUL 3 0 2004
 Franklin County Engineer
 Tom O. Ringler, PE, PS.

BASIS OF BEARING:
 Bearings are based on the north line of Maple Street being South 89° 08' 05" East, as per Governor's Deed to the City, of Columbus, of record in Official Record 36, 9704, Recorder's Office Franklin County, Ohio.



By *[Signature]* 1-13-03
 Professional Surveyor No. 7211

82607125