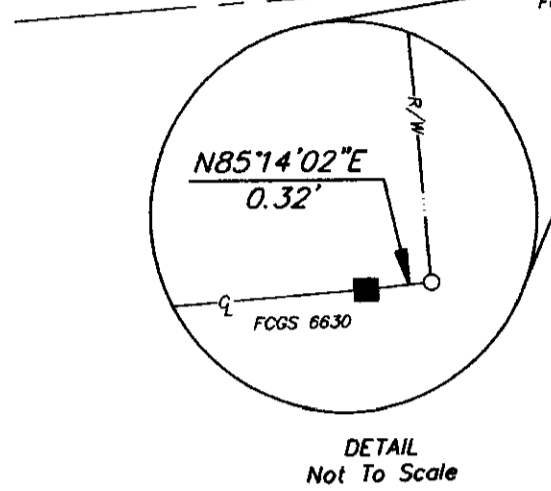


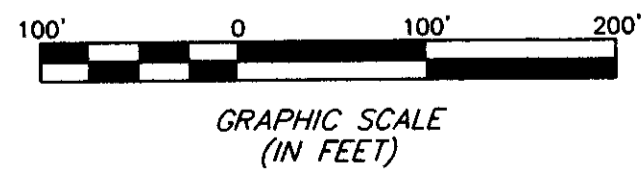
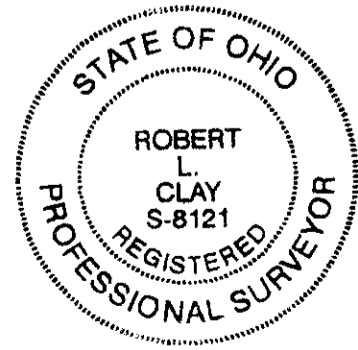
# SURVEY OF ACREAGE PARCEL VIRGINIA MILITARY SURVEY NO. 3453 CITY OF DUBLIN, FRANKLIN COUNTY, OHIO



Kurt C. & Carol G. Proegler  
4.250 Acres  
O.R. 5371113

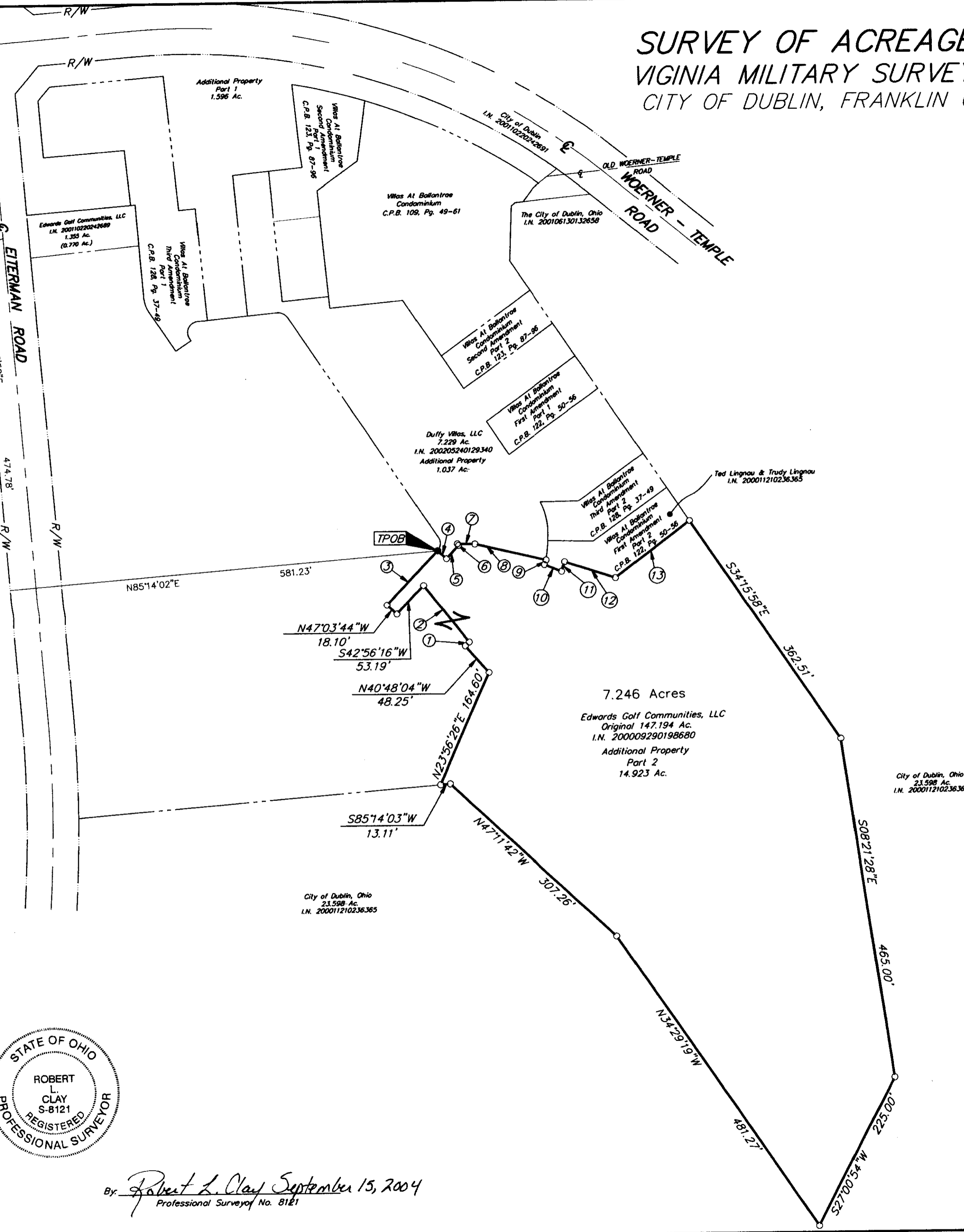
- ①  $\Delta = 05^{\circ}27'47''$   
 $R = 78.00'$   
 $ChB = N46^{\circ}28'03''E$   
 $ChD = 7.43'$   
 $Arc = 7.44'$
- ②  $N37^{\circ}59'12''W$   
 $99.97'$
- ③  $N42^{\circ}56'44''E$   
 $101.04'$
- ④  $S47^{\circ}03'44''E$   
 $16.00'$
- ⑤  $N42^{\circ}56'44''E$   
 $24.26'$
- ⑥  $N33^{\circ}51'43''W$   
 $2.71'$
- ⑦  $S88^{\circ}50'25''E$   
 $23.87'$
- ⑧  $S76^{\circ}52'53''E$   
 $99.86'$
- ⑨  $S19^{\circ}49'02''W$   
 $6.81'$
- ⑩  $S67^{\circ}57'05''E$   
 $25.00'$
- ⑪  $N17^{\circ}51'39''E$   
 $13.64'$
- ⑫  $S72^{\circ}09'43''E$   
 $73.01'$
- ⑬  $N52^{\circ}41'12''E$   
 $126.53'$

- = STONE FND.
  - = MON. FND.
  - = I.P. FND.
  - = I.P. SET
  - = MAG. NAIL FND.
  - = MAG. NAIL SET
  - ▲ = R.R. SPK. FND.
  - △ = R.R. SPK. SET
  - ◆ = P.K. NAIL FND.
- I.P. Set are 13/16" I.D. iron pipe with cap inscribed EMHT INC



By: *Robert L. Clay* September 15, 2004  
Professional Surveyor No. 8121

C:\MHDATA\1\SURVEY\PROJECT\2004\1672\DWG\141672B\1.DWG<18\24 LANDSCAPE> - 1 XREF: 20800A51 - PLOTTED BY: RCLAY - THURSDAY, SEP 16 2004 - 6:58:44 AM



**RECEIVED**  
SEP 17 2004  
Franklin County Engineer  
Dean C. Ringle, P.E., P.S.

**BASIS OF BEARINGS:**  
Bearings are based on the Ohio State Plane Coordinate System as per NAD83. Control for bearings was from coordinates of monuments 5536 & 7752, having a bearing of South 85°44' 20" East, established by the Franklin County Engineering Department, using Global Positioning System procedures and equipment.

 ENGINEERS, SURVEYORS, PLANNERS, SCIENTISTS EVANS, MECHWART, HAMBLETON & TILTON, INC. 170 MILL STREET GAHANNA, OHIO 43230 TELEPHONE (614) 471-5150 FACSIMILE (614) 471-9286		Date: September 14, 2004
		Scale: 1" = 100'
		Job No: 2004-1672
		Sheet: 1 of 1
REVISIONS		
MARK	DATE	DESCRIPTION