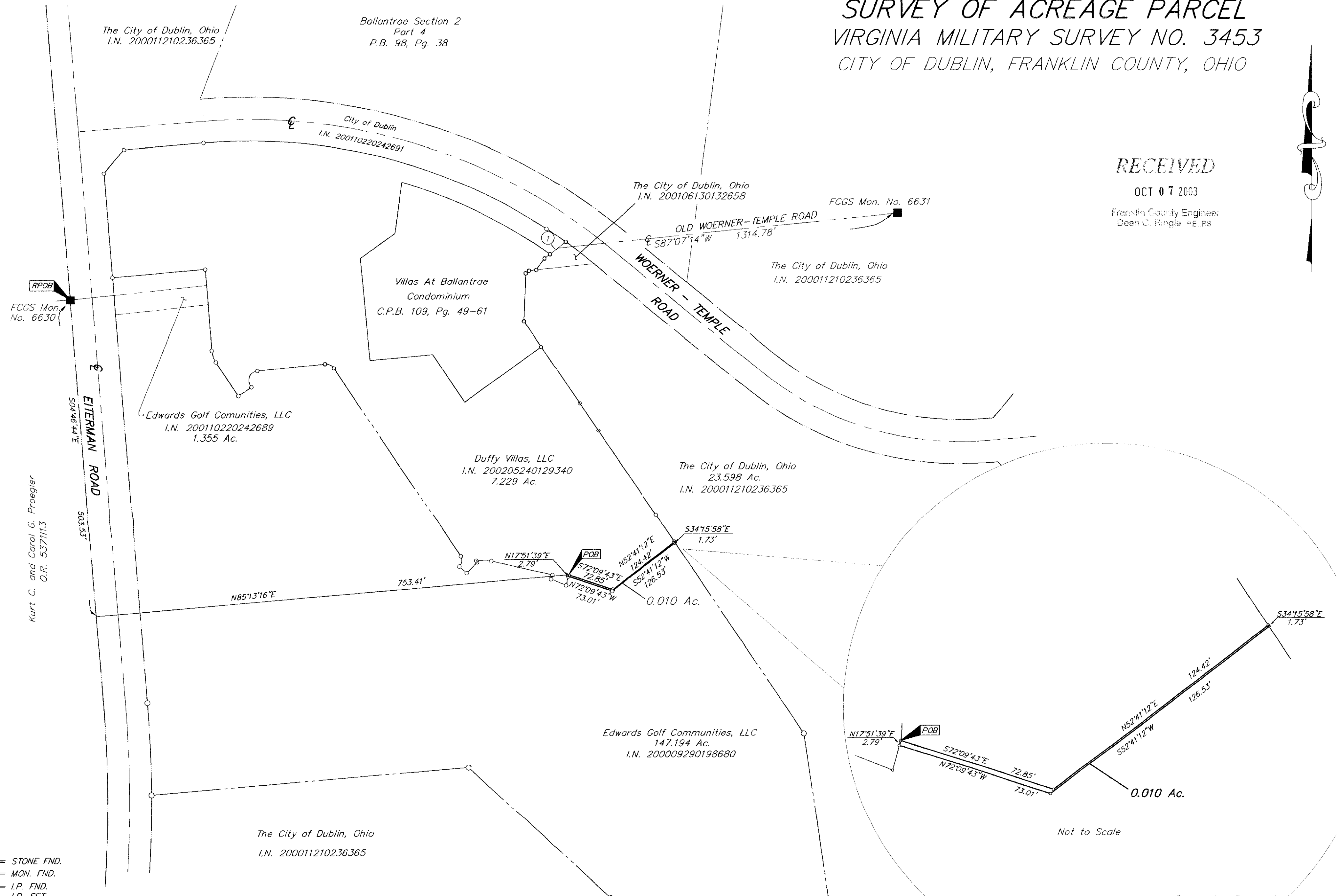


SURVEY OF ACREAGE PARCEL
VIRGINIA MILITARY SURVEY NO. 3453
CITY OF DUBLIN, FRANKLIN COUNTY, OHIO

RECEIVED

OCT 07 2003

Franklin County Engineer
 Dean C. Ringle P.E., P.S.



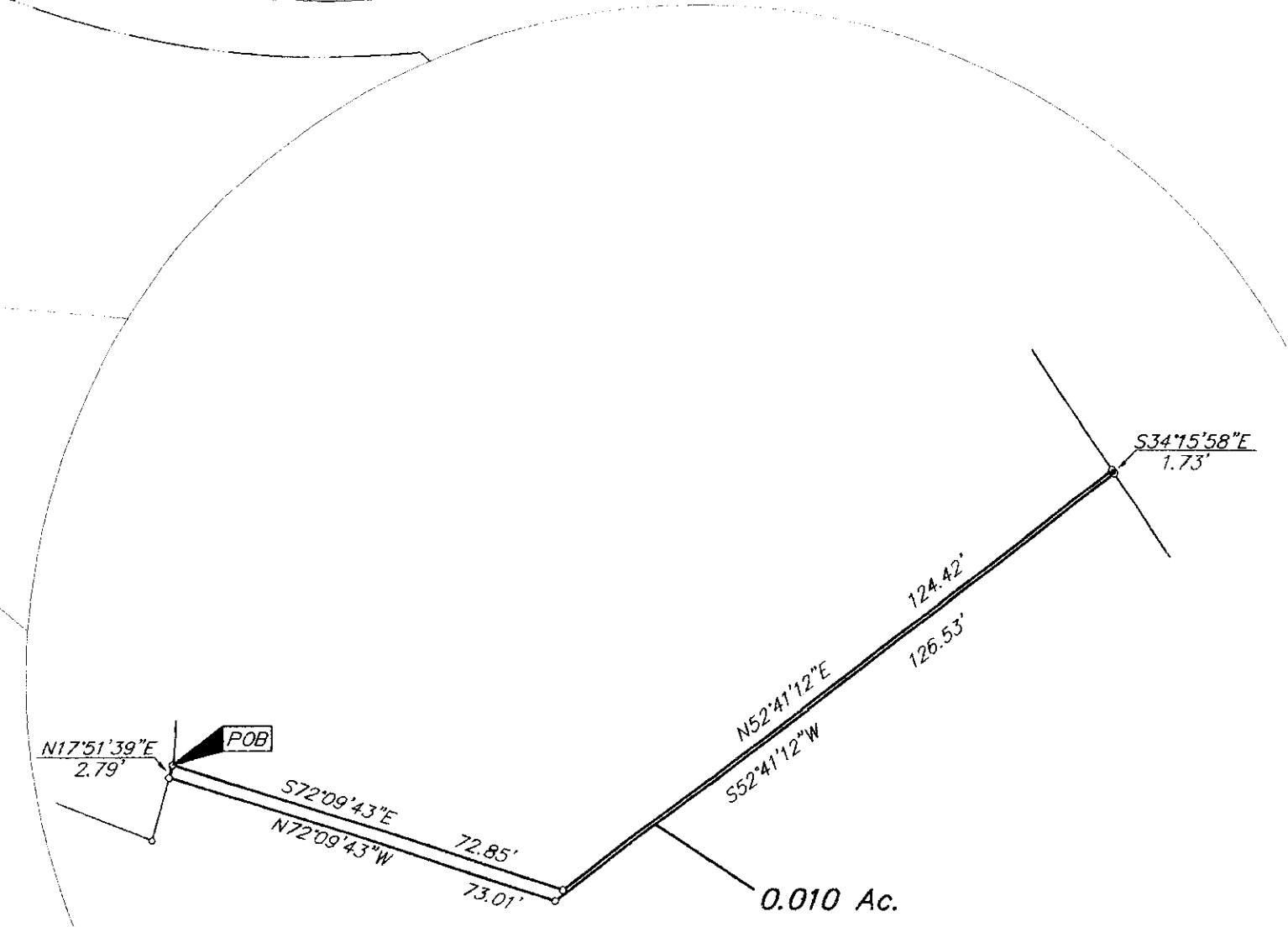
- = STONE FND.
- = MON. FND.
- = I.P. FND.
- = I.P. SET
- = MAG. NAIL FND.
- = MAG. NAIL SET
- ▲ = R.R. SPK. FND.
- △ = R.R. SPK. SET
- = P.K. NAIL FND.

I.P.S Set are 13/16" I.D. Iron pipe w/ cap inscribed EMHT INC



GRAPHIC SCALE (IN FEET)

BASIS OF BEARINGS: The bearings are based on the Ohio State Plane Coordinate System as per NAD 83. Control for bearings was from coordinates of Monuments 5536 and 7752, having a bearing of South 85° 44' 20" East, between Monuments established by the Franklin County Engineering Department, using Global Positioning System procedures and equipment.



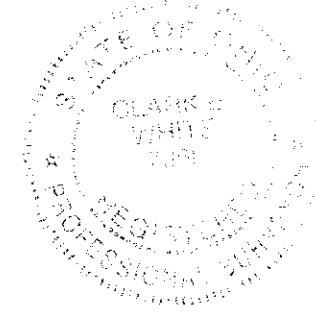
Not to Scale

Surveyed & Prepared By



ENGINEERS, SURVEYORS, PLANNERS, SCIENTISTS
 ANS. MECHWART HAMBLETON & TILTON, INC.
 01 WALL STREET, GAHANNA, OHIO 43230-3036
 TEL: 614-471-5150 • FAX: 614-471-9286

By *Chad E. Hill* 10/7/03
 Professional Surveyor No. 7868



SCALE: 1" = 100' OCTOBER 7, 2003