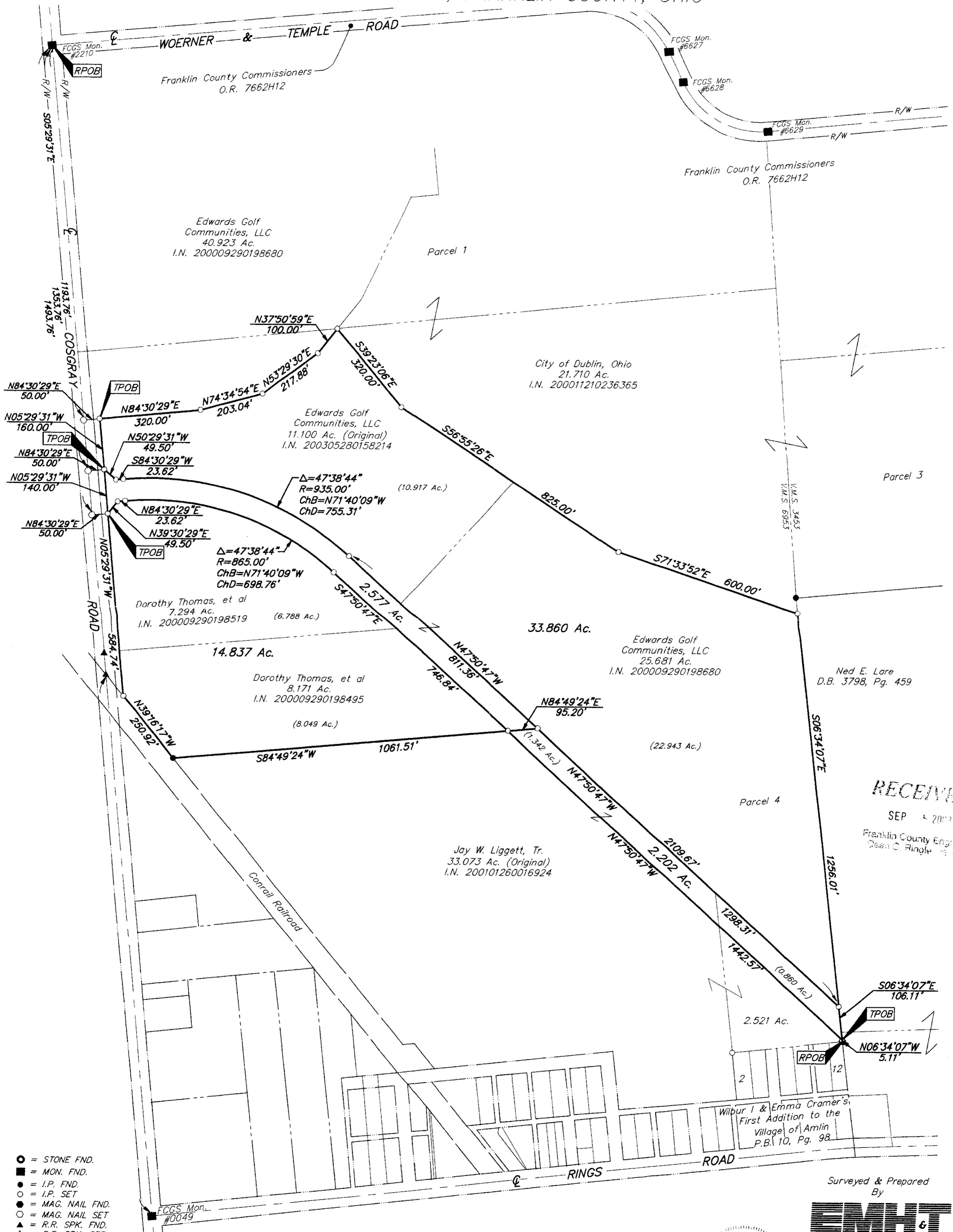


SURVEY OF ACREAGE PARCELS LOCATED IN VIRGINIA MILITARY SURVEY 6953 CITY OF DUBLIN, FRANKLIN COUNTY, OHIO



- = STONE FND.
- = MON. FND.
- = I.P. FND.
- = I.P. SET
- = MAG. NAIL FND.
- = MAG. NAIL SET
- ▲ = R.R. SPK. FND.
- △ = R.R. SPK. SET
- = P.K. NAIL FND.

I.P.S. Set are 13/16" I.D. Iron pipe w/ cap inscribed EMHT INC



GRAPHIC SCALE (IN FEET)

BASIS OF BEARINGS: Bearings are based on the Ohio State Plane Coordinate System as per NAD83. Control for bearings was from coordinates of monuments 5536 & 7752, having a bearing of South 85° 44' 20" East between monuments, established by the Franklin County Engineering Department, using Global Positioning System procedures and equipment.

RECEIVED
SEP 4 2003
Franklin County Engineer
Dean C. Ringle

SP117 77607575



Surveyed & Prepared By
EMHT & INC.
ENGINEERS, SURVEYORS, PLANNERS, SCIENTISTS
EVANS, MECHWART, HAMBLETON & TILTON, INC.
170 MILL STREET, GAHANNA, OHIO 43230-3036
TEL: 614-471-5150 • FAX: 614-471-9286

By *Clark E. White* 9/5/03
Professional Surveyor No. 7868

SCALE: 1" = 200' SEPTEMBER 04, 2003