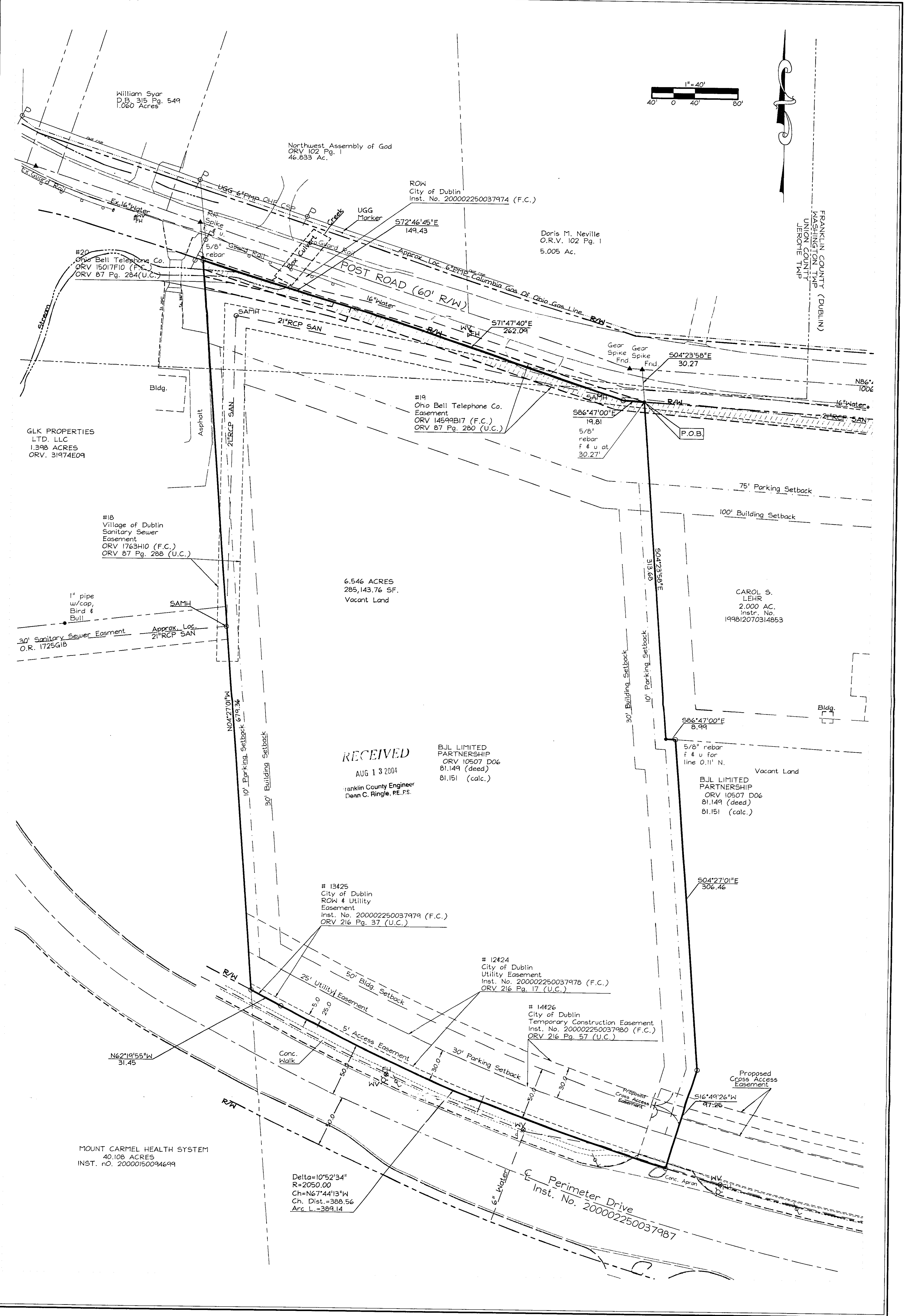
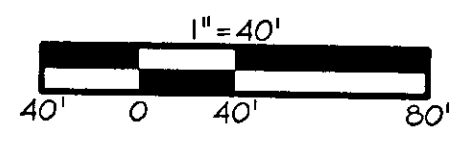


7810 7675
 5 0368 01
 0-109-C

EDG FILE NAME: S:\CANNON\220002250037987\210ALTO.DWG - Aug. 12, 2004 - 6:40 AM



RECEIVED
 AUG 13 2004
 Franklin County Engineer
 Dean C. Ringle, P.E., P.S.

SHEET:
 2 OF 2



**ALTA/ACSM SURVEY
 PERIMETER CENTER WEST PHASE III
 DUBLIN, OHIO**

SCALE:	1"=40'
ROLL NO.:	621001
FILE NAME:	6210ALTO
DRAWN BY:	MSB
CHECKED BY:	FHT
DATE ISSUED:	05-06-04
REVISED:	06-03-04
	08-12-04