

SURVEY OF ACREAGE PARCELS
 SECTION 31, TOWNSHIP 15, RANGE 20
 CONGRESS LANDS
 VILLAGE OF CANAL WINCHESTER, FRANKLIN COUNTY, OHIO

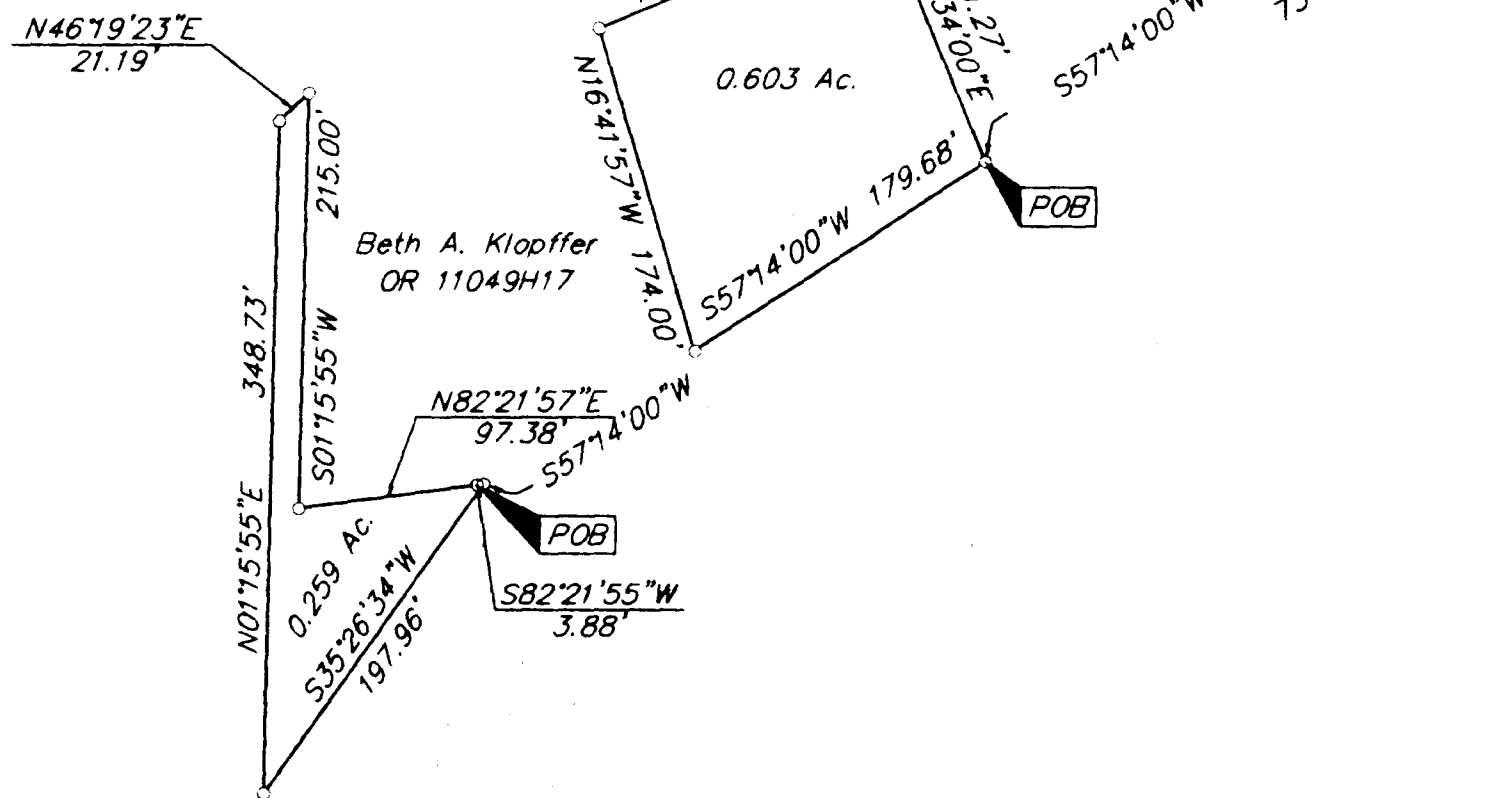


The Canal Winchester Local School District
 OR 16586H13

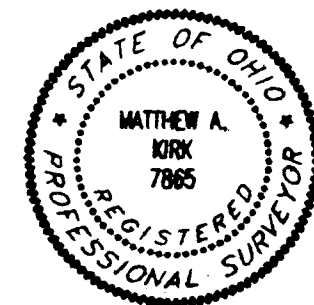
Eastside Properties
 Partnership
 OR 16629E03

John H. & Virginia
 Dietz
 D.B. 2031, Pg. 7

Eastside Properties
 Partnership
 OR 16629E03



GRAPHIC SCALE
 (IN FEET)



SURVEYED & PREPARED
 BY
EMT
 CONSULTING ENGINEERS & SURVEYORS
 170 MILL STREET
 GANAMA, OHIO 43230
 (614) 471-5150

By Matthew A. Kirk
 Professional Surveyor No. 7865

BASIS OF BEARINGS: The Bearings shown on this drawing are based on the same meridian as a portion of the centerline of Gender Road, having a bearing of N0°37'53"W, as shown on the recorded plat entitled "The Villages At Westchester Section 1, Phase 1, of record in Plat Book 75, Pages 28 and 29, Recorder's Office, Franklin County, Ohio