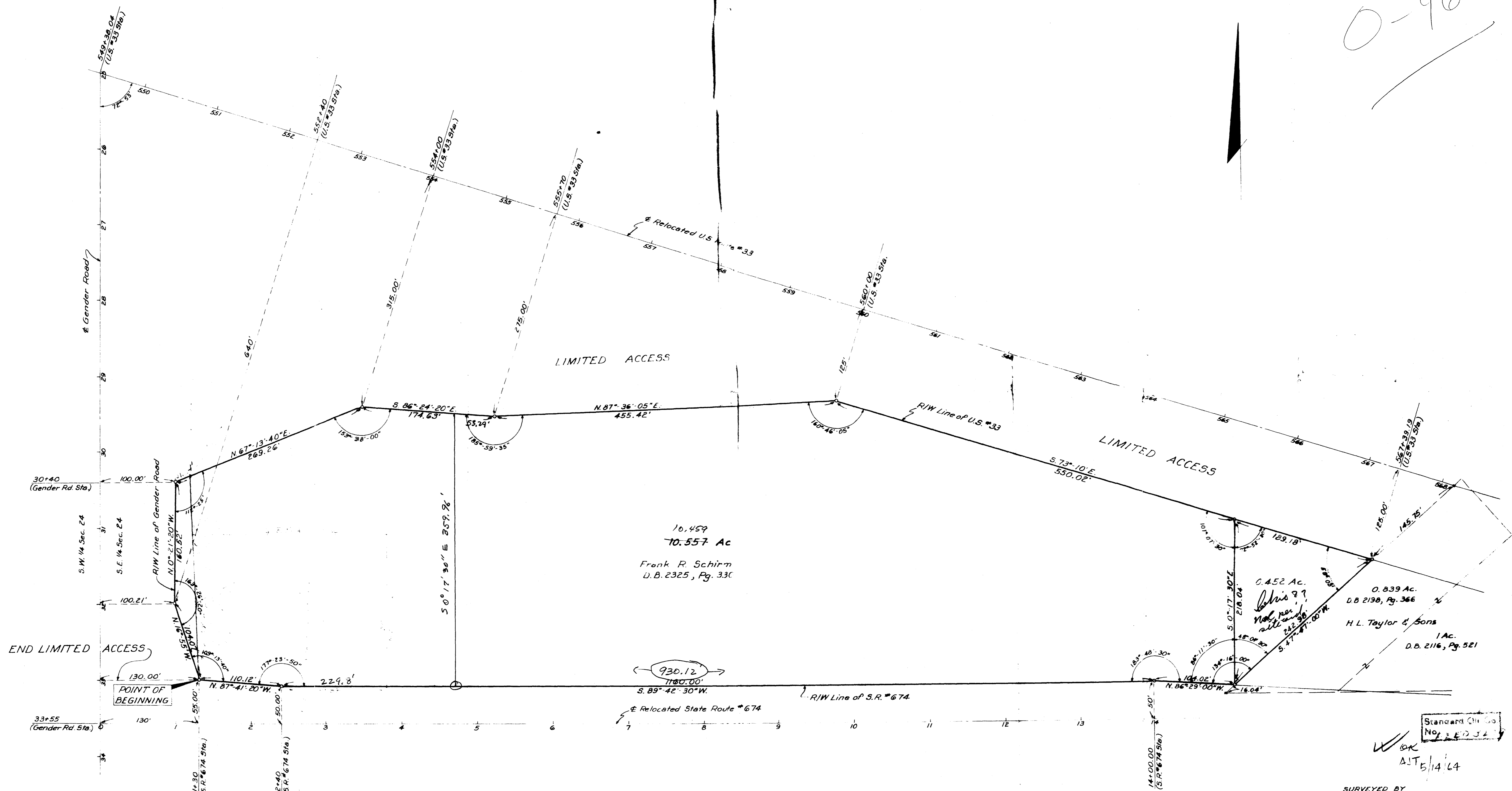


SURVEY OF 10.57 AC. TRACT

STANDARD L COMPANY

Located in the S.E. Quarter of Section 24, Twp. 11, Range 21
Madison Township, Franklin County, Ohio

0-46-C



10.459
10.557 Ac
Frank R. Schirm
D.B. 2325, Pg. 330

0.452 Ac.
D.B. 2138, Pg. 366
H.L. Taylor & Sons
1 Ac.
D.B. 2116, Pg. 521

Standard Oil Co.
No. 3 EDJL

OK
A/E 5/14/64

SURVEYED BY
EVANS, MECHWART, HAMBLETON & TILTON
CIVIL ENGINEERS & SURVEYORS
GAHANNA, OHIO
Scale: 1" = 60' ○ = Iron Pin

By *MECHWART*
Registered Surveyor #4072