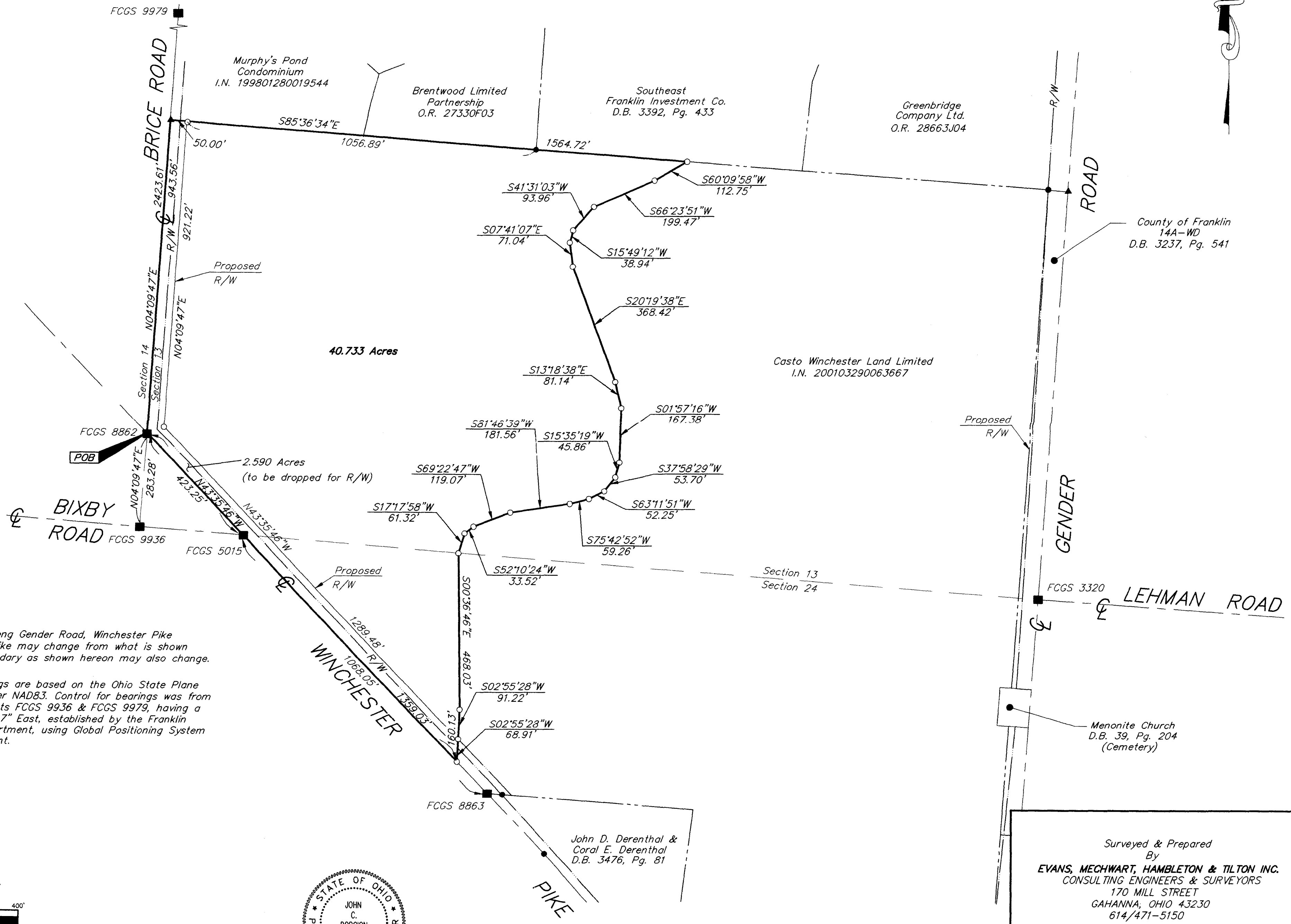


# SURVEY OF ACREAGE PARCEL

## SECTION 13 & 24, TOWNSHIP 11, RANGE 21

### CONGRESS LANDS

#### CITY OF COLUMBUS, FRANKLIN COUNTY, OHIO



Note: The right-of-way along Gender Road, Winchester Pike and Proposed Winchester Pike may change from what is shown hereon, therefore, the boundary as shown hereon may also change.

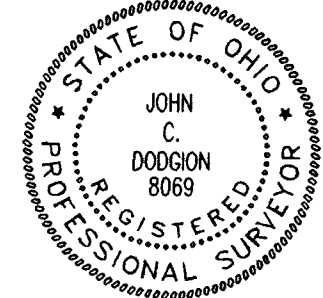
**BASIS OF BEARINGS:** Bearings are based on the Ohio State Plane Coordinate System as per NAD83. Control for bearings was from coordinates of monuments FCGS 9936 & FCGS 9979, having a bearing of North 04°09'47" East, established by the Franklin County Engineering Department, using Global Positioning System procedures and equipment.

- = MON. FND.
- = I.P. FND.
- = I.P. SET
- = MAG. NAIL FND.
- = MAG. NAIL SET
- ▲ = R.R. SPK. FND.
- △ = R.R. SPK. SET
- ◆ = P.K. NAIL FND.

I.P.S Set are 13/16" I.D. Iron pipe w/ cap inscribed EMH&T, Inc.



GRAPHIC SCALE (IN FEET)



By *John C. Dodgion*  
Professional Surveyor No. 8069

Surveyed & Prepared By  
**EVANS, MECHWART, HAMBLETON & TILTON INC.**  
CONSULTING ENGINEERS & SURVEYORS  
170 MILL STREET  
GAHANNA, OHIO 43230  
614/471-5150

SCALE: 1" = 200'      AUGUST 14, 2001  
REVISED      NOVEMBER 06, 2001

Q:\PROJECT\20010473\DWG\10473EX5.DWG - O XREFS: - PLOTTED BY NSTRENG - August 14, 2001 - 8:30 AM