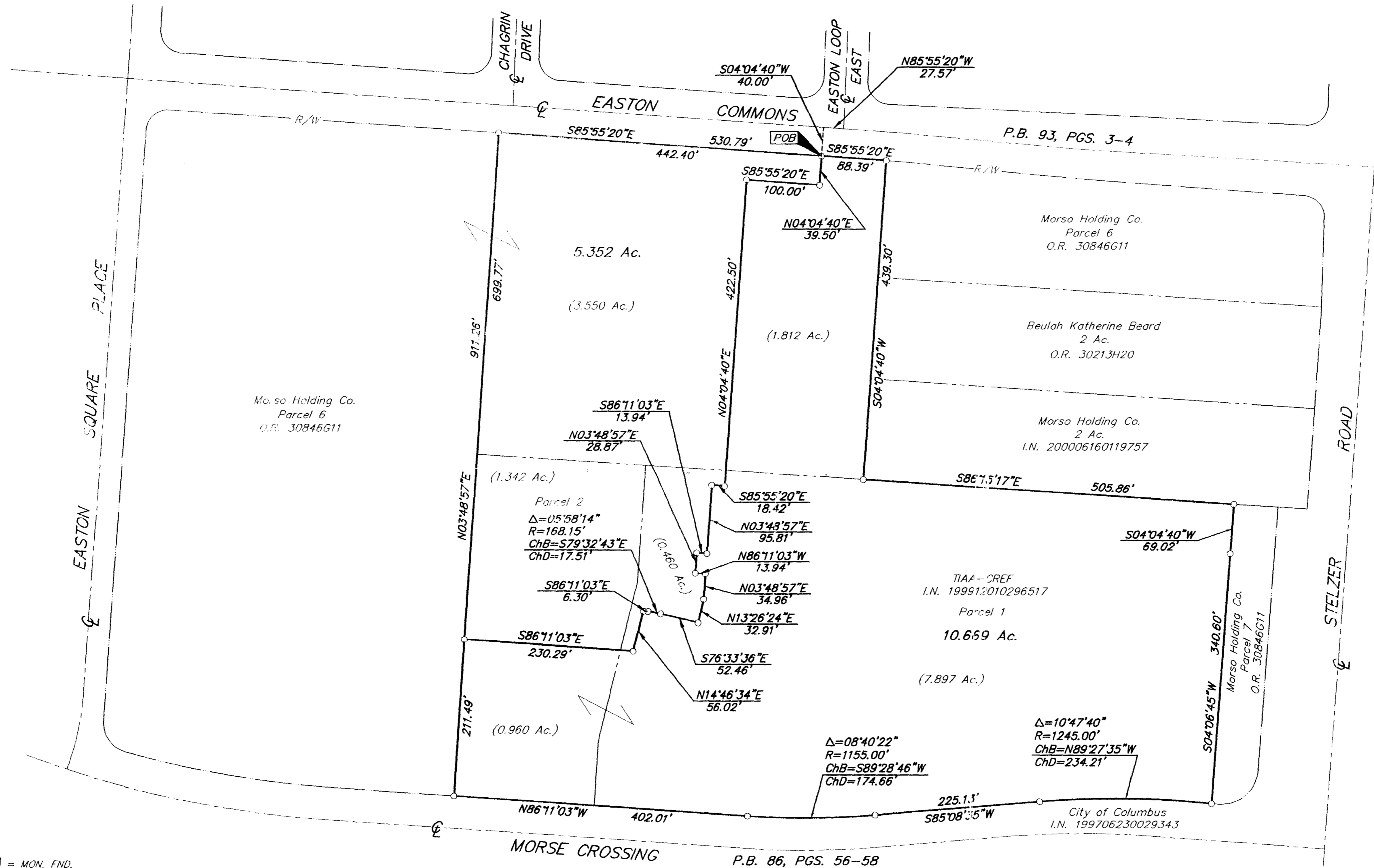
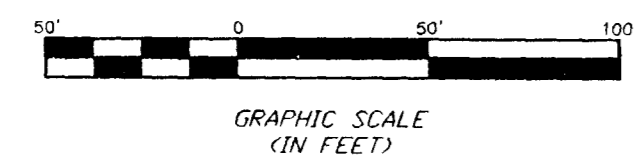


SURVEY OF ACREAGE PARCEL
 LOCATED IN
 QUARTER TOWNSHIP 2, TOWNSHIP 1, RANGE 17
 UNITED STATES MILITARY LANDS
 CITY OF COLUMBUS, FRANKLIN COUNTY, OHIO



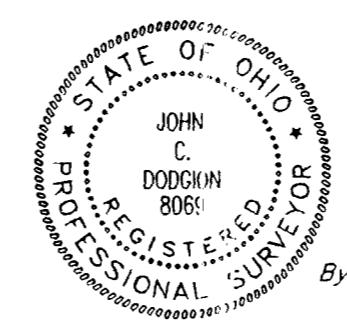
- = MON. FND.
- = I.P. FND.
- = I.P. SET
- = MAG. NAIL FND.
- = MAG. NAIL SET
- ▲ = R.R. SPK. FND.
- △ = R.R. SPK. SET
- = P.K. NAIL FND.

I.P.S. Set are 1 3/16" I.D. Iron pipe w/ cap inscribed EMH&T.



Bearings are based on the Ohio State Plan Coordinate System as per NAD83. Control for bearings was from coordinates of monument FRANK 64 & FRANK 164, determining a portion of the centerline of MORSE ROAD as S 86°15'51" E.

P.B. 86, PGS. 56-58
 P.B. 79, PG. 78



By *John C. Dodgson* 11/27/00
 Professional Surveyor No. 8069

Surveyed & Prepared By
EVANS, MECHWART, HAMLETON & TILTON INC.
 CONSULTING ENGINEERS & SURVEYORS
 170 MILL STREET
 GAHANNA, OHIO 43230
 614/471-5150

SCALE: 1" = 100' NOVEMBER 27, 2000

Q:\PROJECT\20000425.01\DWG\00425BVT.DWG - 0.XREFS - PLOTTED BY JBUSHBY - November 27, 2000 - 11:11 AM