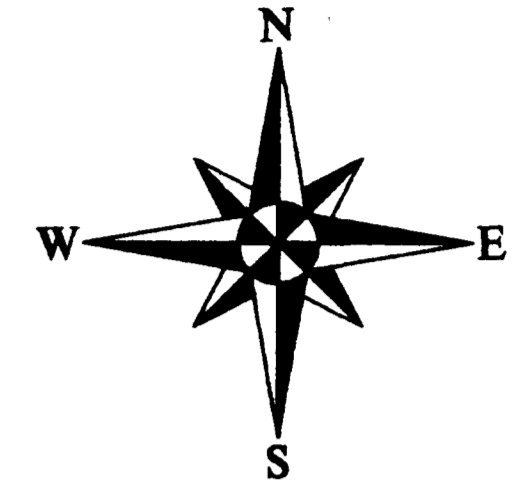
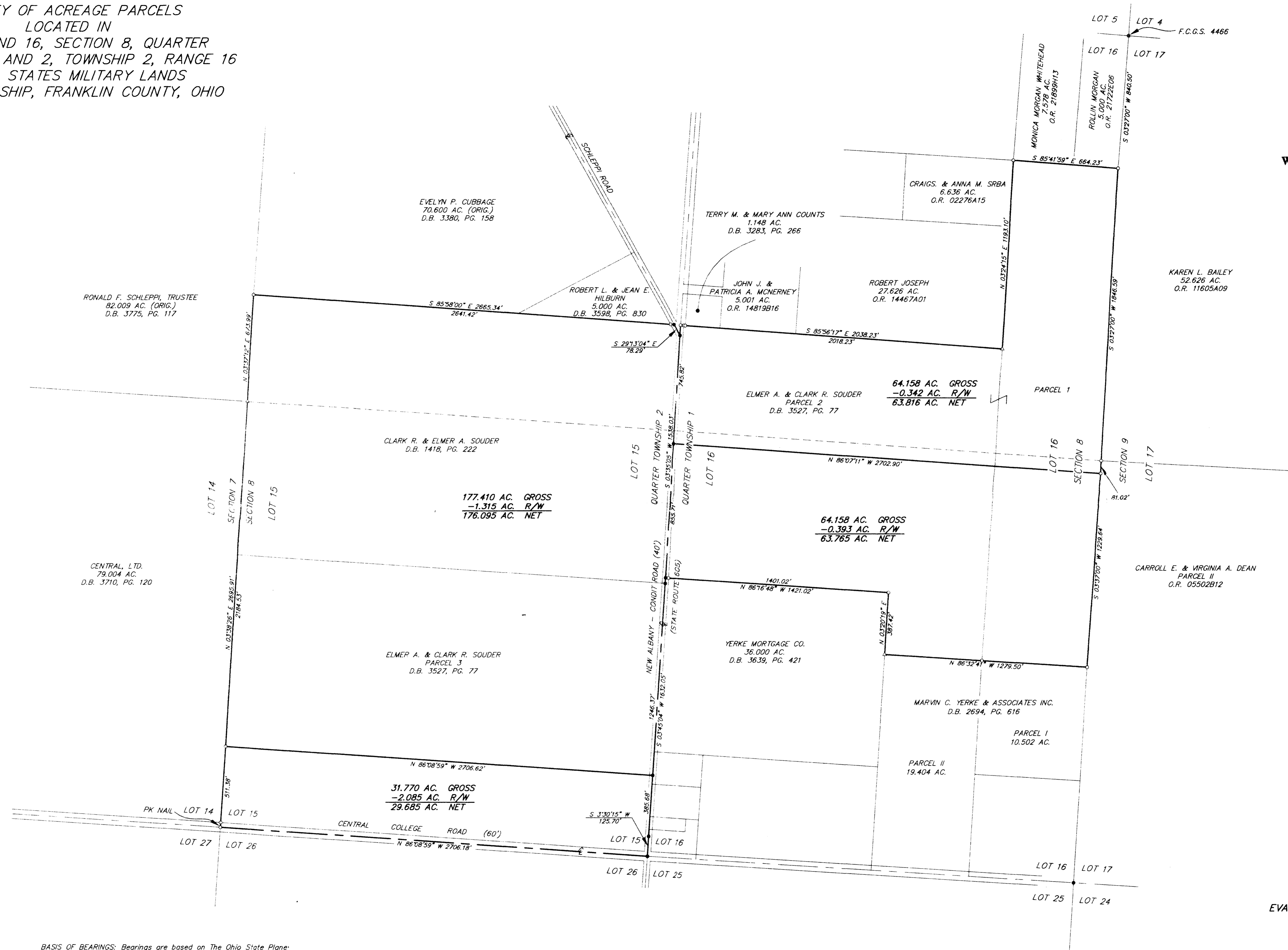
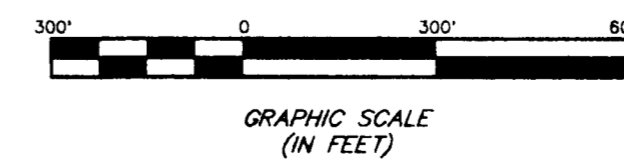


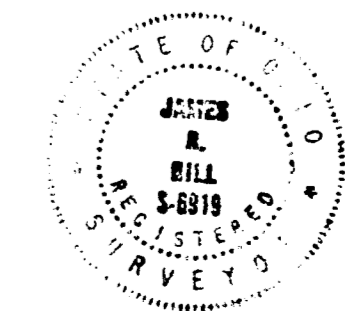
SURVEY OF ACREAGE PARCELS
 LOCATED IN
 LOT 15 AND 16, SECTION 8, QUARTER
 TOWNSHIPS 1 AND 2, TOWNSHIP 2, RANGE 16
 UNITED STATES MILITARY LANDS
 PLAIN TOWNSHIP, FRANKLIN COUNTY, OHIO



BASIS OF BEARINGS: Bearings are based on The Ohio State Plane Coordinate System as per NAD83. Control for bearings was from coordinates of monuments Frank 80 & 180 established by the Franklin County Engineering Department, using Global Positioning System procedures and equipment.



- IRON PIN
- R.R.S.
- CORNER STONE



Surveyed & Platted
 By
EVANS, MECHWART, HAMBLETON & TILTON, INC.
 CONSULTING ENGINEERS & SURVEYORS
 170 MILL STREET
 GAHANNA, OHIO 43230
 614/471-5150

SCALE: 1" = 300' SEPTEMBER 20, 1995
 REVISED OCTOBER 5, 1995

BY James R. Liel
 PROFESSIONAL SURVEYOR NO. 6919