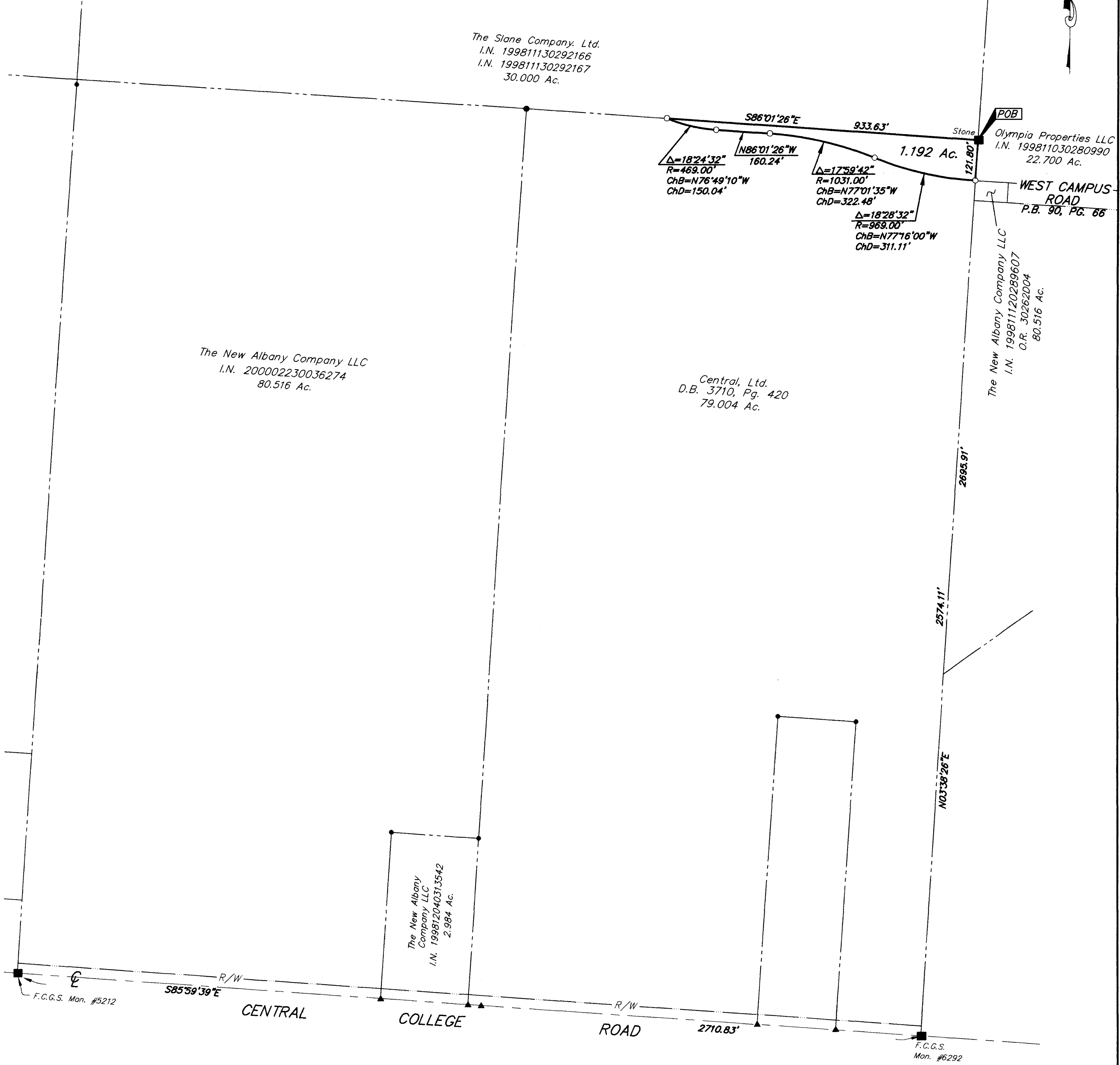


**SURVEY OF ACREAGE PARCEL**  
**SECTION 7, QUARTER TOWNSHIP 2,**  
**TOWNSHIP 2, RANGE 16**  
**UNITED STATES MILITARY LANDS**  
**CITY OF COLUMBUS, FRANKLIN COUNTY, OHIO**



The Slane Company Ltd.  
 I.N. 199811130292166  
 I.N. 199811130292167  
 30.000 Ac.

The New Albany Company LLC  
 I.N. 200002230036274  
 80.516 Ac.

Central, Ltd.  
 D.B. 3710, Pg. 420  
 79.004 Ac.

POB  
 Olympia Properties LLC  
 I.N. 199811030280990  
 22.700 Ac.

WEST CAMPUS ROAD  
 P.B. 90, Pg. 66

The New Albany Company LLC  
 I.N. 199811120289607  
 O.R. 30262004  
 80.516 Ac.

The New Albany Company LLC  
 I.N. 199812040313542  
 2.984 Ac.

CENTRAL COLLEGE ROAD

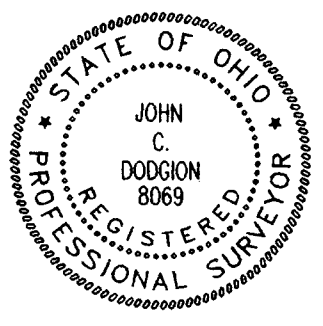
ROAD

F.C.G.S. Mon. #6292

- = MON. FND.
- = I.P. FND.
- = I.P. SET
- = MAG. NAIL FND.
- = MAG. NAIL SET
- ▲ = R.R. SPK. FND.
- △ = R.R. SPK. SET
- = P.K. NAIL FND.

I.P.S. Set are 13/16" I.D. Iron pipe W/ cap inscribed EMH&T, Inc.

BASIS OF BEARINGS : Bearings are based on The Ohio State Plane Coordinate System as per NAD83. Control for bearings was from coordinates of Franklin County Geodetic Survey Monument Nos. 5574 and 5113, as established by the Franklin County Engineering Department.



Surveyed & Prepared By  
**EVANS, MECHWART, HAMBLETON & TILTON INC.**  
 CONSULTING ENGINEERS & SURVEYORS  
 170 MILL STREET  
 GAHANNA, OHIO 43230  
 614/471-5150

SCALE: 1" = 200'  
 REVISED

DECEMBER 4, 2001  
 DECEMBER 12, 2001

By *John C. Dodgion*  
 Professional Surveyor No. 8069

