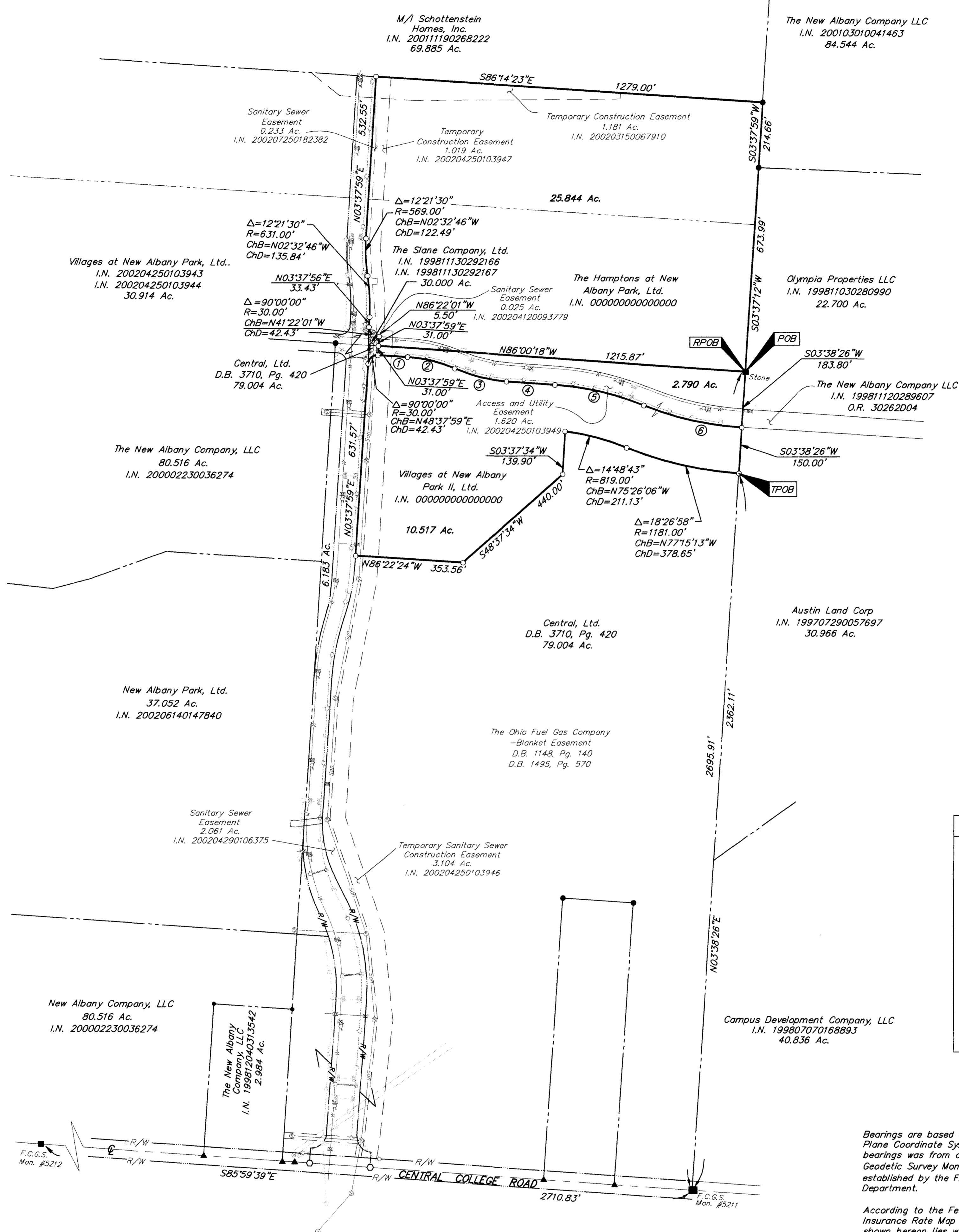


**SURVEY OF ACREAGE PARCEL  
SECTION 7, QUARTER TOWNSHIP 2,  
TOWNSHIP 2, RANGE 16  
UNITED STATES MILITARY LANDS  
CITY OF COLUMBUS, FRANKLIN COUNTY, OHIO**



- ① S86°22'01"E  
97.44'
- ② Δ=19°36'25"  
R=469.00'  
ChB=576°33'49"E  
ChD=159.71'
- ③ Δ=19°15'50"  
R=531.00'  
ChB=N76°23'31"W  
ChD=177.69'
- ④ N86°01'26"W  
160.24'
- ⑤ Δ=17°59'42"  
R=969.00'  
ChB=N77°01'35"W  
ChD=303.09'
- ⑥ Δ=18°28'00"  
R=1031.00'  
ChB=N77°15'44"W  
ChD=330.86'

LEGEND	
■	= Curb Inlet
⊙	= Gas Meter
⊕	= Power Pole
⊗	= Water Meter
⊛	= Light pole
⊞	= Electric Pull Box
⊟	= Water Valve
⊠	= Fire Hydrant
⊡	= Storm Manhole
⊢	= Sanitary Manhole
—V—	= Water Line
—G—	= Gas Line
—STM—	= Storm Line
—SAN—	= Sanitary Line
—C—	= Centerline
—R/W—	= Right of Way Line

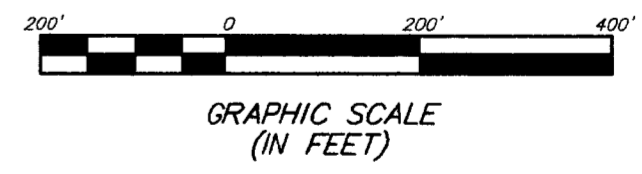
Bearings are based on The Ohio State Plane Coordinate System as per NAD83. Control for bearings was from coordinates of Franklin County Geodetic Survey Monument Nos. 5574 and 5113, as established by the Franklin County Engineering Department.

According to the Federal Emergency Management Agency's Flood Insurance Rate Map (dated August 2, 1995), the subject parcel shown hereon lies within Zone X (areas determined to be outside 500-year flood plain), Community Panel No. 39049C0180 G.

Note:  
The zoning at the date the survey was prepared is NC.

- = MON. FND.
- = I.P. FND.
- = I.P. SET
- = MAG. NAIL FND.
- = MAG. NAIL SET
- ▲ = R.R. SPK. FND.
- △ = R.R. SPK. SET
- = P.K. NAIL FND.

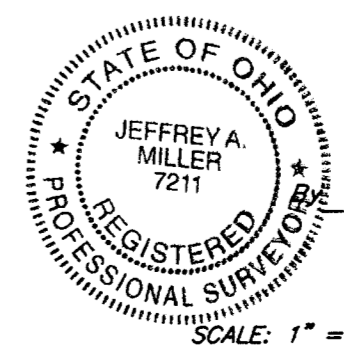
I.P.S. Set are 1 3/16" I.D. Iron pipe W/ cap inscribed EMHT INC



CERTIFICATION: (Commitment No. 00061180)  
To: The Hamptons at New Albany Park, Ltd., Villages at New Albany Park II, Ltd., Lifestyle Residential Holdings, Ltd., The Stone Company, Central Ltd., Chicago Title Insurance Company, Connor Land Title Agency, Ltd., and Huntington National Bank

This is to certify that this map or plat and the survey on which it is based were made in accordance with "Minimum Standard Detail Requirements for ALTA/ACSM Land Title Surveys," jointly established and adopted by ALTA, ACSM and NSPS in 1999, and included items 1, 3, 4 and 13 of Table A thereof. Pursuant to the Accuracy Standards as adopted by ALTA, NSPS, and ACSM and in effect on the date of this certification, undersigned further certifies that: proper field procedures, instrumentation, and adequate survey personnel were employed in order to achieve results comparable to those outlined in the "Minimum Angle, Distance, and Closure Requirements for Survey Measurements Which Control Land Boundaries for ALTA/ACSM Land Title Surveys."

SURVEYED & PREPARED  
BY  
**EMHT**  
CONSULTING ENGINEERS & SURVEYORS  
170 MILL STREET  
GAHANNA, OHIO 43230  
(614) 471-5150



November 6, 2002

SCALE: 1" = 200'