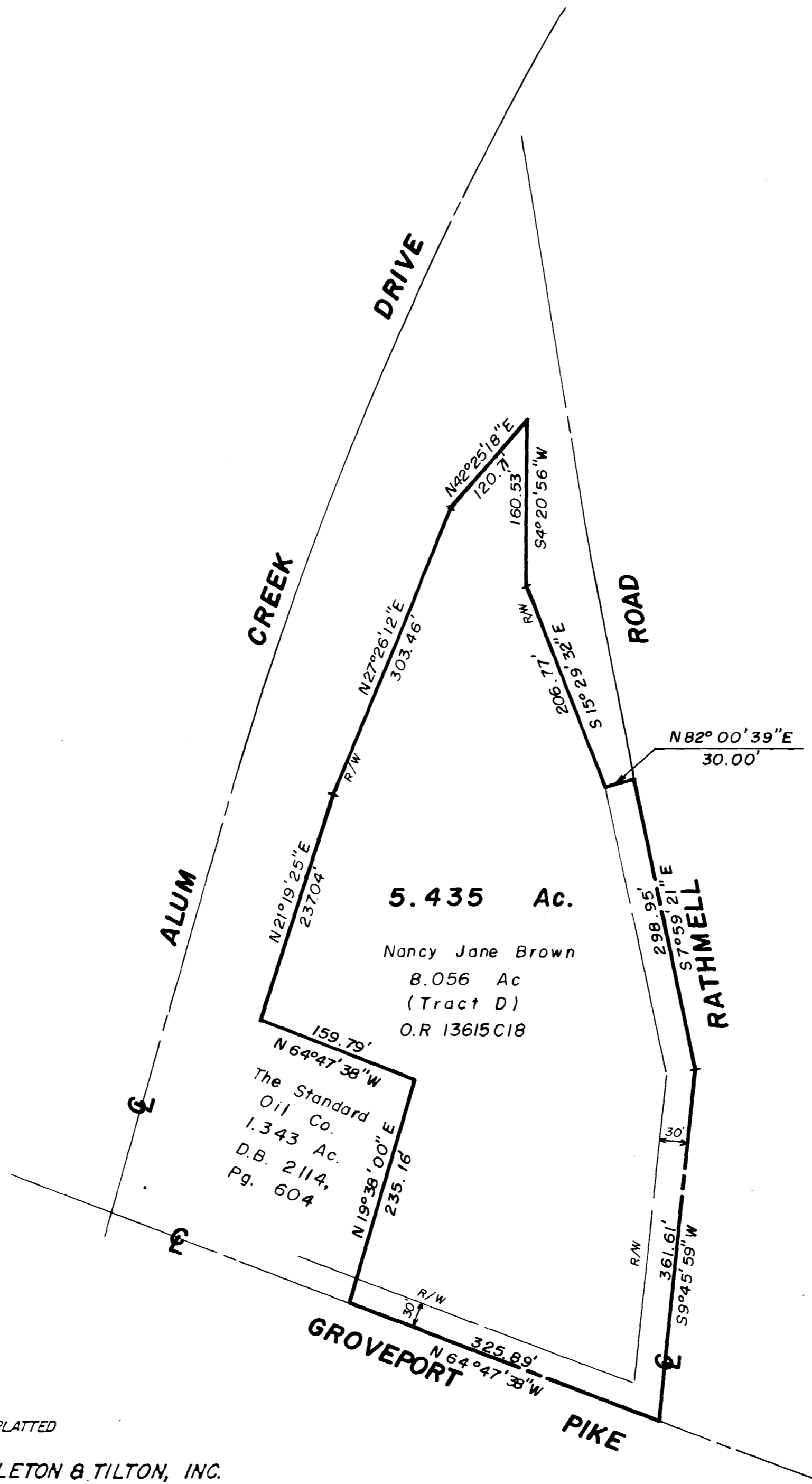
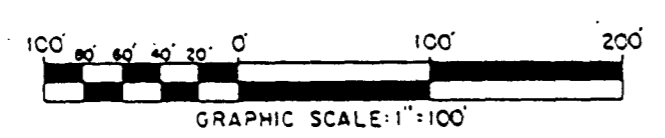


SURVEY OF ACREAGE PARCELS
 Located In Section 24, Township 4, Range 22,
 Congress Lands
 Village Of Obetz, Franklin County, Ohio



SURVEYED & PLATTED
 BY
EVANS, MECHWART, HAMBLETON & TILTON, INC.
 CONSULTING ENGINEERS & SURVEYORS
 170 MILL STREET GAHANNA, OHIO 43230
 PHONE (614) 471-5150

By Thomas D. Sittler
 Registered Surveyor No. 5508
 SCALE: 1" = 100' SEPTEMBER 7, 1989



NOTE :
 The bearings shown hereon are based
 on the same meridian as bearings
 on ODOT plans for I - 270.