

BOUNDARY & TOPOGRAPHIC SURVEY
OF ACREAGE PARCEL
QTR TWP 3, TWP 2, RNG 16, U.S.M.L.
CITY OF COLUMBUS, FRANKLIN COUNTY, OHIO

SURVEYED & PLATTED
BY
EVANS, MECHWART, HAMBLETON & TILTON, INC.
CONSULTING ENGINEERS & SURVEYORS
170 MILL STREET
GAHANNA, OHIO 43230
(614) 471-5150

By *[Signature]*
Professional Surveyor No. 7211

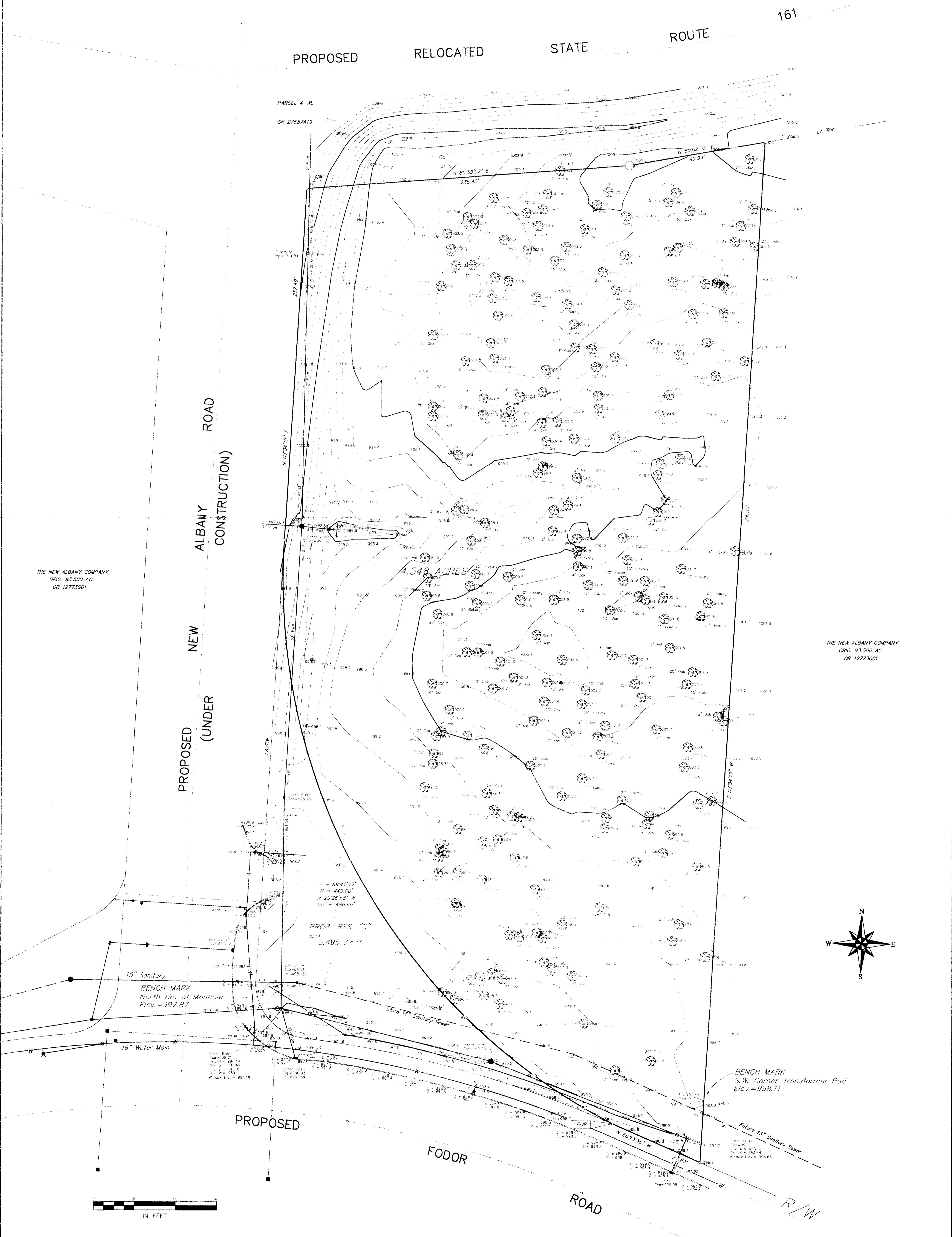
SCALE: 1" = 40'

RON PIN
OCTOBER 6, 1995

- ▲ = R.R. SPK. FND.
 - △ = R.R. SPK. SET
 - = I.P. FND.
 - = I.P. SET
- I.P.S. Set are 3/4" O.D. Iron pipe w/ cap inscribed EMH&T.



The Basis of Bearing on this drawing was transferred from a GPS survey of Franklin County monuments FRANK 78 and FRANK 178 performed by the Franklin County Engineer's Office in 1993 based on the NAD 83 Ohio State Plane Coordinate System, South Zone, and determines the centerline of PROPOSED New Albany Road as being N 334.10° E



THE NEW ALBANY COMPANY
ORIG. 93.500 AC.
OR 12773G01

THE NEW ALBANY COMPANY
ORIG. 93.500 AC.
OR 12773G01

L = 6947.55'
R = 445.00'
H = 2926.58' H
Ch = 486.60'
PROP. RES. "C"
0.495 AC.

15" Sanitary
BENCH MARK
North rim of Manhole
Elev. = 997.87

BENCH MARK
S.W. Corner Transformer Pad
Elev. = 998.11

