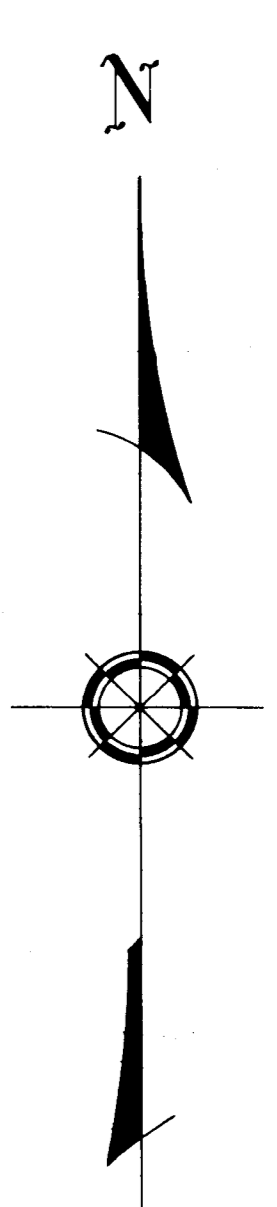
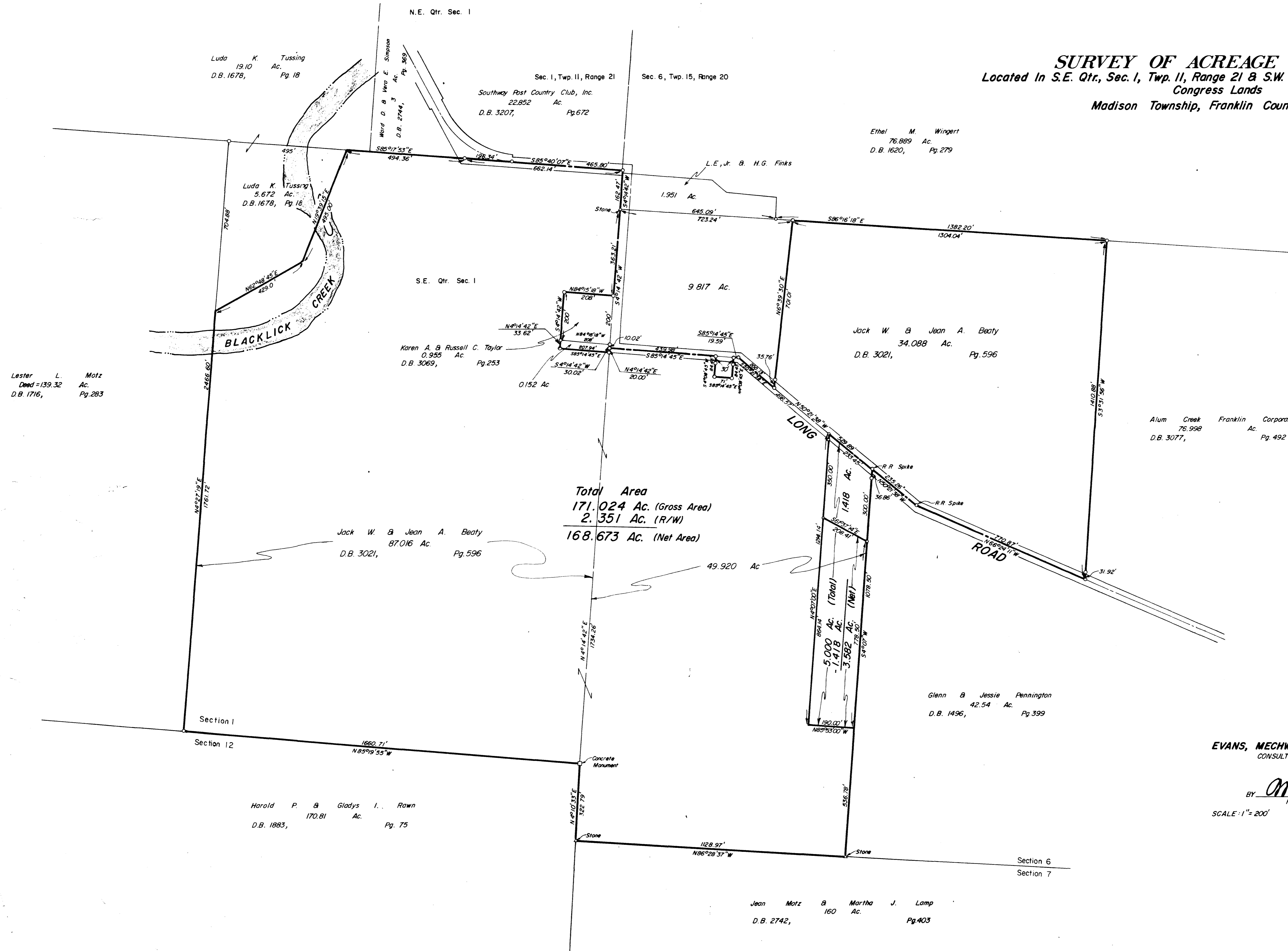


**SURVEY OF ACREAGE PARCELS**  
 Located In S.E. Qtr., Sec. 1, Twp. 11, Range 21 & S.W. Qtr., Sec. 6, Twp. 15, Range 20  
 Congress Lands  
 Madison Township, Franklin County, Ohio



SURVEYED & PLATTED  
 BY  
**EVANS, MECHWART, HAMBLETON & TILTON, INC.**  
 CONSULTING ENGINEERS AND SURVEYORS  
 GAHANNA, OHIO

BY *M. S. Machwart*  
 Registered Surveyor No. 4072

SCALE: 1" = 200'

MARCH 6, 1973  
 REVISED MAY 19, 1978

O = IRON PIN