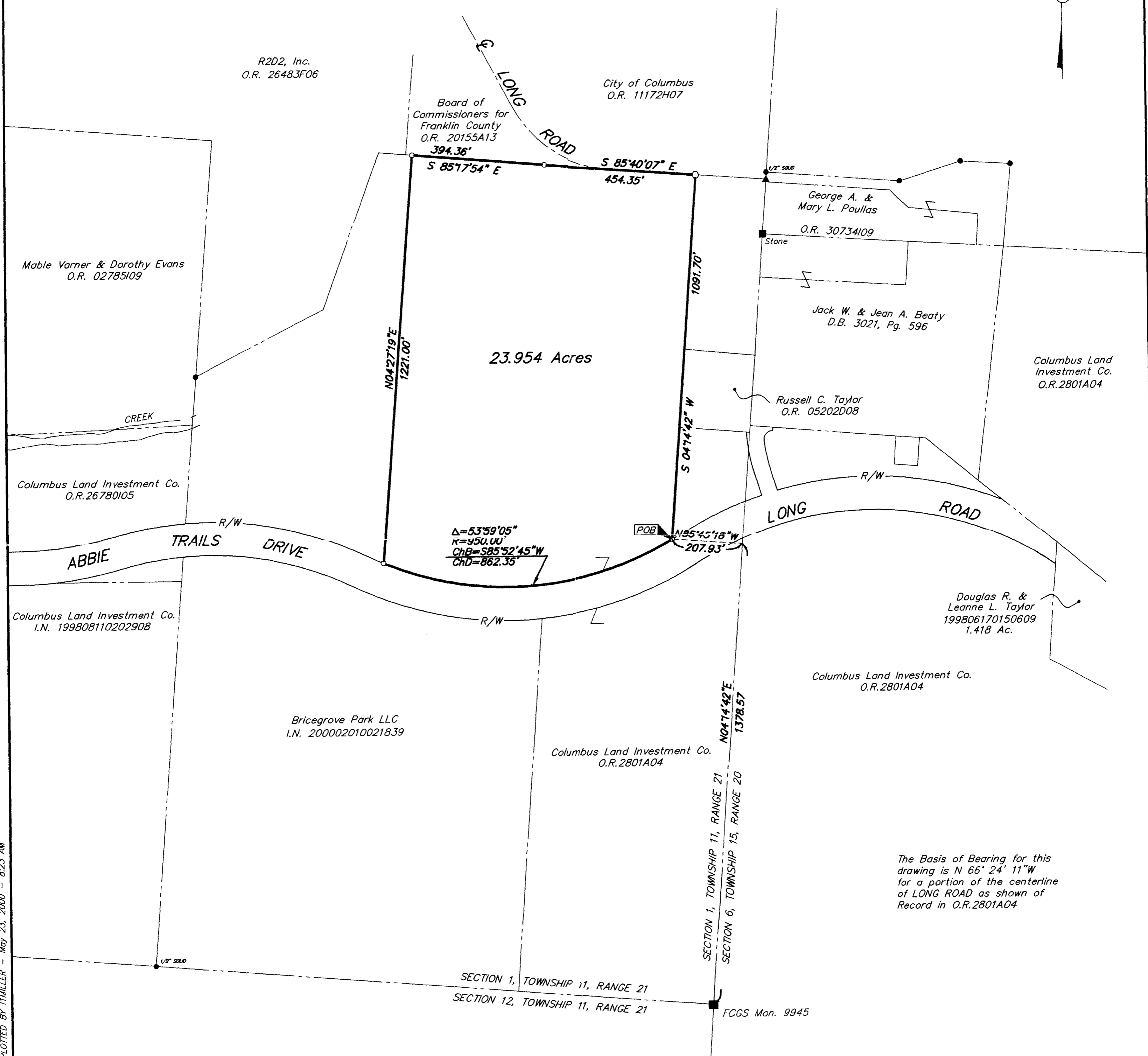


SURVEY OF ACREAGE PARCEL
 Located In
 Section 1, Township 11, Range 21
 Congress Lands
 City of Columbus, Franklin County, Ohio



SECTION 1, TOWNSHIP 11, RANGE 21
 SECTION 12, TOWNSHIP 11, RANGE 21

The Basis of Bearing for this drawing is N 66° 24' 11" W for a portion of the centerline of LONG ROAD as shown of Record in O.R.2801A04

- = MON. FND.
- = I.P. FND.
- = I.P. SET
- = MAG. NAIL FND.
- = MAG. NAIL SET
- ▲ = R.R. SPK. FND.
- △ = R.R. SPK. SET
- ◆ = P.K. NAIL FND.

I.P.S Set are 13/16" I.D. Iron pipe W/ cap inscribed EMH&T.



GRAPHIC SCALE (IN FEET)



By *Jeffrey A. Miller* 5-23-00
 Professional Surveyor No. 7211

Surveyed & Prepared By
EVANS, MECHWART, HAMBLETON & TILTON INC.
 CONSULTING ENGINEERS & SURVEYORS
 170 MILL STREET
 GAHANNA, OHIO 43230
 614/471-5150

SCALE: 1" = 200' DATE MAY 22, 2000

G:\PROJECT\20000738\DWG\00738bvt.dwg - 0 XREFS: - PLOTTED BY 11MILLER - May 23, 2000 - 8:23 AM