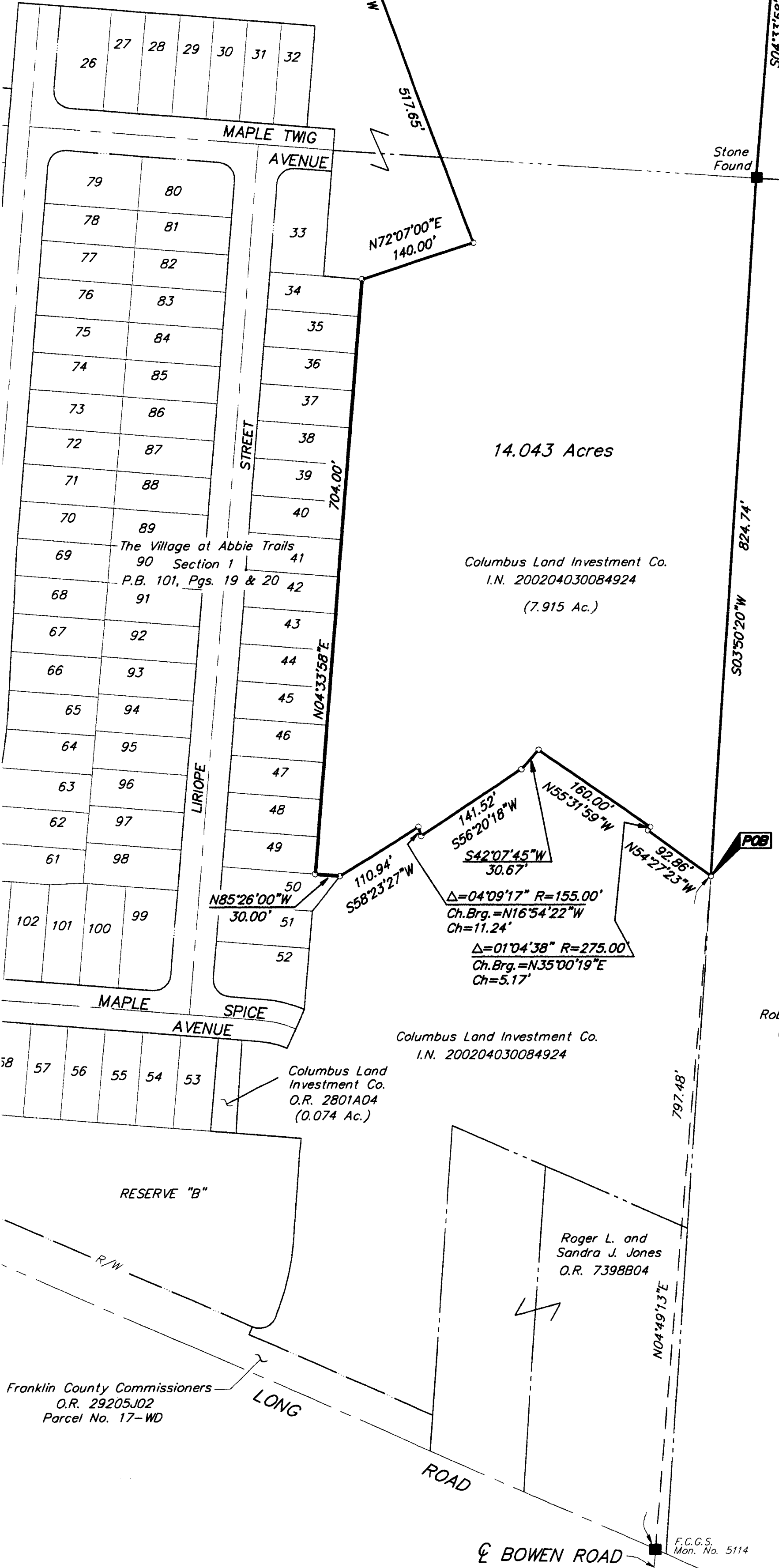


SURVEY OF ACREAGE PARCEL
SECTION 6, TOWNSHIP 15, RANGE 20
CONGRESS LANDS
CITY OF COLUMBUS, FRANKLIN COUNTY, OHIO

Crossmann Communities of Ohio, Inc.
 I.N. 200204150094531

Columbus Land Investment Co.
 I.N. 200112180294802
 (6.128 Ac.)

Carl E. Smith and
 Back 80, Ltd.
 O.R. 33972B06



14.043 Acres

Columbus Land Investment Co.
 I.N. 200204030084924
 (7.915 Ac.)

Columbus Land Investment Co.
 I.N. 200204030084924
 O.R. 2801A04
 (0.074 Ac.)

Robert J. Weiler, Jr.
 O.R. 21628H13

Roger L. and
 Sandra J. Jones
 O.R. 7398B04

Franklin County Commissioners
 O.R. 29205J02
 Parcel No. 17-WD

The basis of bearings for this drawing is N 66°24'11" W for a portion of the centerline of Long Road as shown of record in O.R. 2801A04.

- = MON. FND.
 - = I.P. FND.
 - = I.P. SET
 - = MAG. NAIL FND.
 - = MAG. NAIL SET
 - ▲ = R.R. SPK. FND.
 - △ = R.R. SPK. SET
 - ◆ = P.K. NAIL FND.
- I.P.S. Set are 13/16" I.D. Iron pipe W/ cap inscribed EMHT INC



GRAPHIC SCALE
 (IN FEET)



By Matthew A. Kirk 7/2/03
 Professional Surveyor No. 7865

SCALE: 1" = 100' JANUARY 7, 2003

O:\PROJECT\20021465\DWG\21465Bv2.DWG - O XREFS: - PLOTTED BY DGOODMAN - January 07, 2003 - 11:54 AM