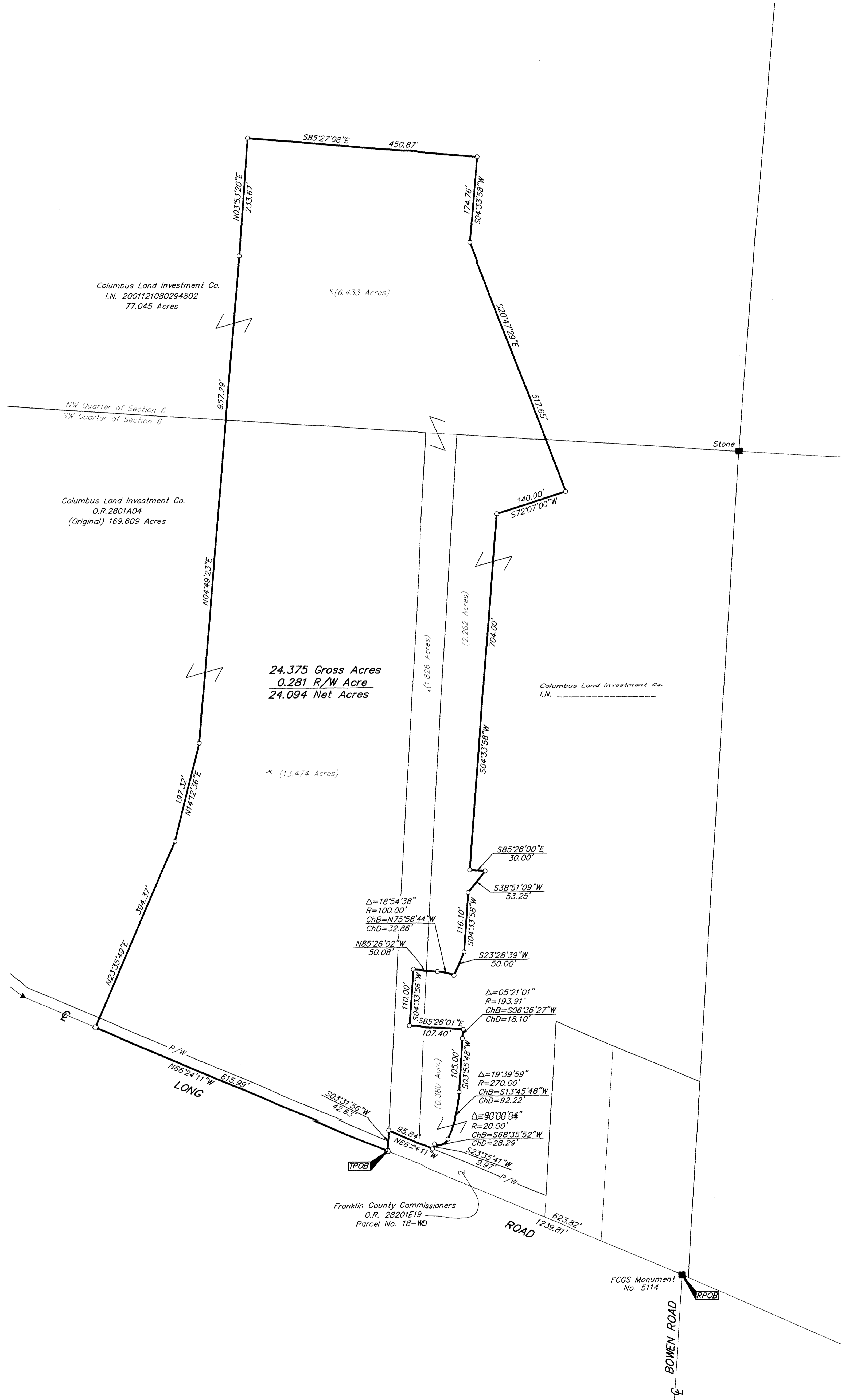
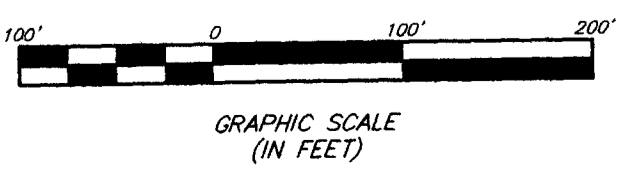


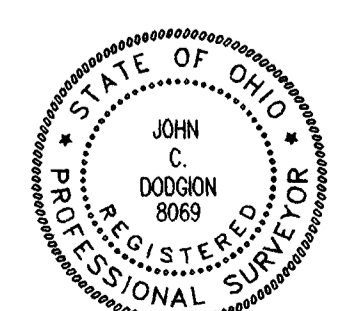
SURVEY OF ACREAGE PARCEL
SECTION 6, TOWNSHIP 15, RANGE 20
CONGRESS LANDS
CITY OF COLUMBUS, FRANKLIN COUNTY, OHIO



- = MON. FND.
 - = I.P. FND.
 - = I.P. SET
 - = MAG. NAIL FND.
 - = MAG. NAIL SET
 - ▲ = R.R. SPK. FND.
 - ▲ = R.R. SPK. SET
 - = P.K. NAIL FND.
- I.P.S. Set are 1 3/16" I.D. Iron pipe w/ cap inscribed EMHT INC



The Basis of Bearing for this drawing is N 66°24'11" W for a portion of the centerline of Long Road as shown of record in O.R. 2801A04.



SURVEYED & PREPARED BY
EMHT
 CONSULTING ENGINEERS & SURVEYORS
 170 MILL STREET
 GAHANNA, OHIO 43230
 (614) 471-5150

By John C. Dookin
 Professional Surveyor No. 8069

SCALE: 1" = 100' MARCH 18, 2002

Q:\PROJECT\2002049.01\DWG\2002049.DWG - 0 XREFS - PLOTTED BY JUBUSBY - March 13, 2002 - 10:29 AM